



# SZABO SCANDIC

Part of Europa Biosite

## Produktinformation



Forschungsprodukte & Biochemikalien



Zellkultur & Verbrauchsmaterial



Diagnostik & molekulare Diagnostik



Laborgeräte & Service

Weitere Information auf den folgenden Seiten!  
See the following pages for more information!



### Lieferung & Zahlungsart

siehe unsere [Liefer- und Versandbedingungen](#)

### Zuschläge

- Mindermengenzuschlag
- Trockeneiszuschlag
- Gefahrgutzuschlag
- Expressversand

### SZABO-SCANDIC HandelsgmbH

Quellenstraße 110, A-1100 Wien

T. +43(0)1 489 3961-0

F. +43(0)1 489 3961-7

[mail@szabo-scandic.com](mailto:mail@szabo-scandic.com)

[www.szabo-scandic.com](http://www.szabo-scandic.com)

[linkedin.com/company/szaboscandic](https://www.linkedin.com/company/szaboscandic) 

## CSF2RB 293T Cell Transient Overexpression Lysate(Denatured)

Catalog # : H00001439-T01

規格 : [ 100 uL ]

[List All](#)

### Specification

**Transfected Cell Line:** 293T

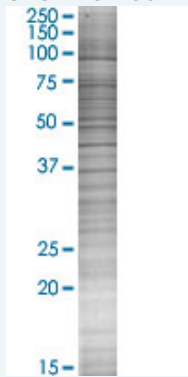
**Plasmid:** pCMV-CSF2RB full-length

**Host:** Human

**Theoretical MW (kDa):** 96.2

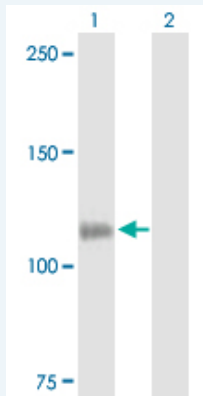
**Quality Control Testing:** Transient overexpression cell lysate was tested with Anti-CSF2RB antibody (H00001439-B01P) by Western Blots.

#### SDS-PAGE Gel



CSF2RB transfected lysate.

#### Western Blot



Lane 1: CSF2RB transfected lysate ( 96.2 KDa)

Lane 2: Non-transfected lysate.

**Storage Buffer:** 1X Sample Buffer (50 mM Tris-HCl, 2% SDS, 10% glycerol, 300 mM 2-mercaptoethanol, 0.01% Bromophenol blue)

**Storage Instruction:** Store at -80°C. Aliquot to avoid repeated freezing and thawing.

**MSDS:**  [Download](#)

### Applications

## Western Blot

### Gene Information

Entrez GeneID: [1439](#)

GeneBank [BC070085](#)  
Accession#:

Protein [AAH70085.1](#)  
Accession#:

Gene Name: CSF2RB

Gene Alias: CD131,CDw131,IL3RB,IL5RB

Gene Description: colony stimulating factor 2 receptor, beta, low-affinity (granulocyte-macrophage)

Omim ID: [138981](#), [265120](#)

Gene Ontology: [Hyperlink](#)

Gene Summary: The protein encoded by this gene is the common beta chain of the high affinity receptor for IL-3, IL-5 and CSF. Defects in this gene have been reported to be associated with protein alveolar proteinosis (PAP).  
[provided by RefSeq]

Other Designations: GM-CSF/IL-3/IL-5 receptor common beta-chain,colony stimulating factor 2 receptor, beta,colony-stimulating factor-2 receptor, beta, low-affinity,cytokine receptor common subunit beta,interleukin 3 receptor/granulocyte-macrophage colony stimulating factor 3

### Gene Pathway

[Apoptosis](#) [Cytokine-cytokine receptor interaction](#) [Jak-STAT signaling pathway](#)

### Related Disease

[Asthma](#) [Asthma](#) [Bipolar Disorder](#) [Bronchial Hyperreactivity](#) [Cardiovascular Diseases](#)  
[Diabetes Mellitus, Type 2](#) [Edema](#) [Genetic Predisposition to Disease](#)  
[Hypersensitivity, Immediate](#) [Kidney Failure, Chronic](#) [Rhinitis, Allergic, Seasonal](#)  
[Schizophrenia](#) [Schizophrenia](#)

[服務條款](#) | [隱私權政策](#) | [著作及商標](#) | [網站地圖](#)

©2016 亞諾法生技股份有限公司 Abnova Corporation. 版權所有.