



# SZABO SCANDIC

Part of Europa Biosite

## Produktinformation



Forschungsprodukte & Biochemikalien



Zellkultur & Verbrauchsmaterial



Diagnostik & molekulare Diagnostik



Laborgeräte & Service

Weitere Information auf den folgenden Seiten!  
See the following pages for more information!



### Lieferung & Zahlungsart

siehe unsere [Liefer- und Versandbedingungen](#)

### Zuschläge

- Mindermengenzuschlag
- Trockeneiszuschlag
- Gefahrgutzuschlag
- Expressversand

### SZABO-SCANDIC HandelsgmbH

Quellenstraße 110, A-1100 Wien

T. +43(0)1 489 3961-0

F. +43(0)1 489 3961-7

[mail@szabo-scandic.com](mailto:mail@szabo-scandic.com)

[www.szabo-scandic.com](http://www.szabo-scandic.com)

[linkedin.com/company/szaboscandic](https://www.linkedin.com/company/szaboscandic) 

## CSF3 MaxPab mouse polyclonal antibody (B01) MaxPab®

Catalog # : H00001440-B01

規格 : [ 50 uL ]

[List All](#)

### Specification

**Product Description:** Mouse polyclonal antibody raised against a full-length human CSF3 protein.

**Immunogen:** CSF3 (NP\_000750, 1 a.a. ~ 207 a.a) full-length human protein.

**Sequence:**  
 MAGPATQSPMKLMALQLLLWHSALWTVQEATPLGPASSLPQSFLKCL  
 EQVRKIQQDGAALQEKLVSECATYKLCHPPELVLLGHSLGIPWAPLSSCP  
 SQALQLAGCLSQLHSGLFLYQGLLQALEGISPELGPTLDTLQLDVADFA  
 TTWQQMEELGMAPALQPTQGAMPAFASAFQRRAGGVLVASHLQSFLE  
 VSYRVLRLHAQP

**Host:** Mouse

**Reactivity:** Human

**Quality Control Testing:** Antibody reactive against mammalian transfected lysate.

**Storage Buffer:** No additive

**Storage Instruction:** Store at -20°C or lower. Aliquot to avoid repeated freezing and thawing.

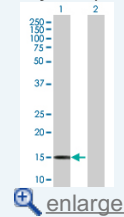
**Note:** For IHC and IF applications, antibody purification with Protein A will be needed prior to use.

**MSDS:**  [Download](#)

**Datasheet:**  [Download](#)

### Application Image

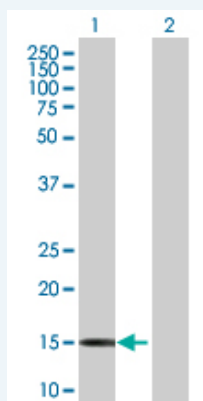
Western Blot (Transfected lysate)



 [enlarge](#)

### Applications


Western Blot (Transfected lysate)



Western Blot analysis of CSF3 expression in transfected 293T cell line (H00001440-T01) by CSF3 MaxPab polyclonal antibody.

Lane 1: CSF3 transfected lysate(22.77 KDa).

Lane 2: Non-transfected lysate.

 [Protocol Download](#)

## Gene Information

---

Entrez GeneID: [1440](#)

GeneBank Accession#: [NM\\_000759](#)

Protein Accession#: [NP\\_000750](#)

Gene Name: CSF3

Gene Alias: G-CSF,GCSF,MGC45931

Gene Description: colony stimulating factor 3 (granulocyte)

Omim ID: [138970](#)

Gene Ontology: [Hyperlink](#)

**Gene Summary:** The protein encoded by this gene is a cytokine that controls the production, differentiation, and function of granulocytes. The active protein is found extracellularly. Three transcript variants encoding three different isoforms have been found for this gene. [provided by RefSeq]

**Other Designations:** OTTHUMP00000164327,colony stimulating factor 3,filgrastim,granulocyte colony stimulating factor,lenograstim,pluripoietin

## Gene Pathway

---

[Cytokine-cytokine receptor interaction](#) [Hematopoietic cell lineage](#)  
[Jak-STAT signaling pathway](#)

## Related Disease

---

[Asthma](#) [Asthma](#) [Bronchiolitis](#), [Viral](#) [Cardiovascular Diseases](#) [Carotid Stenosis](#)  
[Chorioamnionitis](#) [Coronary Artery Disease](#) [Diabetes Mellitus, Type 2](#) [Edema](#)  
[Fetal Membranes](#), [Premature Rupture](#) [Genetic Predisposition to Disease](#)  
[Hematologic Diseases](#) [Infant, Premature, Diseases](#) [Inflammation](#)  
[Leukemia, chronic myeloid](#) [Leukemia, Myelogenous, Chronic, BCR-ABL Positive](#)  
[Lung Neoplasms](#) [Lymphoma, Large B-Cell, Diffuse](#) [Neovascularization, Pathologic](#)

... see more