



SZABO SCANDIC

Part of Europa Biosite

Produktinformation



Forschungsprodukte & Biochemikalien



Zellkultur & Verbrauchsmaterial



Diagnostik & molekulare Diagnostik



Laborgeräte & Service

Weitere Information auf den folgenden Seiten!
See the following pages for more information!



Lieferung & Zahlungsart

siehe unsere [Liefer- und Versandbedingungen](#)

Zuschläge

- Mindermengenzuschlag
- Trockeneiszuschlag
- Gefahrgutzuschlag
- Expressversand

SZABO-SCANDIC HandelsgmbH

Quellenstraße 110, A-1100 Wien

T. +43(0)1 489 3961-0

F. +43(0)1 489 3961-7

mail@szabo-scandic.com

www.szabo-scandic.com

[linkedin.com/company/szaboscandic](https://www.linkedin.com/company/szaboscandic) 



CSH1 MaxPab mouse polyclonal antibody (B01) MaxPab®

Catalog # : H00001442-B01

規格 : [50 uL]

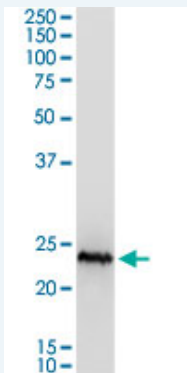
[List All](#)

Specification

Product Description:	Mouse polyclonal antibody raised against a full-length human CSH1 protein.
Immunogen:	CSH1 (NP_001308.1, 1 a.a. ~ 217 a.a) full-length human protein.
Sequence:	MAPGSRTSLLLAFALLCLPWLQEAGAVQTVPLSRLFDHAMLQAHRAHQ LAIDTYQEFEEETYIPKDQKYSFLHDSQTSFCFSDSIPTPSNMEETQQKSN LELLRISLLLIESWLEPVRFRLRSMFANNLVYDTSDDYHLLKDLEEGIQT LMGRLEDGSRRTGQILKQTYSKFDTNSHNHDALLKNYGLLYCFRKDMDK VETFLRMVQCRSVEGSCGF
Host:	Mouse
Reactivity:	Human
Quality Control Testing:	Antibody reactive against mammalian transfected lysate.
Storage Buffer:	No additive
Storage Instruction:	Store at -20°C or lower. Aliquot to avoid repeated freezing and thawing.
Note:	For IHC and IF applications, antibody purification with Protein A will be needed prior to use.
MSDS:	 Download
Datasheet:	 Download

Applications

Western Blot (Tissue lysate)



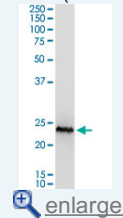
CSH1 MaxPab polyclonal antibody. Western Blot analysis of CSH1 expression in human placenta.

 [Protocol Download](#)

Western Blot (Transfected lysate)

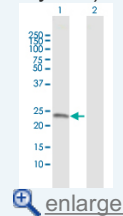
Application Image


Western Blot (Tissue lysate)

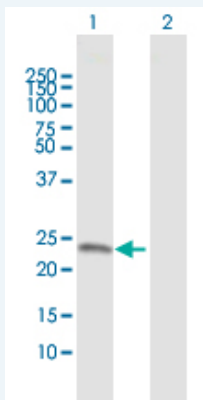


 [enlarge](#)

Western Blot (Transfected lysate)



 [enlarge](#)



Western Blot analysis of CSH1 expression in transfected 293T cell line ([H00009607-T01](#)) by CSH1 MaxPab polyclonal antibody.

Lane 1: CSH1 transfected lysate(25.00 KDa).
Lane 2: Non-transfected lysate.

 [Protocol Download](#)

Gene Information

Entrez GeneID: [1442](#)

GeneBank [NM_001317.3](#)

Accession#:

Protein [NP_001308.1](#)

Accession#:

Gene Name: CSH1

Gene Alias: CSA,CSMT,FLJ75407,PL

Gene chorionic somatomammotropin hormone 1 (placental lactogen)

Description:

Omim ID: [150200](#)

Gene Ontology: [Hyperlink](#)

Gene Summary: The protein encoded by this gene is a member of the somatotropin/prolactin family of hormones and plays an important role in growth control. The gene is located at the growth hormone locus on chromosome 17 along with four other related genes in the same transcriptional orientation; an arrangement which is thought to have evolved by a series of gene duplications. Although the five genes share a remarkably high degree of sequence identity, they are expressed selectively in different tissues. Alternative splicing generates additional isoforms of each of the five growth hormones, leading to further diversity and potential for specialization. This particular family member is expressed mainly in the placenta and utilizes multiple transcription initiation sites. Expression of the identical mature proteins for chorionic somatomammotropin hormones 1 and 2 is upregulated during development, although the ratio of 1 to 2 increases by term. Mutations in this gene result in placental lactogen deficiency and Silver-Russell syndrome. [provided by RefSeq]

Other Designations: CS-1,choriomammotropin,chorionic somatomammotropin A,chorionic somatomammotropin hormone 1,hCS-A,placental lactogen

Gene Pathway

[Cytokine-cytokine receptor interaction](#) [Jak-STAT signaling pathway](#)

[Neuroactive ligand-receptor interaction](#)

Related Disease

[Birth Weight](#) [Body Weight](#) [Breast cancer](#) [Breast Neoplasms](#)
[Genetic Predisposition to Disease](#) [Metabolic Syndrome X](#)

[服務條款](#) | [隱私權政策](#) | [著作及商標](#) | [網站地圖](#)

©2016 亞諾法生技股份有限公司 Abnova Corporation. 版權所有.