



SZABO SCANDIC

Part of Europa Biosite

Produktinformation



Forschungsprodukte & Biochemikalien



Zellkultur & Verbrauchsmaterial



Diagnostik & molekulare Diagnostik



Laborgeräte & Service

Weitere Information auf den folgenden Seiten!
See the following pages for more information!



Lieferung & Zahlungsart

siehe unsere [Liefer- und Versandbedingungen](#)

Zuschläge

- Mindermengenzuschlag
- Trockeneiszuschlag
- Gefahrgutzuschlag
- Expressversand

SZABO-SCANDIC HandelsgmbH

Quellenstraße 110, A-1100 Wien

T. +43(0)1 489 3961-0

F. +43(0)1 489 3961-7

mail@szabo-scandic.com

www.szabo-scandic.com

[linkedin.com/company/szaboscandic](https://www.linkedin.com/company/szaboscandic) 

CSH1 293T Cell Transient Overexpression Lysate(Denatured)

Catalog # : H00001442-T02

規格 : [100 uL]

List All

Specification

Transfected Cell Line: 293T

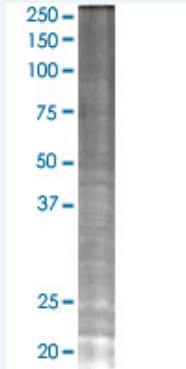
Plasmid: pCMV-CSH1 full-length

Host: Human

Theoretical MW (kDa): 25

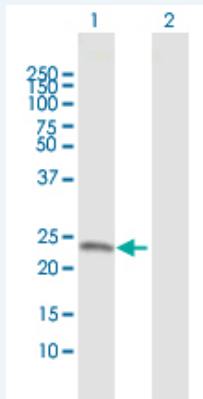
Quality Control Testing: Transient overexpression cell lysate was tested with Anti-CART antibody (H00001442-B01) by Western Blots.

SDS-PAGE Gel



CSH1 transfected lysate.

Western Blot



Lane 1: CSH1 transfected lysate (25.00 KDa)

Lane 2: Non-transfected lysate.

Storage Buffer: 1X Sample Buffer (50 mM Tris-HCl, 2% SDS, 10% glycerol, 300 mM 2-mercaptoethanol, 0.01% Bromophenol blue)

Storage Instruction: Store at -80°C. Aliquot to avoid repeated freezing and thawing.

MSDS:  [Download](#)

Applications

Western Blot

Gene Information

Entrez GeneID: [1442](#)

GeneBank [NM_001317.3](#)
Accession#:

Protein [NP_001308.1](#)
Accession#:

Gene Name: CSH1

Gene Alias: CSA,CSMT,FLJ75407,PL

Gene Description: chorionic somatomammotropin hormone 1 (placental lactogen)

Omim ID: [150200](#)

Gene Ontology: [Hyperlink](#)

Gene Summary: The protein encoded by this gene is a member of the somatotropin/prolactin family of hormones and plays an important role in growth control. The gene is located at the growth hormone locus on chromosome 17 along with four other related genes in the same transcriptional orientation; an arrangement which is thought to have evolved by a series of gene duplications. Although the five genes share a remarkably high degree of sequence identity, they are expressed selectively in different tissues. Alternative splicing generates additional isoforms of each of the five growth hormones, leading to further diversity and potential for specialization. This particular family member is expressed mainly in the placenta and utilizes multiple transcription initiation sites. Expression of the identical mature proteins for chorionic somatomammotropin hormones 1 and 2 is upregulated during development, although the ratio of 1 to 2 increases by term. Mutations in this gene result in placental lactogen deficiency and Silver-Russell syndrome. [provided by RefSeq]

Other Designations: CS-1,choriomammotropin,chorionic somatomammotropin A,chorionic somatomammotropin hormone 1,hCS-A,placental lactogen

Gene Pathway

[Cytokine-cytokine receptor interaction](#) [Jak-STAT signaling pathway](#)
[Neuroactive ligand-receptor interaction](#)

Related Disease

[Birth Weight](#) [Body Weight](#) [Breast cancer](#) [Breast Neoplasms](#)
[Genetic Predisposition to Disease](#) [Metabolic Syndrome X](#)