



# SZABO SCANDIC

Part of Europa Biosite

## Produktinformation



Forschungsprodukte & Biochemikalien



Zellkultur & Verbrauchsmaterial



Diagnostik & molekulare Diagnostik



Laborgeräte & Service

Weitere Information auf den folgenden Seiten!  
See the following pages for more information!



### Lieferung & Zahlungsart

siehe unsere [Liefer- und Versandbedingungen](#)

### Zuschläge

- Mindermengenzuschlag
- Trockeneiszuschlag
- Gefahrgutzuschlag
- Expressversand

### SZABO-SCANDIC HandelsgmbH

Quellenstraße 110, A-1100 Wien

T. +43(0)1 489 3961-0

F. +43(0)1 489 3961-7

[mail@szabo-scandic.com](mailto:mail@szabo-scandic.com)

[www.szabo-scandic.com](http://www.szabo-scandic.com)

[linkedin.com/company/szaboscandic](https://www.linkedin.com/company/szaboscandic) 



**CSH2 purified MaxPab mouse polyclonal antibody (B01P)** MaxPab®

Catalog # : H00001443-B01P

規格 : [ 50 ug ]

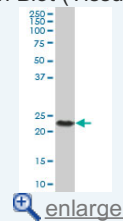
List All

**Specification**

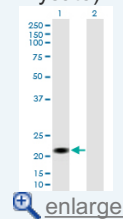
<b>Product Description:</b>	Mouse polyclonal antibody raised against a full-length human CSH2 protein.
<b>Immunogen:</b>	CSH2 (AAH22044, 1 a.a. ~ 217 a.a) full-length human protein.
<b>Sequence:</b>	MAAGSRTSLLLAFALLCLPWLQEAGAVQTVPLSRLFDHAMLQAHRHQ LAIDTYQEFEEYIPKDKYSFLHDSQTSFCFSDSIPTPSNVEETQQKSNL ELLRISLLIESWLEPVRFRLSMFANNLVYDTSDDDYHLLKDLEEGIQL MGRLEDGSRRTGQILKQTYSKFDTNSHNHDALLKNYGLLYCFRKDMDK VETFLRMVQCRSVEGSCGF
<b>Host:</b>	Mouse
<b>Reactivity:</b>	Human
<b>Quality Control Testing:</b>	Antibody reactive against mammalian transfected lysate.
<b>Storage Buffer:</b>	In 1x PBS, pH 7.4
<b>Storage Instruction:</b>	Store at -20°C or lower. Aliquot to avoid repeated freezing and thawing.
<b>MSDS:</b>	 <a href="#">Download</a>
<b>Datasheet:</b>	 <a href="#">Download</a>

**Application Image**

Western Blot (Tissue lysate)

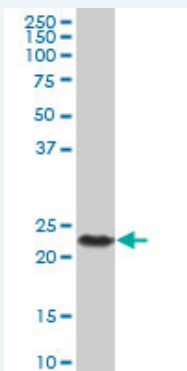


Western Blot (Transfected lysate)



**Applications**

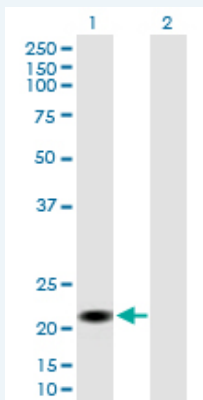
Western Blot (Tissue lysate)



CSH2 MaxPab polyclonal antibody. Western Blot analysis of CSH2 expression in human placenta.

 [Protocol Download](#)

Western Blot (Transfected lysate)



Western Blot analysis of CSH2 expression in transfected 293T cell line ([H00001443-T01](#)) by CSH2 MaxPab polyclonal antibody.

Lane 1: CSH2 transfected lysate(23.98 KDa).

Lane 2: Non-transfected lysate.

 [Protocol Download](#)

### Gene Information

**Entrez GeneID:** [1443](#)

**GeneBank** [BC022044](#)

**Accession#:**

**Protein** [AAH22044](#)

**Accession#:**

**Gene Name:** CSH2

**Gene Alias:** CS-2,CSB,hCS-B

**Gene** chorionic somatomammotropin hormone 2

**Description:**

**Omim ID:** [118820](#)

**Gene Ontology:** [Hyperlink](#)

**Gene Summary:** The protein encoded by this gene is a member of the somatotropin/prolactin family of hormones and plays an important role in growth control. The gene is located at the growth hormone locus on chromosome 17 along with four other related genes in the same transcriptional orientation; an arrangement which is thought to have evolved by a series of gene duplications. Although the five genes share a remarkably high degree of sequence identity, they are expressed selectively in different tissues. Alternative splicing generates additional isoforms of each of the five growth hormones. This particular family member is expressed mainly in the placenta and utilizes multiple transcription initiation sites. Expression of the identical mature proteins for chorionic somatomammotropin hormones 1 and 2 is upregulated during development, while the ratio of 1 to 2 increases by term. Structural and expression differences provide avenues for developmental regulation and tissue specificity. [provided by RefSeq]

**Other** chorionic somatomammotropin B,placental lactogen

**Designations:**

### Related Disease

[Birth Weight Metabolic Syndrome X](#)

