



SZABO SCANDIC

Part of Europa Biosite

Produktinformation



Forschungsprodukte & Biochemikalien



Zellkultur & Verbrauchsmaterial



Diagnostik & molekulare Diagnostik



Laborgeräte & Service

Weitere Information auf den folgenden Seiten!
See the following pages for more information!



Lieferung & Zahlungsart

siehe unsere [Liefer- und Versandbedingungen](#)

Zuschläge

- Mindermengenzuschlag
- Trockeneiszuschlag
- Gefahrgutzuschlag
- Expressversand

SZABO-SCANDIC HandelsgmbH

Quellenstraße 110, A-1100 Wien

T. +43(0)1 489 3961-0

F. +43(0)1 489 3961-7

mail@szabo-scandic.com

www.szabo-scandic.com

[linkedin.com/company/szaboscandic](https://www.linkedin.com/company/szaboscandic) 



CSH2 MaxPab mouse polyclonal antibody (B02) MaxPab®

Catalog # : H00001443-B02

規格 : [50 uL]

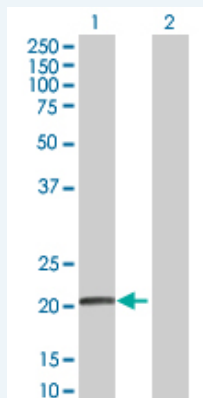
[List All](#)

Specification

Product Description:	Mouse polyclonal antibody raised against a full-length human CSH2 protein.
Immunogen:	CSH2 (NP_066271.1, 1 a.a. ~ 217 a.a) full-length human protein.
Sequence:	MAAGSRTSLLLAFALLCLPWLQEAGAVQTVPLSRLFDHAMLQAHRHQ LAIDTYQEFEEYIPKDQKYSFLHDSQTSFCFSDSIPTPSNMEETQQKSN LELLRISLLIESWLEPVRFRLSMFANNLVYDTSDDYHLLKDLEEGIQT LMGRLEDGSRRTGQILKQTYSKFDTNSHNHDALLKNYGLLYCFRKDMDK VETFLRMVQCRSVEGSCGF
Host:	Mouse
Reactivity:	Human
Quality Control Testing:	Antibody reactive against mammalian transfected lysate.
Storage Buffer:	No additive
Storage Instruction:	Store at -20°C or lower. Aliquot to avoid repeated freezing and thawing.
Note:	For IHC and IF applications, antibody purification with Protein A will be needed prior to use.
MSDS:	 Download
Datasheet:	 Download

Applications

Western Blot (Transfected lysate)

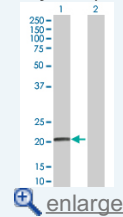


Western Blot analysis of CSH2 expression in transfected 293T cell line (H00001443-T02) by CSH2 MaxPab polyclonal antibody.

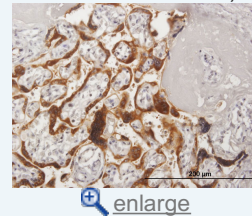
Lane 1: CSH2 transfected lysate(23.87 KDa).
Lane 2: Non-transfected lysate.


Application Image

Western Blot (Transfected lysate)

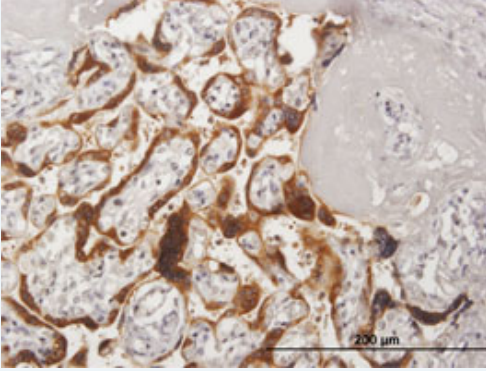


Immunohistochemistry (Formalin/PFA-fixed paraffin-embedded sections)



 [Protocol Download](#)

Immunohistochemistry (Formalin/PFA-fixed paraffin-embedded sections)



[enlarge this image](#)

Immunoperoxidase of purified MaxPab antibody to CSH2 on formalin-fixed paraffin-embedded human placenta. [antibody concentration 3 ug/ml]

 [Protocol Download](#)

Gene Information

Entrez GeneID: [1443](#)

GeneBank [NM_020991.3](#)

Accession#:

Protein [NP_066271.1](#)

Accession#:

Gene Name: CSH2

Gene Alias: CS-2,CSB,hCS-B

Gene Description: chorionic somatomammotropin hormone 2

Omim ID: [118820](#)

Gene Ontology: [Hyperlink](#)

Gene Summary: The protein encoded by this gene is a member of the somatotropin/prolactin family of hormones and plays an important role in growth control. The gene is located at the growth hormone locus on chromosome 17 along with four other related genes in the same transcriptional orientation; an arrangement which is thought to have evolved by a series of gene duplications. Although the five genes share a remarkably high degree of sequence identity, they are expressed selectively in different tissues. Alternative splicing generates additional isoforms of each of the five growth hormones. This particular family member is expressed mainly in the placenta and utilizes multiple transcription initiation sites. Expression of the identical mature proteins for chorionic somatomammotropin hormones 1 and 2 is upregulated during development, while the ratio of 1 to 2 increases by term. Structural and expression differences provide avenues for developmental regulation and tissue specificity. [provided by RefSeq]

Other Designations: chorionic somatomammotropin B,placental lactogen

Related Disease

[Birth Weight Metabolic Syndrome X](#)

