



SZABO SCANDIC

Part of Europa Biosite

Produktinformation



Forschungsprodukte & Biochemikalien



Zellkultur & Verbrauchsmaterial



Diagnostik & molekulare Diagnostik



Laborgeräte & Service

Weitere Information auf den folgenden Seiten!
See the following pages for more information!



Lieferung & Zahlungsart

siehe unsere [Liefer- und Versandbedingungen](#)

Zuschläge

- Mindermengenzuschlag
- Trockeneiszuschlag
- Gefahrgutzuschlag
- Expressversand

SZABO-SCANDIC HandelsgmbH

Quellenstraße 110, A-1100 Wien

T. +43(0)1 489 3961-0

F. +43(0)1 489 3961-7

mail@szabo-scandic.com

www.szabo-scandic.com

[linkedin.com/company/szaboscandic](https://www.linkedin.com/company/szaboscandic) 

CSH2 293T Cell Transient Overexpression Lysate(Denatured)

Catalog # : H00001443-T01

規格 : [100 uL]

List All

Specification

Transfected Cell Line: 293T

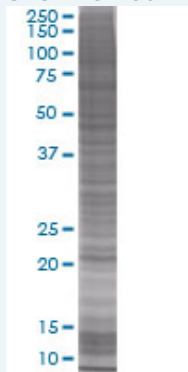
Plasmid: pCMV-CSH2 full-length

Host: Human

Theoretical MW (kDa): 23.98

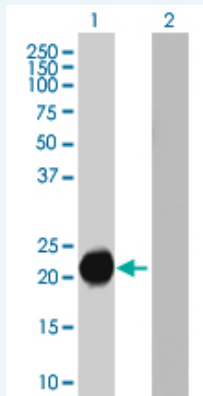
Quality Control Testing: Transient overexpression cell lysate was tested with Anti-CSH2 antibody (H00001443-B01) by Western Blots.

SDS-PAGE Gel



CSH2 transfected lysate

Western Blot



Lane 1: CSH2 transfected lysate (23.98 KDa).

Lane 2: Non-transfected lysate.

Storage Buffer: 1X Sample Buffer (50 mM Tris-HCl, 2% SDS, 10% glycerol, 300 mM 2-mercaptoethanol, 0.01% Bromophenol blue)

Storage Instruction: Store at -80°C. Aliquot to avoid repeated freezing and thawing.

MSDS:  [Download](#)

Applications

Application Image

Western Blot

Western Blot

Gene Information

Entrez GeneID: [1443](#)

GeneBank [BC022044](#)
Accession#:

Protein [AAH22044](#)
Accession#:

Gene Name: CSH2

Gene Alias: CS-2,CSB,hCS-B

Gene Description: chorionic somatomammotropin hormone 2

Omim ID: [118820](#)

Gene Ontology: [Hyperlink](#)

Gene Summary: The protein encoded by this gene is a member of the somatotropin/prolactin family of hormones and plays an important role in growth control. The gene is located at the growth hormone locus on chromosome 17 along with four other related genes in the same transcriptional orientation; an arrangement which is thought to have evolved by a series of gene duplications. Although the five genes share a remarkably high degree of sequence identity, they are expressed selectively in different tissues. Alternative splicing generates additional isoforms of each of the five growth hormones. This particular family member is expressed mainly in the placenta and utilizes multiple transcription initiation sites. Expression of the identical mature proteins for chorionic somatomammotropin hormones 1 and 2 is upregulated during development, while the ratio of 1 to 2 increases by term. Structural and expression differences provide avenues for developmental regulation and tissue specificity. [provided by RefSeq]

Other Designations: chorionic somatomammotropin B,placental lactogen

Related Disease

[Birth Weight Metabolic Syndrome X](#)