



SZABO SCANDIC

Part of Europa Biosite

Produktinformation



Forschungsprodukte & Biochemikalien



Zellkultur & Verbrauchsmaterial



Diagnostik & molekulare Diagnostik



Laborgeräte & Service

Weitere Information auf den folgenden Seiten!
See the following pages for more information!



Lieferung & Zahlungsart

siehe unsere [Liefer- und Versandbedingungen](#)

Zuschläge

- Mindermengenzuschlag
- Trockeneiszuschlag
- Gefahrgutzuschlag
- Expressversand

SZABO-SCANDIC HandelsgmbH

Quellenstraße 110, A-1100 Wien

T. +43(0)1 489 3961-0

F. +43(0)1 489 3961-7

mail@szabo-scandic.com

www.szabo-scandic.com

[linkedin.com/company/szaboscandic](https://www.linkedin.com/company/szaboscandic) 

CSN1S1 purified MaxPab rabbit polyclonal antibody (D01P) MaxPab®

Catalog # : H00001446-D01P

規格 : [100 ug]

[List All](#)

Specification

Product Description: Rabbit polyclonal antibody raised against a full-length human CSN1S1 protein.

Immunogen: CSN1S1 (NP_001881.1, 1 a.a. ~ 185 a.a) full-length human protein.

Sequence:
 MRLILTCLVAVALARPKLPLRYPERLQNPSESSEPIPLESREEYMNGMN
 RQRNLRKQTDKIDTRNESTQNCVVAEPEKMESSISSSEEMSLKCA
 EQFCRLNEYNLQLQAAHAQEIQIRRMNENSHVQVPFQQLNQLAAYPYA
 WYYYPQIMQYVPPFPFSDISNPTAHENYEKNNVMLQW

Host: Rabbit

Reactivity: Human, Mouse

Quality Control Testing: Antibody reactive against mammalian transfected lysate.

Storage Buffer: In 1x PBS, pH 7.4

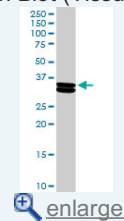
Storage Instruction: Store at -20°C or lower. Aliquot to avoid repeated freezing and thawing.

MSDS:  [Download](#)

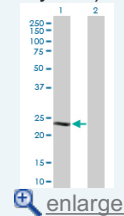
Datasheet:  [Download](#)

Application Image

Western Blot (Tissue lysate)

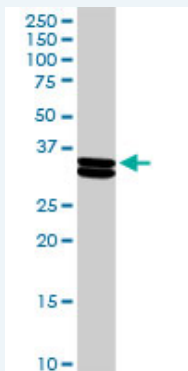


Western Blot (Transfected lysate)



Applications

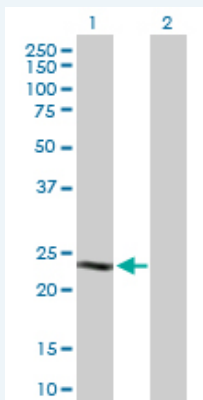
Western Blot (Tissue lysate)



CSN1S1 MaxPab rabbit polyclonal antibody. Western Blot analysis of CSN1S1 expression in mouse liver.


 [Protocol Download](#)

Western Blot (Transfected lysate)



Western Blot analysis of CSN1S1 expression in transfected 293T cell line ([H00001446-T02](#)) by CSN1S1 MaxPab polyclonal antibody.

Lane 1: CSN1S1 transfected lysate(21.70 KDa).
Lane 2: Non-transfected lysate.

 [Protocol Download](#)

Gene Information

Entrez GeneID: [1446](#)

GeneBank Accession#: [NM_001890.1](#)

Protein Accession#: [NP_001881.1](#)

Gene Name: CSN1S1

Gene Alias: CASA,CSN1,MGC149368

Gene Description: casein alpha s1

Omim ID: [115450](#)

Gene Ontology: [Hyperlink](#)

Other Designations: casein, alpha

[服務條款](#) | [隱私權政策](#) | [著作及商標](#) | [網站地圖](#)

©2016 亞諾法生技股份有限公司 Abnova Corporation. 版權所有.