



# SZABO SCANDIC

Part of Europa Biosite

## Produktinformation



Forschungsprodukte & Biochemikalien



Zellkultur & Verbrauchsmaterial



Diagnostik & molekulare Diagnostik



Laborgeräte & Service

Weitere Information auf den folgenden Seiten!  
See the following pages for more information!



### Lieferung & Zahlungsart

siehe unsere [Liefer- und Versandbedingungen](#)

### Zuschläge

- Mindermengenzuschlag
- Trockeneiszuschlag
- Gefahrgutzuschlag
- Expressversand

### SZABO-SCANDIC HandelsgmbH

Quellenstraße 110, A-1100 Wien

T. +43(0)1 489 3961-0

F. +43(0)1 489 3961-7

[mail@szabo-scandic.com](mailto:mail@szabo-scandic.com)

[www.szabo-scandic.com](http://www.szabo-scandic.com)

[linkedin.com/company/szaboscandic](https://www.linkedin.com/company/szaboscandic) 

## CSNK1G2 monoclonal antibody (M08), clone 2F5

Catalog # : H00001455-M08

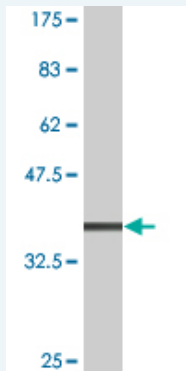
規格 : [ 100 ug ]

[List All](#)

### Specification

<b>Product Description:</b>	Mouse monoclonal antibody raised against a partial recombinant CSNK1G2.
<b>Immunogen:</b>	CSNK1G2 (AAH18699, 315 a.a. ~ 415 a.a) partial recombinant protein with GST tag. MW of the GST tag alone is 26 KDa.
<b>Sequence:</b>	LFDRSGFVFDYEYDWAGKPLPTPIGTVHTDLPSQPQLRDKTQPHSKNQ ALNSTNGELNADDPTAGHSNAPITAPAEVEVADETKCCCFKRRKRKSL QRHK
<b>Host:</b>	Mouse
<b>Reactivity:</b>	Human
<b>Isotype:</b>	IgG2a Kappa

**Quality Control Testing:** Antibody Reactive Against Recombinant Protein.



Western Blot detection against Immunogen (36.74 KDa) .

**Storage Buffer:** In 1x PBS, pH 7.4

**Storage Instruction:** Store at -20°C or lower. Aliquot to avoid repeated freezing and thawing.

**MSDS:** [Download](#)

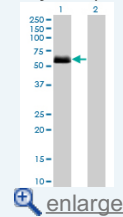
**Datasheet:** [Download](#)

### Applications

Western Blot (Transfected lysate)

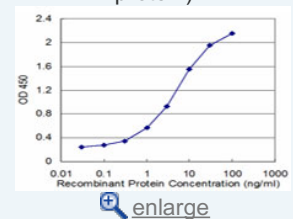
### Application Image

Western Blot (Transfected lysate)

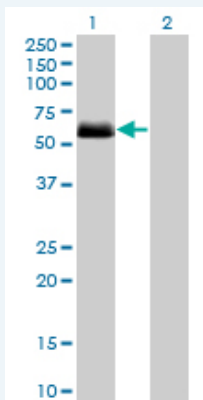


Western Blot (Recombinant protein)

Sandwich ELISA (Recombinant protein)



ELISA



Western Blot analysis of CSNK1G2 expression in transfected 293T cell line by CSNK1G2 monoclonal antibody (M08), clone 2F5.

Lane 1: CSNK1G2 transfected lysate(47.4 KDa).

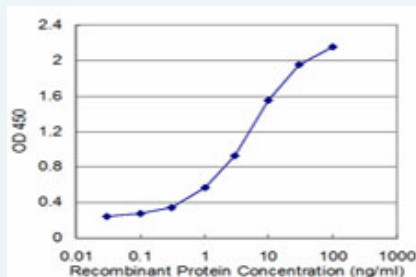
Lane 2: Non-transfected lysate.

[Protocol Download](#)

### Western Blot (Recombinant protein)

[Protocol Download](#)

### Sandwich ELISA (Recombinant protein)



Detection limit for recombinant GST tagged CSNK1G2 is approximately 0.03ng/ml as a capture antibody.

[Protocol Download](#)

### ELISA

### Gene Information

Entrez GeneID: [1455](#)

GeneBank [BC018699](#)  
Accession#:

Protein [AAH18699](#)  
Accession#:

Gene Name: CSNK1G2

Gene Alias: CK1g2

Gene Description: casein kinase 1, gamma 2

Omim ID: [602214](#)

Gene Ontology: [Hyperlink](#)

Other Designations: casein kinase 1 isoform gamma-2

### Gene Pathway

[Hedgehog signaling pathway](#)

**Related Disease**

[Epilepsy](#) [Fever](#) [Genetic Predisposition to Disease](#) [Seizures](#) [Seizures, Febrile](#)

---

[服務條款](#) | [隱私權政策](#) | [著作及商標](#) | [網站地圖](#)

©2016 亞諾法生技股份有限公司 Abnova Corporation. 版權所有.