



SZABO SCANDIC

Part of Europa Biosite

Produktinformation



Forschungsprodukte & Biochemikalien



Zellkultur & Verbrauchsmaterial



Diagnostik & molekulare Diagnostik



Laborgeräte & Service

Weitere Information auf den folgenden Seiten!
See the following pages for more information!



Lieferung & Zahlungsart

siehe unsere [Liefer- und Versandbedingungen](#)

Zuschläge

- Mindermengenzuschlag
- Trockeneiszuschlag
- Gefahrgutzuschlag
- Expressversand

SZABO-SCANDIC HandelsgmbH

Quellenstraße 110, A-1100 Wien

T. +43(0)1 489 3961-0

F. +43(0)1 489 3961-7

mail@szabo-scandic.com

www.szabo-scandic.com

[linkedin.com/company/szaboscandic](https://www.linkedin.com/company/szaboscandic) 

CSNK2A1 purified MaxPab rabbit polyclonal antibody (D01P) MaxPab®

Catalog # : H00001457-D01P

規格 : [100 ug]

List All

Specification

Product Description: Rabbit polyclonal antibody raised against a full-length human CSNK2A1 protein.

Immunogen: CSNK2A1 (NP_001886.1, 1 a.a. ~ 391 a.a) full-length human protein.

Sequence:
 MSGPVPSRARVYTDVNTHRPREYWDYESHVVEWGNQDDYQLVRKLG
 GKYSEVFEAINITNNEKVVVKILKPVKKKKIKREIKILENLRGGPNIITLADIVK
 DPVSRTPALVFEHVNNTDFKQLYQTLTDYDIRFYMYEILKALDYCHSMGI
 MHRDVKPHNVNMDHEHRKRLRIDWGLAEFYHPGQEYNNRVASRYFKGPE
 LLVDYQMYDYSLDMWSLGCMASIFRKEPFFHGHNDYDQLVRIAKVLG
 TEDLYDYIDKYNIELDPRFNDILGRHSRKRWERFVHSENQHLVSPEALDFL
 DKLLRYDHQSRLTAREAMEHPYFYTVKQARMGSSSMPPGGSTPVSSA
 NMMSGISSVPTPSPLGPLAGSPVIAAANPLGMPVPAAGAQQ

Host: Rabbit

Reactivity: Human

Quality Control Testing: Antibody reactive against mammalian transfected lysate.

Storage Buffer: In 1x PBS, pH 7.4

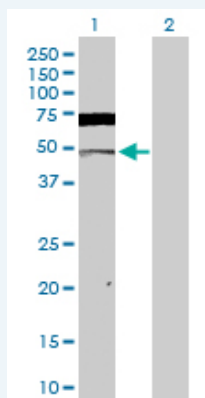
Storage Instruction: Store at -20°C or lower. Aliquot to avoid repeated freezing and thawing.

MSDS:  [Download](#)

Datasheet:  [Download](#)

Applications

Western Blot (Transfected lysate)



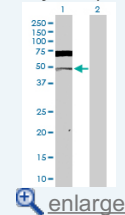
Western Blot analysis of CSNK2A1 expression in transfected 293T cell line ([H00001457-T02](#)) by CSNK2A1 MaxPab polyclonal antibody.

Lane 1: CSNK2A1 transfected lysate(45.10 kDa).

Lane 2: Non-transfected lysate.

Application Image

Western Blot (Transfected lysate)



 enlarge

 [Protocol Download](#)

Gene Information

Entrez GeneID: [1457](#)

GeneBank Accession#: [NM_001895.3](#)

Protein Accession#: [NP_001886.1](#)

Gene Name: CSNK2A1

Gene Alias: CK2A1,CKII

Gene Description: casein kinase 2, alpha 1 polypeptide

Omim ID: [115440](#)

Gene Ontology: [Hyperlink](#)

Gene Summary: Casein kinase II is a serine/threonine protein kinase that phosphorylates acidic proteins such as casein. The kinase exists as a tetramer and is composed of an alpha, an alpha-prime, and two beta subunits. The alpha subunits contain the catalytic activity while the beta subunits undergo autophosphorylation. The protein encoded by this gene represents the alpha subunit. While this gene is found on chromosome 20, a related transcribed pseudogene is found on chromosome 11. Three transcript variants encoding two different proteins have been found for this gene. [provided by RefSeq]

Other Designations: CK2 catalytic subunit
alpha,OTTHUMP00000029925,OTTHUMP00000029926,casein kinase II
alpha 1 subunit,casein kinase II alpha subunit,protein kinase CK2

Gene Pathway

[Adherens junction](#) [Tight junction](#) [Wnt signaling pathway](#)

Related Disease

[Bipolar Disorder](#) [Cardiovascular Diseases](#) [Colorectal Neoplasms](#) [Diabetes Mellitus, Type 2](#)
[Edema](#) [Genetic Predisposition to Disease](#) [Psychiatric Status Rating Scales](#)
[Psychotic Disorders](#) [Schizophrenia](#)