



# SZABO SCANDIC

Part of Europa Biosite

## Produktinformation



Forschungsprodukte & Biochemikalien



Zellkultur & Verbrauchsmaterial



Diagnostik & molekulare Diagnostik



Laborgeräte & Service

Weitere Information auf den folgenden Seiten!  
See the following pages for more information!



### Lieferung & Zahlungsart

siehe unsere [Liefer- und Versandbedingungen](#)

### Zuschläge

- Mindermengenzuschlag
- Trockeneiszuschlag
- Gefahrgutzuschlag
- Expressversand

### SZABO-SCANDIC HandelsgmbH

Quellenstraße 110, A-1100 Wien

T. +43(0)1 489 3961-0

F. +43(0)1 489 3961-7

[mail@szabo-scandic.com](mailto:mail@szabo-scandic.com)

[www.szabo-scandic.com](http://www.szabo-scandic.com)

[linkedin.com/company/szaboscandic](https://www.linkedin.com/company/szaboscandic) 

## CSNK2A1 monoclonal antibody (M01), clone 3D9

Catalog # : H00001457-M01

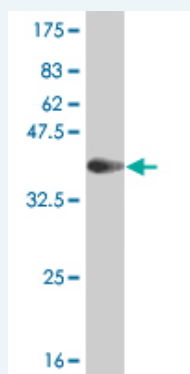
規格 : [ 100 ug ]

[List All](#)

### Specification

<b>Product Description:</b>	Mouse monoclonal antibody raised against a partial recombinant CSNK2A1.
<b>Immunogen:</b>	CSNK2A1 (AAH11668, 1 a.a. ~ 100 a.a) partial recombinant protein with GST tag. MW of the GST tag alone is 26 KDa.
<b>Sequence:</b>	MSGPVPSRARVYTDVNTHRPREYWDYESHVVEWGNQDDYQLVRKLGK GKYSEVFEAINITNNEKVVVKILKPVKVKKKIKREIKILENLRGGPNIITLADI
<b>Host:</b>	Mouse
<b>Reactivity:</b>	Human
<b>Isotype:</b>	IgG2a Kappa

**Quality Control Testing:** Antibody Reactive Against Recombinant Protein.



Western Blot detection against Immunogen (36.63 KDa) .

**Storage Buffer:** In 1x PBS, pH 7.4

**Storage Instruction:** Store at -20°C or lower. Aliquot to avoid repeated freezing and thawing.

**MSDS:** [Download](#)

**Datasheet:** [Download](#)

### Publication Reference

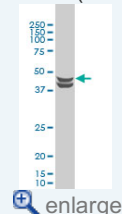
1. [CK2 Inhibitors Enhance the Radiosensitivity of Human Non-Small Cell Lung Cancer Cells Through Inhibition of Stat3 Activation.](#)  
Lin YC, Hung MS, Lin CK, Li JM, Lee KD, Li YC, Chen MF, Chen JK, Yang CT. *Cancer Biother Radiopharm.* 2011 Jun;26(3):381-8. Epub 2011 Jun 28.

### Applications

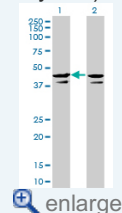
**Western Blot (Cell lysate)**

### Application Image

Western Blot (Cell lysate)

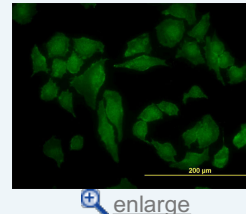


Western Blot (Transfected lysate)

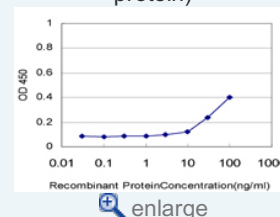


Western Blot (Recombinant protein)

Immunofluorescence

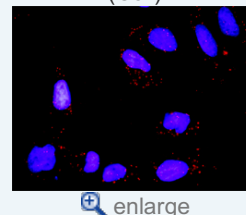


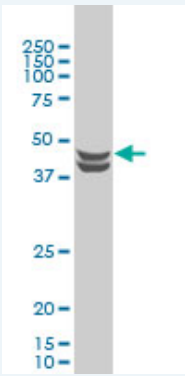
Sandwich ELISA (Recombinant protein)



ELISA

*In situ* Proximity Ligation Assay (Cell)

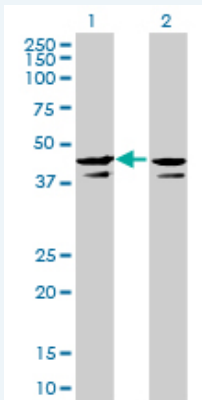




CSNK2A1 monoclonal antibody (M01), clone 3D9 Western Blot analysis of CSNK2A1 expression in HeLa S3 NE ( Cat # L013V3 ).

[Protocol Download](#)

#### Western Blot (Transfected lysate)



Western Blot analysis of CSNK2A1 expression in transfected 293T cell line by CSNK2A1 monoclonal antibody (M01), clone 3D9.

Lane 1: CSNK2A1 transfected lysate(45.1 kDa).

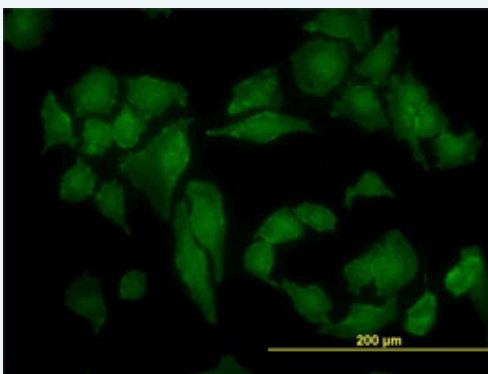
Lane 2: Non-transfected lysate.

[Protocol Download](#)

#### Western Blot (Recombinant protein)

[Protocol Download](#)

#### Immunofluorescence

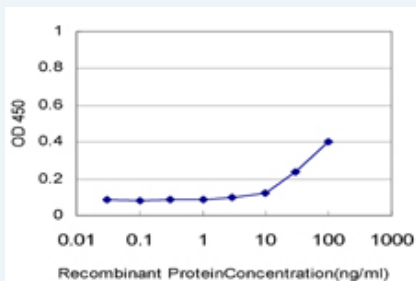


[enlarge this image](#)

Immunofluorescence of monoclonal antibody to CSNK2A1 on HeLa cell. [antibody concentration 10 ug/ml]

[Protocol Download](#)

#### Sandwich ELISA (Recombinant protein)

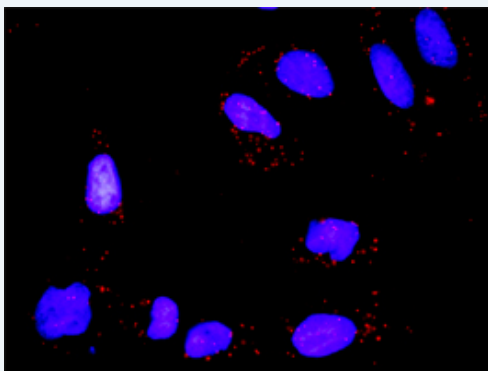


Detection limit for recombinant GST tagged CSNK2A1 is approximately 3ng/ml as a capture antibody.

[Protocol Download](#)

## ELISA

### *In situ* Proximity Ligation Assay (Cell)



Proximity Ligation Analysis of protein-protein interactions between TP53 and CSNK2A1. HeLa cells were stained with anti-TP53 rabbit purified polyclonal 1:1200 and anti-CSNK2A1 mouse monoclonal antibody 1:50. Each red dot represents the detection of protein-protein interaction complex, and nuclei were counterstained with DAPI (blue).

## Gene Information

Entrez GeneID: [1457](#)

GeneBank [BC011668](#)  
Accession#:

Protein [AAH11668](#)  
Accession#:

Gene Name: CSNK2A1

Gene Alias: CK2A1,CKII

Gene Description: casein kinase 2, alpha 1 polypeptide

Omim ID: [115440](#)

Gene Ontology: [Hyperlink](#)

**Gene Summary:** Casein kinase II is a serine/threonine protein kinase that phosphorylates acidic proteins such as casein. The kinase exists as a tetramer and is composed of an alpha, an alpha-prime, and two beta subunits. The alpha subunits contain the catalytic activity while the beta subunits undergo autophosphorylation. The protein encoded by this gene represents the alpha subunit. While this gene is found on chromosome 20, a related transcribed pseudogene is found on chromosome 11. Three transcript variants encoding two different proteins have been found for this gene. [provided by RefSeq]

Other CK2 catalytic subunit

**Designations:** [alpha](#),[OTTHUMP00000029925](#),[OTTHUMP00000029926](#),[casein kinase II alpha 1 subunit](#),[casein kinase II alpha subunit](#),[protein kinase CK2](#)

---

### Gene Pathway

---

[Adherens junction](#) [Tight junction](#) [Wnt signaling pathway](#)

### Related Disease

---

[Bipolar Disorder](#) [Cardiovascular Diseases](#) [Colorectal Neoplasms](#) [Diabetes Mellitus, Type 2](#)  
[Edema](#) [Genetic Predisposition to Disease](#) [Psychiatric Status Rating Scales](#)  
[Psychotic Disorders](#) [Schizophrenia](#)

---

[服務條款](#) | [隱私權政策](#) | [著作及商標](#) | [網站地圖](#)

©2016 亞諾法生技股份有限公司 Abnova Corporation. 版權所有.