



# SZABO SCANDIC

Part of Europa Biosite

## Produktinformation



Forschungsprodukte & Biochemikalien



Zellkultur & Verbrauchsmaterial



Diagnostik & molekulare Diagnostik



Laborgeräte & Service

Weitere Information auf den folgenden Seiten!  
See the following pages for more information!



### Lieferung & Zahlungsart

siehe unsere [Liefer- und Versandbedingungen](#)

### Zuschläge

- Mindermengenzuschlag
- Trockeneiszuschlag
- Gefahrgutzuschlag
- Expressversand

### SZABO-SCANDIC HandelsgmbH

Quellenstraße 110, A-1100 Wien

T. +43(0)1 489 3961-0

F. +43(0)1 489 3961-7

[mail@szabo-scandic.com](mailto:mail@szabo-scandic.com)

[www.szabo-scandic.com](http://www.szabo-scandic.com)

[linkedin.com/company/szaboscandic](https://www.linkedin.com/company/szaboscandic) 

## CSNK2A1 293T Cell Transient Overexpression Lysate(Denatured)

Catalog # : H00001457-T02

規格 : [ 100 uL ]

[List All](#)

### Specification

**Transfected Cell Line:** 293T

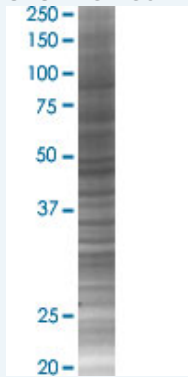
**Plasmid:** pCMV-CSNK2A1 full-length

**Host:** Human

**Theoretical MW (kDa):** 45.1

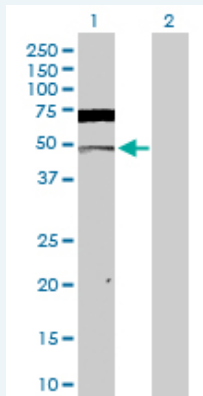
**Quality Control Testing:** Transient overexpression cell lysate was tested with Anti-CSNK2A1 antibody ([H00001457-D01P](#)) by Western Blots.

#### SDS-PAGE Gel



CSNK2A1 transfected lysate.

#### Western Blot



Lane 1: CSNK2A1 transfected lysate ( 45.10 KDa)

Lane 2: Non-transfected lysate.

**Storage Buffer:** 1X Sample Buffer (50 mM Tris-HCl, 2% SDS, 10% glycerol, 300 mM 2-mercaptoethanol, 0.01% Bromophenol blue)

**Storage Instruction:** Store at -80°C. Aliquot to avoid repeated freezing and thawing.

**MSDS:**  [Download](#)

### Applications

### Application Image

Western Blot

## Western Blot

### Gene Information

Entrez GeneID: [1457](#)

GeneBank Accession#: [NM\\_001895.3](#)

Protein Accession#: [NP\\_001886.1](#)

Gene Name: CSNK2A1

Gene Alias: CK2A1,CKII

Gene Description: casein kinase 2, alpha 1 polypeptide

Omim ID: [115440](#)

Gene Ontology: [Hyperlink](#)

**Gene Summary:** Casein kinase II is a serine/threonine protein kinase that phosphorylates acidic proteins such as casein. The kinase exists as a tetramer and is composed of an alpha, an alpha-prime, and two beta subunits. The alpha subunits contain the catalytic activity while the beta subunits undergo autophosphorylation. The protein encoded by this gene represents the alpha subunit. While this gene is found on chromosome 20, a related transcribed pseudogene is found on chromosome 11. Three transcript variants encoding two different proteins have been found for this gene. [provided by RefSeq]

**Other Designations:** CK2 catalytic subunit  
alpha,OTTHUMP00000029925,OTTHUMP00000029926,casein kinase II  
alpha 1 subunit,casein kinase II alpha subunit,protein kinase CK2

### Gene Pathway

[Adherens junction](#) [Tight junction](#) [Wnt signaling pathway](#)

### Related Disease

[Bipolar Disorder](#) [Cardiovascular Diseases](#) [Colorectal Neoplasms](#) [Diabetes Mellitus, Type 2](#)  
[Edema](#) [Genetic Predisposition to Disease](#) [Psychiatric Status Rating Scales](#)  
[Psychotic Disorders](#) [Schizophrenia](#)