



# SZABO SCANDIC

Part of Europa Biosite

## Produktinformation



Forschungsprodukte & Biochemikalien



Zellkultur & Verbrauchsmaterial



Diagnostik & molekulare Diagnostik



Laborgeräte & Service

Weitere Information auf den folgenden Seiten!  
See the following pages for more information!



### Lieferung & Zahlungsart

siehe unsere [Liefer- und Versandbedingungen](#)

### Zuschläge

- Mindermengenzuschlag
- Trockeneiszuschlag
- Gefahrgutzuschlag
- Expressversand

### SZABO-SCANDIC HandelsgmbH

Quellenstraße 110, A-1100 Wien

T. +43(0)1 489 3961-0

F. +43(0)1 489 3961-7

[mail@szabo-scandic.com](mailto:mail@szabo-scandic.com)

[www.szabo-scandic.com](http://www.szabo-scandic.com)

[linkedin.com/company/szaboscandic](https://www.linkedin.com/company/szaboscandic) 



## CSNK2A2 monoclonal antibody (M01), clone 4F2

Catalog # : H00001459-M01

規格 : [ 100 ug ]

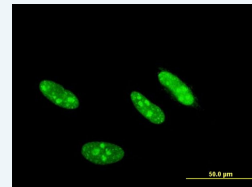
[List All](#)

### Specification

<b>Product Description:</b>	Mouse monoclonal antibody raised against a full length recombinant CSNK2A2.
<b>Immunogen:</b>	CSNK2A2 (AAH08812.1, 1 a.a. ~ 350 a.a) full-length recombinant protein with GST tag. MW of the GST tag alone is 26 KDa.
<b>Sequence:</b>	MPGPAAGSRARVYAEVNSLRSREYWDYEAHVPSWGNQDDYQLVLRKLG RGKYSEVFEAINITNNERVVVKILKPVKKKKIKREVKILENLRGGTNIKLI IDTVKDPVSKTPALVFEYINNTDFKQLYQILTDFFDIRFYMYELLKALDYCHSKGI MHRDVKPHNVIMIDHQKQLRLIDWGLAEFYHPAQEYNVRVASRYFKGPE LLVDYQMYDYSLDMWVSLGCM LASMIFRREPFFHGQDNYDQLVRIAKVL GTEELYGYLKKYHIDLDPHFNDILGQHSRKRWENFIHSENRLVLSPEALDL LDKLLRYDHQQRLTAKEAMEHPYFYPVVKESQPCADNAVLSSGLTAAR
<b>Host:</b>	Mouse
<b>Reactivity:</b>	Human
<b>Isotype:</b>	IgG2b Kappa
<b>Quality Control Testing:</b>	Antibody Reactive Against Recombinant Protein.
<b>Storage Buffer:</b>	In 1x PBS, pH 7.4
<b>Storage Instruction:</b>	Store at -20°C or lower. Aliquot to avoid repeated freezing and thawing.
<b>MSDS:</b>	 <a href="#">Download</a>
<b>Datasheet:</b>	 <a href="#">Download</a>

### Application Image

Immunofluorescence

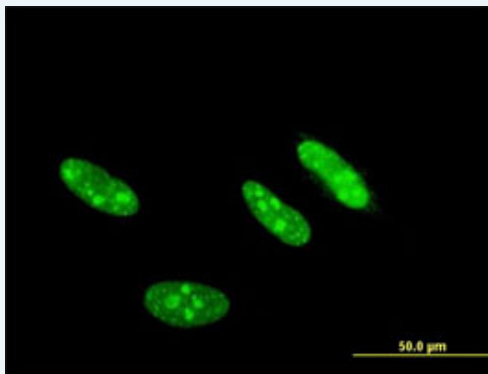



 [enlarge](#)

ELISA

### Applications

#### Immunofluorescence



 [enlarge this image](#)

Immunofluorescence of monoclonal antibody to CSNK2A2 on HeLa cell . [antibody concentration 10 ug/ml]

 [Protocol Download](#)

ELISA

## Gene Information

---

Entrez GeneID: [1459](#)

---

GeneBank  
Accession#: [BC008812](#)

---

Protein  
Accession#: [AAH08812.1](#)

---

Gene Name: CSNK2A2

---

Gene Alias: CK2A2, CSNK2A1, FLJ43934

---

Gene  
Description: casein kinase 2, alpha prime polypeptide

---

Omim ID: [115442](#)

---

Gene Ontology: [Hyperlink](#)

---

Other  
Designations: -

---

## Gene Pathway

---

[Adherens junction](#) [Tight junction](#) [Wnt signaling pathway](#)

## Related Disease

---

[Cardiovascular Diseases](#) [Diabetes Mellitus, Type 2](#) [Edema](#) [Sleep](#) [Tobacco Use Disorder](#)

---

[服務條款](#) | [隱私權政策](#) | [著作及商標](#) | [網站地圖](#)

©2016 亞諾法生技股份有限公司 Abnova Corporation. 版權所有.