



SZABO SCANDIC

Part of Europa Biosite

Produktinformation



Forschungsprodukte & Biochemikalien



Zellkultur & Verbrauchsmaterial



Diagnostik & molekulare Diagnostik



Laborgeräte & Service

Weitere Information auf den folgenden Seiten!
See the following pages for more information!



Lieferung & Zahlungsart

siehe unsere [Liefer- und Versandbedingungen](#)

Zuschläge

- Mindermengenzuschlag
- Trockeneiszuschlag
- Gefahrgutzuschlag
- Expressversand

SZABO-SCANDIC HandelsgmbH

Quellenstraße 110, A-1100 Wien

T. +43(0)1 489 3961-0

F. +43(0)1 489 3961-7

mail@szabo-scandic.com

www.szabo-scandic.com

[linkedin.com/company/szaboscandic](https://www.linkedin.com/company/szaboscandic) 

CSNK2B 293T Cell Transient Overexpression Lysate(Denatured)

Catalog # : H00001460-T01

規格 : [100 uL]

[List All](#)

Specification

Transfected Cell Line: 293T

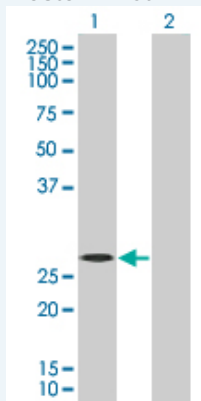
Plasmid: pCMV-CSNK2B full-length

Host: Human

Theoretical MW (kDa): 23.76

Quality Control Testing: Transient overexpression cell lysate was tested with Anti-CSNK2B antibody ([H00001460-B01](#)) by Western Blots.

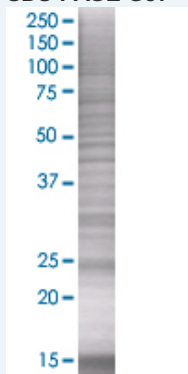
Western Blot



Lane 1: CSNK2B transfected lysate (24.9 KDa)

Lane 2: Non-transfected lysate.

SDS-PAGE Gel



CSNK2B transfected lysate.

Storage Buffer: 1X Sample Buffer (50 mM Tris-HCl, 2% SDS, 10% glycerol, 300 mM 2-mercaptoethanol, 0.01% Bromophenol blue)

Storage Instruction: Store at -80°C. Aliquot to avoid repeated freezing and thawing.

MSDS: [Download](#)

Applications

Application Image

Western Blot

Western Blot

Gene Information

Entrez GeneID: [1460](#)

GeneBank Accession#: [NM_001320](#)

Protein Accession#: [NP_001311](#)

Gene Name: CSNK2B

Gene Alias: CK2B,CK2N,CSK2B,G5A,MGC138222,MGC138224

Gene Description: casein kinase 2, beta polypeptide

Omim ID: [115441](#)

Gene Ontology: [Hyperlink](#)

Gene Summary: This gene encodes the beta subunit of casein kinase II, a ubiquitous protein kinase which regulates metabolic pathways, signal transduction, transcription, translation, and replication. The enzyme is composed of three subunits, alpha, alpha prime and beta, which form a tetrameric holoenzyme. The alpha and alpha prime subunits are catalytic, while the beta subunit serves regulatory functions. The enzyme localizes to the endoplasmic reticulum and the Golgi apparatus. [provided by RefSeq]

Other Designations: Casein kinase II beta subunit,OTTHUMP00000029060,OTTHUMP00000029063,OTTHUMP0000029064,alternative name: G5a, phosvitin,phosvitin

Gene Pathway

[Adherens junction](#) [Tight junction](#) [Wnt signaling pathway](#)

Related Disease

[Arthritis, Rheumatoid](#) [Cardiovascular Diseases](#) [Diabetes Mellitus, Type 2](#) [Edema](#) [Genetic Predisposition to Disease](#) [Lupus Erythematosus, Systemic](#) [Osteoarthritis](#)

[服務條款](#) | [隱私權政策](#) | [著作及商標](#) | [網站地圖](#)

©2016 亞諾法生技股份有限公司 Abnova Corporation. 版權所有.