



# SZABO SCANDIC

Part of Europa Biosite

## Produktinformation



Forschungsprodukte & Biochemikalien



Zellkultur & Verbrauchsmaterial



Diagnostik & molekulare Diagnostik



Laborgeräte & Service

Weitere Information auf den folgenden Seiten!  
See the following pages for more information!



### Lieferung & Zahlungsart

siehe unsere [Liefer- und Versandbedingungen](#)

### Zuschläge

- Mindermengenzuschlag
- Trockeneiszuschlag
- Gefahrgutzuschlag
- Expressversand

### SZABO-SCANDIC HandelsgmbH

Quellenstraße 110, A-1100 Wien

T. +43(0)1 489 3961-0

F. +43(0)1 489 3961-7

[mail@szabo-scandic.com](mailto:mail@szabo-scandic.com)

[www.szabo-scandic.com](http://www.szabo-scandic.com)

[linkedin.com/company/szaboscandic](https://www.linkedin.com/company/szaboscandic) 

## CSNK2B 293T Cell Transient Overexpression Lysate(Denatured)

Catalog # : H00001460-T02

規格 : [ 100 uL ]

[List All](#)

### Specification

**Transfected Cell Line:** 293T

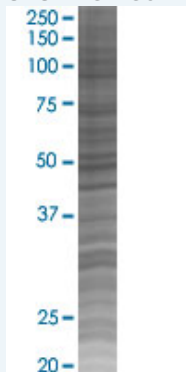
**Plasmid:** pCMV-CSNK2B full-length

**Host:** Human

**Theoretical MW (kDa):** 24.9

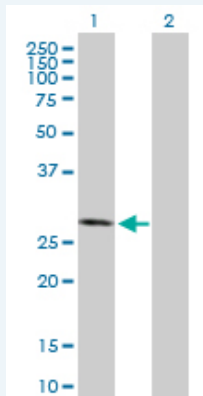
**Quality Control Testing:** Transient overexpression cell lysate was tested with Anti-CSNK2B antibody ([H00001460-B01P](#)) by Western Blots.

#### SDS-PAGE Gel



CSNK2B transfected lysate.

#### Western Blot



Lane 1: CSNK2B transfected lysate ( 24.90 KDa)

Lane 2: Non-transfected lysate.

**Storage Buffer:** 1X Sample Buffer (50 mM Tris-HCl, 2% SDS, 10% glycerol, 300 mM 2-mercaptoethanol, 0.01% Bromophenol blue)

**Storage Instruction:** Store at -80°C. Aliquot to avoid repeated freezing and thawing.

**MSDS:**  [Download](#)

### Applications

## Western Blot

### Gene Information

**Entrez GeneID:** [1460](#)

**GeneBank  
Accession#:** [NM\\_001320](#)

**Protein  
Accession#:** [NP\\_001311.3](#)

**Gene Name:** CSNK2B

**Gene Alias:** CK2B,CK2N,CSK2B,G5A,MGC138222,MGC138224

**Gene  
Description:** casein kinase 2, beta polypeptide

**Omim ID:** [115441](#)

**Gene Ontology:** [Hyperlink](#)

**Gene Summary:** This gene encodes the beta subunit of casein kinase II, a ubiquitous protein kinase which regulates metabolic pathways, signal transduction, transcription, translation, and replication. The enzyme is composed of three subunits, alpha, alpha prime and beta, which form a tetrameric holoenzyme. The alpha and alpha prime subunits are catalytic, while the beta subunit serves regulatory functions. The enzyme localizes to the endoplasmic reticulum and the Golgi apparatus. [provided by RefSeq]

**Other  
Designations:** Casein kinase II beta subunit,OTTHUMP00000029060,OTTHUMP00000029063,OTTHUMP0000029064,alternative name: G5a, phosvitin,phosvitin

### Gene Pathway

[Adherens junction](#) [Tight junction](#) [Wnt signaling pathway](#)

### Related Disease

[Arthritis, Rheumatoid](#) [Cardiovascular Diseases](#) [Diabetes Mellitus, Type 2](#) [Edema](#)  
[Genetic Predisposition to Disease](#) [Lupus Erythematosus, Systemic](#) [Osteoarthritis](#)

[服務條款](#) | [隱私權政策](#) | [著作及商標](#) | [網站地圖](#)

©2016 亞諾法生技股份有限公司 Abnova Corporation. 版權所有.