



# SZABO SCANDIC

Part of Europa Biosite

## Produktinformation



Forschungsprodukte & Biochemikalien



Zellkultur & Verbrauchsmaterial



Diagnostik & molekulare Diagnostik



Laborgeräte & Service

Weitere Information auf den folgenden Seiten!  
See the following pages for more information!



### Lieferung & Zahlungsart

siehe unsere [Liefer- und Versandbedingungen](#)

### Zuschläge

- Mindermengenzuschlag
- Trockeneiszuschlag
- Gefahrgutzuschlag
- Expressversand

### SZABO-SCANDIC HandelsgmbH

Quellenstraße 110, A-1100 Wien

T. +43(0)1 489 3961-0

F. +43(0)1 489 3961-7

[mail@szabo-scandic.com](mailto:mail@szabo-scandic.com)

[www.szabo-scandic.com](http://www.szabo-scandic.com)

[linkedin.com/company/szaboscandic](https://www.linkedin.com/company/szaboscandic) 

## CSPG2 293T Cell Transient Overexpression Lysate(Denatured)

Catalog # : H00001462-T02

規格 : [ 100 uL ]

List All

### Specification

**Transfected Cell Line:** 293T

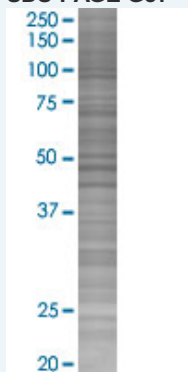
**Plasmid:** pCMV-CSPG2 full-length

**Host:** Human

**Theoretical MW (kDa):** 39.3

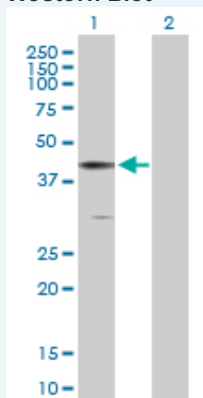
**Quality Control Testing:** Transient overexpression cell lysate was tested with Anti-CSPG2 antibody ([H00001462-B01](#)) by Western Blots.

#### SDS-PAGE Gel



VCAN transfected lysate.

#### Western Blot



Lane 1: VCAN transfected lysate ( 39.30 KDa)

Lane 2: Non-transfected lysate.

**Storage Buffer:** 1X Sample Buffer (50 mM Tris-HCl, 2% SDS, 10% glycerol, 300 mM 2-mercaptoethanol, 0.01% Bromophenol blue)

**Storage Instruction:** Store at -80°C. Aliquot to avoid repeated freezing and thawing.

**MSDS:**  [Download](#)

### Applications

## Western Blot

### Gene Information

**Entrez GeneID:** [1462](#)

**GeneBank Accession#:** [BC050524.1](#)

**Protein Accession#:** [AAH50524.1](#)

**Gene Name:** VCAN

**Gene Alias:** CSPG2,DKFZp686K06110,ERVR,PG-M,WGN,WGN1

**Gene Description:** versican

**Omim ID:** [118661](#), [143200](#)

**Gene Ontology:** [Hyperlink](#)

**Gene Summary:** This gene is a member of the aggrecan/versican proteoglycan family. The protein encoded is a large chondroitin sulfate proteoglycan and is a major component of the extracellular matrix. This protein is involved in cell adhesion, proliferation, proliferation, migration and angiogenesis and plays a central role in tissue morphogenesis and maintenance. Mutations in this gene are the cause of Wagner syndrome type 1. Multiple transcript variants encoding different isoforms have been found for this gene. [provided by RefSeq]

**Other Designations:** Wagner syndrome (erosive vitreoretinopathy),chondroitin sulfate proteoglycan 2 (versican),versican proteoglycan

### Gene Pathway

[Cell adhesion molecules \(CAMs\)](#)

### Related Disease

[Aortic Aneurysm](#), [Abdominal Chorioamnionitis Fetal Membranes](#), [Premature Rupture Genetic Predisposition to Disease Intracranial Aneurysm Obstetric Labor](#), [Premature Pre-Eclampsia](#), [Premature Birth](#), [Stomach Neoplasms](#), [Tobacco Use Disorder](#)

[服務條款](#) | [隱私權政策](#) | [著作及商標](#) | [網站地圖](#)

©2016 亞諾法生技股份有限公司 Abnova Corporation. 版權所有.