



# SZABO SCANDIC

Part of Europa Biosite

## Produktinformation



Forschungsprodukte & Biochemikalien



Zellkultur & Verbrauchsmaterial



Diagnostik & molekulare Diagnostik



Laborgeräte & Service

Weitere Information auf den folgenden Seiten!  
See the following pages for more information!



### Lieferung & Zahlungsart

siehe unsere [Liefer- und Versandbedingungen](#)

### Zuschläge

- Mindermengenzuschlag
- Trockeneiszuschlag
- Gefahrgutzuschlag
- Expressversand

### SZABO-SCANDIC HandelsgmbH

Quellenstraße 110, A-1100 Wien

T. +43(0)1 489 3961-0

F. +43(0)1 489 3961-7

[mail@szabo-scandic.com](mailto:mail@szabo-scandic.com)

[www.szabo-scandic.com](http://www.szabo-scandic.com)

[linkedin.com/company/szaboscandic](https://www.linkedin.com/company/szaboscandic) 

## CSRP1 polyclonal antibody (A01)

Catalog # : H00001465-A01

規格 : [ 50 uL ]

[List All](#)

### Specification

**Product Description:** Mouse polyclonal antibody raised against a partial recombinant CSRP1.

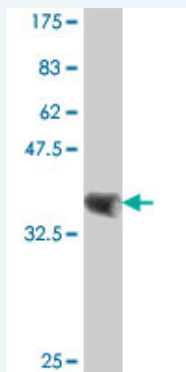
**Immunogen:** CSRP1 (NP\_004069, 94 a.a. ~ 192 a.a) partial recombinant protein with GST tag.

**Sequence:** EAPGHRPTTNPNASKFAQKIGGSERCPRCSQAVYAAEKVIGAGKSWHKA  
CFRCAKCGKGLESTTLADKDG EYCKGCYAKNFGPKGF GFGQGAGALV  
HS

**Host:** Mouse

**Reactivity:** Human

**Quality Control Testing:** Antibody Reactive Against Recombinant Protein.



Western Blot detection against Immunogen (37 KDa) .

**Storage Buffer:** 50 % glycerol

**Storage Instruction:** Store at -20°C or lower. Aliquot to avoid repeated freezing and thawing.

**MSDS:** [Download](#)

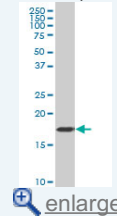
**Datasheet:** [Download](#)

### Applications

Western Blot (Cell lysate)

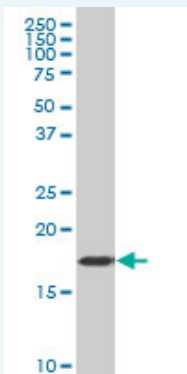
### Application Image

Western Blot (Cell lysate)



Western Blot (Recombinant protein)

ELISA



CSRP1 polyclonal antibody (A01), Lot # 060501JCS1 Western Blot analysis of CSRP1 expression in HepG2 ( Cat # L019V1 ).

 [Protocol Download](#)

#### Western Blot (Recombinant protein)

 [Protocol Download](#)

#### ELISA

#### Gene Information

**Entrez GeneID:** [1465](#)

**GeneBank** [NM\\_004078](#)

**Accession#:**

**Protein** [NP\\_004069](#)

**Accession#:**

**Gene Name:** CSRP1

**Gene Alias:** CRP,CRP1,CSRP,CYRP,D1S181E,DKFZp686M148

**Gene** cysteine and glycine-rich protein 1

**Description:**

**Omim ID:** [123876](#)

**Gene Ontology:** [Hyperlink](#)

**Gene Summary:** This gene encodes a member of the cysteine-rich protein (CSRP) family. This gene family includes a group of LIM domain proteins, which may be involved in regulatory processes important for development and cellular differentiation. The LIM/double zinc-finger motif found in this gene product occurs in proteins with critical functions in gene regulation, cell growth, and somatic differentiation. [provided by RefSeq]

**Other** LIM-domain protein,OTTHUMP00000033921,cysteine-rich protein

**Designations:**

#### Related Disease

[Tobacco Use Disorder](#)