



SZABO SCANDIC

Part of Europa Biosite

Produktinformation



Forschungsprodukte & Biochemikalien



Zellkultur & Verbrauchsmaterial



Diagnostik & molekulare Diagnostik



Laborgeräte & Service

Weitere Information auf den folgenden Seiten!
See the following pages for more information!



Lieferung & Zahlungsart

siehe unsere [Liefer- und Versandbedingungen](#)

Zuschläge

- Mindermengenzuschlag
- Trockeneiszuschlag
- Gefahrgutzuschlag
- Expressversand

SZABO-SCANDIC HandelsgmbH

Quellenstraße 110, A-1100 Wien

T. +43(0)1 489 3961-0

F. +43(0)1 489 3961-7

mail@szabo-scandic.com

www.szabo-scandic.com

[linkedin.com/company/szaboscandic](https://www.linkedin.com/company/szaboscandic) 

CSRP2 polyclonal antibody (A01)

Catalog # : H00001466-A01

規格 : [50 uL]

List All

Specification

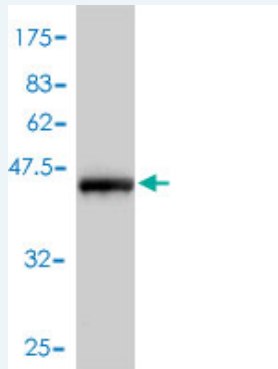
Product Description:	Mouse polyclonal antibody raised against a full-length recombinant CSRP2.
Immunogen:	CSRP2 (AAH00992, 1 a.a. ~ 193 a.a) full-length recombinant protein with GST tag.
Sequence:	MPVWGGGNKCGACGRTVYHAEVQCDGRSFHRCCLCMVCRKNLDS TTVAIHDEEYCKSCYGGKYGPKGYGYGQGAGTLNMDRGERLGIKPEVS QPHRPTTNPNTSKFAQKYGGAEKCSRCGDSVYAAEKIIGAGKPWHKNCF RCAKCGKSLESTTLTEKEGEYCKGCYAKNFGPKGFGYGQGAGALVHA Q
Host:	Mouse
Reactivity:	Human

Application Image

Western Blot (Recombinant protein)

ELISA

Quality Control Testing: Antibody Reactive Against Recombinant Protein.



Western Blot detection against Immunogen (47.34 KDa) .

Storage Buffer: 50 % glycerol

Storage Instruction: Store at -20°C or lower. Aliquot to avoid repeated freezing and thawing.

MSDS: [Download](#)

Datasheet: [Download](#)

Applications

Western Blot (Recombinant protein)

[Protocol Download](#)

ELISA

Gene Information

Entrez GeneID: [1466](#)

**GeneBank
Accession#:** [BC000992](#)

**Protein
Accession#:** [AAH00992](#)

Gene Name: CSRP2

Gene Alias: CRP2,LMO5,SmLIM

**Gene
Description:** cysteine and glycine-rich protein 2

Omim ID: [601871](#)

Gene Ontology: [Hyperlink](#)

Gene Summary: CSRP2 is a member of the CSRP family of genes, encoding a group of LIM domain proteins, which may be involved in regulatory processes important for development and cellular differentiation. CRP2 contains two copies of the cysteine-rich amino acid sequence motif (LIM) with putative zinc-binding activity, and may be involved in regulating ordered cell growth. Other genes in the family include CSRP1 and CSRP3. [provided by RefSeq]

**Other
Designations:** LIM domain only 5, smooth muscle

[服務條款](#) | [隱私權政策](#) | [著作及商標](#) | [網站地圖](#)

©2016 亞諾法生技股份有限公司 Abnova Corporation. 版權所有.