



# SZABO SCANDIC

Part of Europa Biosite

## Produktinformation



Forschungsprodukte & Biochemikalien



Zellkultur & Verbrauchsmaterial



Diagnostik & molekulare Diagnostik



Laborgeräte & Service

Weitere Information auf den folgenden Seiten!  
See the following pages for more information!



### Lieferung & Zahlungsart

siehe unsere [Liefer- und Versandbedingungen](#)

### Zuschläge

- Mindermengenzuschlag
- Trockeneiszuschlag
- Gefahrgutzuschlag
- Expressversand

### SZABO-SCANDIC HandelsgmbH

Quellenstraße 110, A-1100 Wien

T. +43(0)1 489 3961-0

F. +43(0)1 489 3961-7

[mail@szabo-scandic.com](mailto:mail@szabo-scandic.com)

[www.szabo-scandic.com](http://www.szabo-scandic.com)

[linkedin.com/company/szaboscandic](https://www.linkedin.com/company/szaboscandic) 

## CST3 purified MaxPab rabbit polyclonal antibody (D01P) MaxPab®

Catalog # : H00001471-D01P

規格 : [ 100 ug ]

[List All](#)

### Specification

**Product Description:** Rabbit polyclonal antibody raised against a full-length human CST3 protein.

**Immunogen:** CST3 (NP\_000090.1, 1 a.a. ~ 146 a.a) full-length human protein.

**Sequence:** MAGPLRAPLLLLLAILAVALAVSPAAGSSPGKPPRLVGGPMDASVEEEGV  
RRALDFAVGEYKASNDMYHSRALQVVRARKQIVAGVNYFLDVELGRRT  
CTKTQPNLDNCPFHDQPHLKRKAFCSFQIYAVPWQGTMTLSKSTCQDA

**Host:** Rabbit

**Reactivity:** Human

**Quality Control Testing:** Antibody reactive against mammalian transfected lysate.

**Storage Buffer:** In 1x PBS, pH 7.4

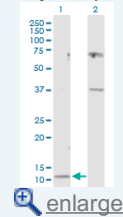
**Storage Instruction:** Store at -20°C or lower. Aliquot to avoid repeated freezing and thawing.

**MSDS:** [Download](#)

**Datasheet:** [Download](#)

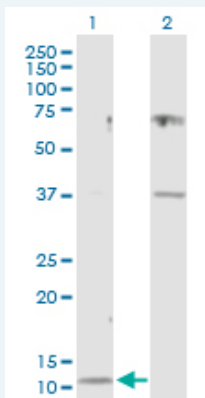
### Application Image

Western Blot (Transfected lysate)



### Applications

Western Blot (Transfected lysate)



Western Blot analysis of CST3 expression in transfected 293T cell line ([H00001471-T03](#)) by CST3 MaxPab polyclonal antibody.

Lane 1: CST3 transfected lysate(15.80 kDa).

Lane 2: Non-transfected lysate.

[Protocol Download](#)

### Gene Information

**Entrez GeneID:** [1471](#)

**GeneBank Accession#:** [NM\\_000099.2](#)

**Protein Accession#:** [NP\\_000090.1](#)

**Gene Name:** CST3

**Gene Alias:** ARMD11,MGC117328

**Gene Description:** cystatin C

**Omim ID:** [105150](#), [604312](#)

**Gene Ontology:** [Hyperlink](#)

**Gene Summary:** The cystatin superfamily encompasses proteins that contain multiple cystatin-like sequences. Some of the members are active cysteine protease inhibitors, while others have lost or perhaps never acquired this inhibitory activity. There are three inhibitory families in the superfamily, including the type 1 cystatins (stefins), type 2 cystatins and the kininogens. The type 2 cystatin proteins are a class of cysteine proteinase inhibitors found in a variety of human fluids and secretions, where they appear to provide protective functions. The cystatin locus on chromosome 20 contains the majority of the type 2 cystatin genes and pseudogenes. This gene is located in the cystatin locus and encodes the most abundant extracellular inhibitor of cysteine proteases, which is found in high concentrations in biological fluids and is expressed in virtually all organs of the body. A mutation in this gene has been associated with amyloid angiopathy. Expression of this protein in vascular wall smooth muscle cells is severely reduced in both atherosclerotic and aneurysmal aortic lesions, establishing its role in vascular disease. [provided by RefSeq]

**Other Designations:** OTTHUMP00000030440,OTTHUMP00000164181,OTTHUMP00000164182,BA218C14.4 (cystatin C),cystatin 3,cystatin C (amyloid angiopathy and cerebral hemorrhage),gamma-trace,neuroendocrine basic polypeptide,post-gamma-globulin

#### Related Disease

[Albuminuria](#) [Alzheimer Disease](#) [Alzheimer disease](#) [Amnesia](#) [Amyloidosis](#) [Amyotrophic Lateral Sclerosis](#) [Amyotrophic lateral sclerosis](#) [Angina](#) [Unstable Atherosclerosis](#) [Cardiovascular Diseases](#) [Cognition Disorders](#) [Coronary Disease](#) [Dementia](#) [Vascular Diabetes Complications](#) [Frontotemporal Lobar Degeneration](#) [Genetic Predisposition to Disease](#) [Lewy Body Disease](#) [Macular Degeneration](#) [Mental Status Schedule](#)

... see more