



# SZABO SCANDIC

Part of Europa Biosite

## Produktinformation



Forschungsprodukte & Biochemikalien



Zellkultur & Verbrauchsmaterial



Diagnostik & molekulare Diagnostik



Laborgeräte & Service

Weitere Information auf den folgenden Seiten!  
See the following pages for more information!



### Lieferung & Zahlungsart

siehe unsere [Liefer- und Versandbedingungen](#)

### Zuschläge

- Mindermengenzuschlag
- Trockeneiszuschlag
- Gefahrgutzuschlag
- Expressversand

### SZABO-SCANDIC HandelsgmbH

Quellenstraße 110, A-1100 Wien

T. +43(0)1 489 3961-0

F. +43(0)1 489 3961-7

[mail@szabo-scandic.com](mailto:mail@szabo-scandic.com)

[www.szabo-scandic.com](http://www.szabo-scandic.com)

[linkedin.com/company/szaboscandic](https://www.linkedin.com/company/szaboscandic) 

## CSTB MaxPab mouse polyclonal antibody (B02) MaxPab®

Catalog # : H00001476-B02

規格 : [ 50 uL ]

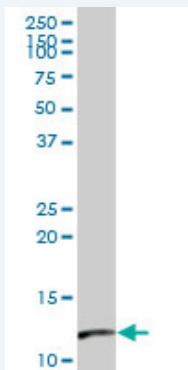
[List All](#)

### Specification

<b>Product Description:</b>	Mouse polyclonal antibody raised against a full-length human CSTB protein.
<b>Immunogen:</b>	CSTB (NP_000091.1, 1 a.a. ~ 98 a.a) full-length human protein.
<b>Sequence:</b>	MMCGAPSATQPATAETQHIADQVRSQLEEKENKKFPVFKAVSFKQVVA GTNYFIKVVHVGDEDFVHLRVFQSLPHENKPLTLSNYQTNKAKHDELTYP
<b>Host:</b>	Mouse
<b>Reactivity:</b>	Human
<b>Quality Control Testing:</b>	Antibody reactive against mammalian transfected lysate.
<b>Storage Buffer:</b>	No additive
<b>Storage Instruction:</b>	Store at -20°C or lower. Aliquot to avoid repeated freezing and thawing.
<b>Note:</b>	For IHC and IF applications, antibody purification with Protein A will be needed prior to use.
<b>MSDS:</b>	<a href="#">Download</a>
<b>Datasheet:</b>	<a href="#">Download</a>

### Applications

#### Western Blot (Tissue lysate)



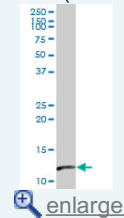
CSTB MaxPab polyclonal antibody. Western Blot analysis of CSTB expression in human placenta.

[Protocol Download](#)

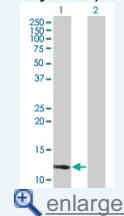
#### Western Blot (Transfected lysate)

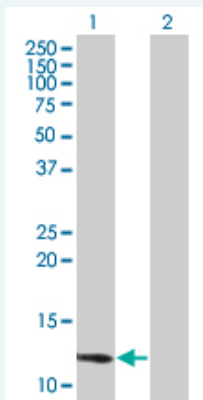
### Application Image

#### Western Blot (Tissue lysate)



#### Western Blot (Transfected lysate)





Western Blot analysis of CSTB expression in transfected 293T cell line (H00001476-T02) by CSTB MaxPab polyclonal antibody.

Lane 1: CSTB transfected lysate(10.78 KDa).  
Lane 2: Non-transfected lysate.

 [Protocol Download](#)

## Gene Information

**Entrez GeneID:** [1476](#)

**GeneBank Accession#:** [NM\\_000100.2](#)

**Protein Accession#:** [NP\\_000091.1](#)

**Gene Name:** CSTB

**Gene Alias:** CST6,EPM1,PME,STFB

**Gene Description:** cystatin B (stefin B)

**Omim ID:** [254800](#), [601145](#)

**Gene Ontology:** [Hyperlink](#)

**Gene Summary:** The cystatin superfamily encompasses proteins that contain multiple cystatin-like sequences. Some of the members are active cysteine protease inhibitors, while others have lost or perhaps never acquired this inhibitory activity. There are three inhibitory families in the superfamily, including the type 1 cystatins (stefins), type 2 cystatins and kininogens. This gene encodes a stefin that functions as an intracellular thiol protease inhibitor. The protein is able to form a dimer stabilized by noncovalent forces, inhibiting papain and cathepsins I, h and b. The protein is thought to play a role in protecting against the proteases leaking from lysosomes. Evidence indicates that mutations in this gene are responsible for the primary defects in patients with progressive myoclonic epilepsy (EPM1). [provided by RefSeq]

**Other Designations:** CPI-B,cystatin B,liver thiol proteinase inhibitor,stefin B

## Related Disease

[Cardiovascular Diseases](#) [Diabetes Mellitus, Type 2](#) [Edema](#) [Epilepsy](#) [Epilepsy](#)