



SZABO SCANDIC

Part of Europa Biosite

Produktinformation



Forschungsprodukte & Biochemikalien



Zellkultur & Verbrauchsmaterial



Diagnostik & molekulare Diagnostik



Laborgeräte & Service

Weitere Information auf den folgenden Seiten!
See the following pages for more information!



Lieferung & Zahlungsart

siehe unsere [Liefer- und Versandbedingungen](#)

Zuschläge

- Mindermengenzuschlag
- Trockeneiszuschlag
- Gefahrgutzuschlag
- Expressversand

SZABO-SCANDIC HandelsgmbH

Quellenstraße 110, A-1100 Wien

T. +43(0)1 489 3961-0

F. +43(0)1 489 3961-7

mail@szabo-scandic.com

www.szabo-scandic.com

[linkedin.com/company/szaboscandic](https://www.linkedin.com/company/szaboscandic) 

CSTB purified MaxPab rabbit polyclonal antibody (D01P) MaxPab®

Catalog # : H00001476-D01P

規格 : [100 ug]

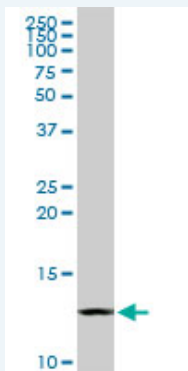
[List All](#)

Specification

Product Description:	Rabbit polyclonal antibody raised against a full-length human CSTB protein.
Immunogen:	CSTB (NP_000091.1, 1 a.a. ~ 98 a.a) full-length human protein.
Sequence:	MMCGAPSATQPATAETQHIADQVRSQLEEKENKKFPVFKAVSFKQVVA GTNYFIKVVHVGDEDFVHLRVFQSLPHENKPLTLSNYQTNKAKHDELTYP
Host:	Rabbit
Reactivity:	Human
Quality Control Testing:	Antibody reactive against mammalian transfected lysate.
Storage Buffer:	In 1x PBS, pH 7.4
Storage Instruction:	Store at -20°C or lower. Aliquot to avoid repeated freezing and thawing.
MSDS:	Download
Datasheet:	Download

Applications

Western Blot (Tissue lysate)



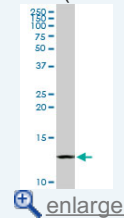
CSTB MaxPab rabbit polyclonal antibody. Western Blot analysis of CSTB expression in human placenta.

[Protocol Download](#)

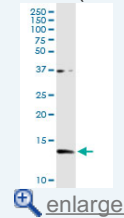
Western Blot (Cell lysate)

Application Image

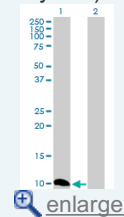
Western Blot (Tissue lysate)

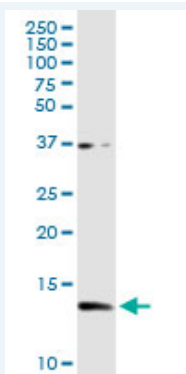


Western Blot (Cell lysate)



Western Blot (Transfected lysate)

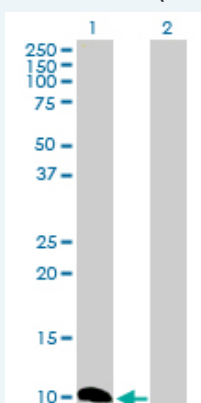




CSTB MaxPab rabbit polyclonal antibody. Western Blot analysis of CSTB expression in A-431.

 [Protocol Download](#)


Western Blot (Transfected lysate)



Western Blot analysis of CSTB expression in transfected 293T cell line ([H00001476-T02](#)) by CSTB MaxPab polyclonal antibody.

Lane 1: CSTB transfected lysate(11.10 KDa).

Lane 2: Non-transfected lysate.

 [Protocol Download](#)

Gene Information

Entrez GeneID: [1476](#)

GeneBank [NM_000100.2](#)

Accession#:

Protein [NP_000091.1](#)

Accession#:

Gene Name: CSTB

Gene Alias: CST6,EPM1,PME,STFB

Gene cystatin B (stefin B)

Description:

Omim ID: [254800](#), [601145](#)

Gene Ontology: [Hyperlink](#)

Gene Summary: The cystatin superfamily encompasses proteins that contain multiple cystatin-like sequences. Some of the members are active cysteine protease inhibitors, while others have lost or perhaps never acquired this inhibitory activity. There are three inhibitory families in the superfamily, including the type 1 cystatins (stefins), type 2 cystatins and kininogens. This gene encodes a stefin that functions as an intracellular thiol protease inhibitor. The protein is able to form a dimer stabilized by noncovalent forces, inhibiting papain and cathepsins I, h and b. The

protein is thought to play a role in protecting against the proteases leaking from lysosomes. Evidence indicates that mutations in this gene are responsible for the primary defects in patients with progressive myoclonic epilepsy (EPM1). [provided by RefSeq]

Other Designations: CPI-B, cystatin B, liver thiol proteinase inhibitor, stefin B

Related Disease

[Cardiovascular Diseases](#) [Diabetes Mellitus, Type 2](#) [Edema](#) [Epilepsy](#) [Epilepsy](#)

[服務條款](#) | [隱私權政策](#) | [著作及商標](#) | [網站地圖](#)

©2016 亞諾法生技股份有限公司 Abnova Corporation. 版權所有.