



SZABO SCANDIC

Part of Europa Biosite

Produktinformation



Forschungsprodukte & Biochemikalien



Zellkultur & Verbrauchsmaterial



Diagnostik & molekulare Diagnostik



Laborgeräte & Service

Weitere Information auf den folgenden Seiten!
See the following pages for more information!



Lieferung & Zahlungsart

siehe unsere [Liefer- und Versandbedingungen](#)

Zuschläge

- Mindermengenzuschlag
- Trockeneiszuschlag
- Gefahrgutzuschlag
- Expressversand

SZABO-SCANDIC HandelsgmbH

Quellenstraße 110, A-1100 Wien

T. +43(0)1 489 3961-0

F. +43(0)1 489 3961-7

mail@szabo-scandic.com

www.szabo-scandic.com

[linkedin.com/company/szaboscandic](https://www.linkedin.com/company/szaboscandic) 

CSTB monoclonal antibody (M02), clone M2-F1

Catalog # : H00001476-M02

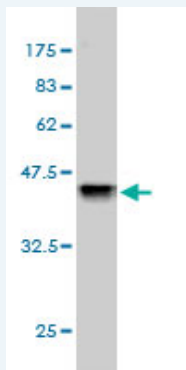
規格 : [100 ug]

[List All](#)

Specification

Product Description:	Mouse monoclonal antibody raised against a full length recombinant CSTB.
Immunogen:	CSTB (AAH03370.1, 1 a.a. ~ 98 a.a) full-length recombinant protein with GST tag. MW of the GST tag alone is 26 KDa.
Sequence:	MMCGAPSATQPATAETQHIADQVRSQLEEKENKKFPVFKAVSFKQVA GTNYFIKVVHVGDEDFVHLRVFQSLPHENKPLTLSNYQTNKAKHDELTYF
Host:	Mouse
Reactivity:	Human
Isotype:	IgG1 kappa

Quality Control Testing: Antibody Reactive Against Recombinant Protein.



Western Blot detection against Immunogen (36.52 KDa) .

Storage Buffer: In 1x PBS, pH 7.4

Storage Instruction: Store at -20°C or lower. Aliquot to avoid repeated freezing and thawing.

MSDS: [Download](#)

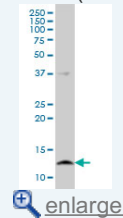
Datasheet: [Download](#)

Applications

Western Blot (Cell lysate)

Application Image

Western Blot (Cell lysate)



[enlarge](#)

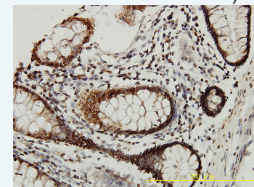
Western Blot (Transfected lysate)



[enlarge](#)

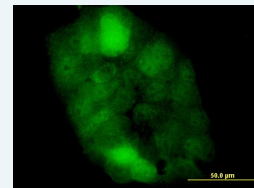
Western Blot (Recombinant protein)

Immunohistochemistry (Formalin/PFA-fixed paraffin-embedded sections)



[enlarge](#)

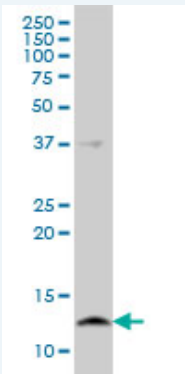
Immunofluorescence



[enlarge](#)

Sandwich ELISA (Recombinant protein)

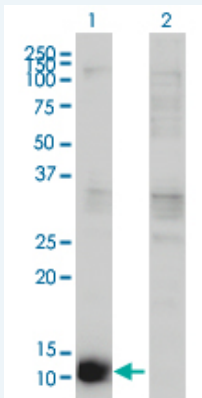
ELISA



CSTB monoclonal antibody (M02), clone M2-F1 Western Blot analysis of CSTB expression in A-431 (Cat # L015V1).

[Protocol Download](#)

Western Blot (Transfected lysate)



Western Blot analysis of CSTB expression in transfected 293T cell line by CSTB monoclonal antibody (M02), clone M2-F1.

Lane 1: CSTB transfected lysate(11 kDa).

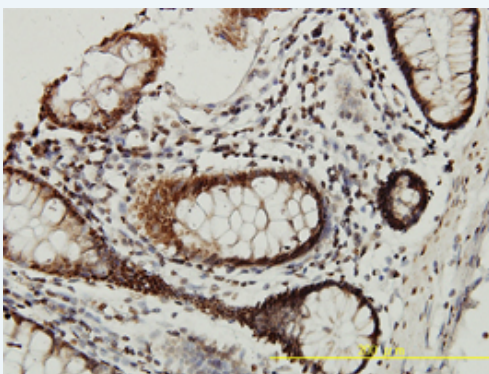
Lane 2: Non-transfected lysate.

[Protocol Download](#)

Western Blot (Recombinant protein)

[Protocol Download](#)

Immunohistochemistry (Formalin/PFA-fixed paraffin-embedded sections)

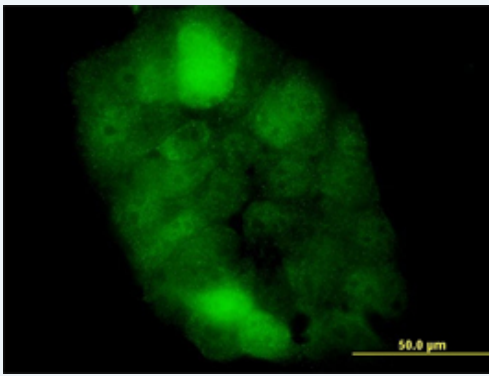


[enlarge this image](#)

Immunoperoxidase of monoclonal antibody to CSTB on formalin-fixed paraffin-embedded human colon tissue. [antibody concentration 5 ug/ml]

[Protocol Download](#)

Immunofluorescence



[enlarge this image](#)

Immunofluorescence of monoclonal antibody to CSTB on A-431 cell. [antibody concentration 10 ug/ml]

[Protocol Download](#)

Sandwich ELISA (Recombinant protein)

Detection limit for recombinant GST tagged CSTB is approximately 0.03ng/ml as a capture antibody.

[Protocol Download](#)

ELISA

Gene Information

Entrez GeneID: [1476](#)

GeneBank Accession#: [BC003370.1](#)

Protein Accession#: [AAH03370.1](#)

Gene Name: CSTB

Gene Alias: CST6,EPM1,PME,STFB

Gene Description: cystatin B (stefin B)

Omim ID: [254800](#), [601145](#)

Gene Ontology: [Hyperlink](#)

Gene Summary: The cystatin superfamily encompasses proteins that contain multiple cystatin-like sequences. Some of the members are active cysteine protease inhibitors, while others have lost or perhaps never acquired this inhibitory activity. There are three inhibitory families in the superfamily, including the type 1 cystatins (stefins), type 2 cystatins and kininogens. This gene encodes a stefin that functions as an intracellular thiol protease inhibitor. The protein is able to form a dimer stabilized by noncovalent forces, inhibiting papain and cathepsins I, h and b. The protein is thought to play a role in protecting against the proteases leaking from lysosomes. Evidence indicates that mutations in this gene are responsible for the primary defects in patients with progressive myoclonic epilepsy (EPM1). [provided by RefSeq]

Other Designations: CPI-B,cystatin B,liver thiol proteinase inhibitor,stefin B

Related Disease

[Cardiovascular Diseases](#) [Diabetes Mellitus](#), [Type 2](#) [Edema](#) [Epilepsy](#) [Epilepsy](#)

