



SZABO SCANDIC

Part of Europa Biosite

Produktinformation



Forschungsprodukte & Biochemikalien



Zellkultur & Verbrauchsmaterial



Diagnostik & molekulare Diagnostik



Laborgeräte & Service

Weitere Information auf den folgenden Seiten!
See the following pages for more information!



Lieferung & Zahlungsart

siehe unsere [Liefer- und Versandbedingungen](#)

Zuschläge

- Mindermengenzuschlag
- Trockeneiszuschlag
- Gefahrgutzuschlag
- Expressversand

SZABO-SCANDIC HandelsgmbH

Quellenstraße 110, A-1100 Wien

T. +43(0)1 489 3961-0

F. +43(0)1 489 3961-7

mail@szabo-scandic.com

www.szabo-scandic.com

[linkedin.com/company/szaboscandic](https://www.linkedin.com/company/szaboscandic) 

CSTF1 monoclonal antibody (M01), clone 1C6

Catalog # : H00001477-M01

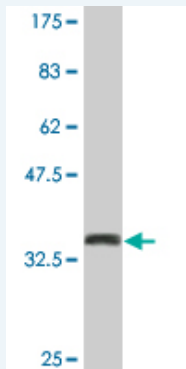
規格 : [100 ug]

[List All](#)

Specification

Product Description:	Mouse monoclonal antibody raised against a partial recombinant CSTF1.
Immunogen:	CSTF1 (NP_001315.1, 332 a.a. ~ 431 a.a) partial recombinant protein with GST tag. MW of the GST tag alone is 26 KDa.
Sequence:	LWEISTGRTLVRVTGAGLSGRQVHRTQAVFNHTEDYVLLPDERTISLCC WDSRTAERRNLLSLGHNNIVRCIVHSPTNPGFMTCSDDFRARFWYRRST TD
Host:	Mouse
Reactivity:	Human
Isotype:	IgG2a Kappa

Quality Control Testing: Antibody Reactive Against Recombinant Protein.



Western Blot detection against Immunogen (36.74 KDa) .

Storage Buffer: In 1x PBS, pH 7.4

Storage Instruction: Store at -20°C or lower. Aliquot to avoid repeated freezing and thawing.

MSDS: [Download](#)

Datasheet: [Download](#)

Applications

Western Blot (Recombinant protein)

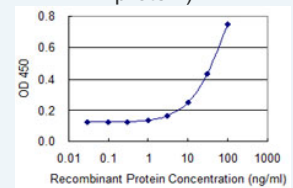
[Protocol Download](#)

Sandwich ELISA (Recombinant protein)

Application Image

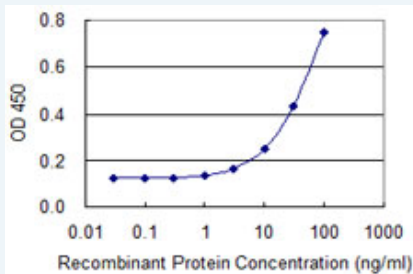
Western Blot (Recombinant protein)

Sandwich ELISA (Recombinant protein)



[enlarge](#)

ELISA



Detection limit for recombinant GST tagged CSTF1 is 1 ng/ml as a capture antibody.

 [Protocol Download](#)

ELISA

Gene Information

Entrez GeneID: [1477](#)

GeneBank [NM_001324](#)

Accession#:

Protein [NP_001315.1](#)

Accession#:

Gene Name: CSTF1

Gene Alias: CstF-50,CstFp50

Gene Description: cleavage stimulation factor, 3' pre-RNA, subunit 1, 50kDa

Omim ID: [600369](#)

Gene Ontology: [Hyperlink](#)

Gene Summary: This gene encodes one of three subunits which combine to form cleavage stimulation factor (CSTF). CSTF is involved in the polyadenylation and 3'end cleavage of pre-mRNAs. Similar to mammalian G protein beta subunits, this protein contains transducin-like repeats. Several transcript variants with different 5' UTR, but encoding the same protein, have been found for this gene. [provided by RefSeq]

Other Designations: CF-1 50 kDa subunit,CSTF 50 kDa

subunit,OTTHUMP00000031332,cleavage stimulation factor 50kDa subunit,cleavage stimulation factor subunit 1

Related Disease

[Breast cancer](#) [Breast Neoplasms](#) [Genetic Predisposition to Disease](#) [Lung Neoplasms](#) [Pulmonary Disease](#), [Chronic Obstructive](#) [Tobacco Use Disorder](#) [Urinary Bladder Neoplasms](#) [Werner syndrome](#)