



SZABO SCANDIC

Part of Europa Biosite

Produktinformation



Forschungsprodukte & Biochemikalien



Zellkultur & Verbrauchsmaterial



Diagnostik & molekulare Diagnostik



Laborgeräte & Service

Weitere Information auf den folgenden Seiten!
See the following pages for more information!



Lieferung & Zahlungsart

siehe unsere [Liefer- und Versandbedingungen](#)

Zuschläge

- Mindermengenzuschlag
- Trockeneiszuschlag
- Gefahrgutzuschlag
- Expressversand

SZABO-SCANDIC HandelsgmbH

Quellenstraße 110, A-1100 Wien

T. +43(0)1 489 3961-0

F. +43(0)1 489 3961-7

mail@szabo-scandic.com

www.szabo-scandic.com

[linkedin.com/company/szaboscandic](https://www.linkedin.com/company/szaboscandic)

CSTF2 MaxPab mouse polyclonal antibody (B01) MaxPab®

Catalog # : H00001478-B01

規格 : [50 uL]

[List All](#)

Specification

Product Description: Mouse polyclonal antibody raised against a full-length human CSTF2 protein.

Immunogen: CSTF2 (NP_001316, 1 a.a. ~ 577 a.a) full-length human protein.

Sequence:
 MAGLTVRDPVDRSLRSVFGNIPYEATEEQLKDIFSEVGPVVSFRLVYD
 RETGKPKGYGFCEYQDQETALSAMRNLNGREFSGRALRVDNAASEKNK
 EELKSLGTGAPVIESPYGETISPEDAPESISKAVASLPPEQMFELMKQMKL
 CVQNSPQEARNMLLQNPQLAYALLQAQVVMRVDPEIALKILHRQTNIPTLI
 AGNPQPVHGAGPGSGSNVSMNQNPQAPQAQSLGGMHVNGAPPLMQ
 ASMQGGVPAPGQMPAAVTGPGPGSLAPGGGMQAQVGMFGSGPVSM
 ERGQVPMQDPRAAMQRGSLPANVPTPRGLLGDAPNDPRGGTLLSVTG
 EVEPRGYLGPPHQGPPMHVPGHESRGGPPHELGGPLPEPRPLMAEP
 RGPMLDQGRGPLDGRGGRDPRGIDARGMEARAMEARGLDARGLEARA
 MEARAMEARAMEARAMEARAMEVARGMEARGMDTRGPVPGPRGPIPSG
 MQGSPINMGAVVPQGSRQVPVMQGTGMQGASIQGGSPQGGFSPGQ
 NQVTPQDHEKAALIMQVLQLTADQIAMLPPEQRQSILILKEQIQKSTGAP

Host: Mouse

Reactivity: Human

Quality Control Testing: Antibody reactive against mammalian transfected lysate.

Storage Buffer: No additive

Storage Instruction: Store at -20°C or lower. Aliquot to avoid repeated freezing and thawing.

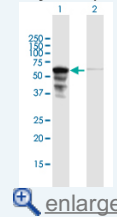
Note: For IHC and IF applications, antibody purification with Protein A will be needed prior to use.

MSDS: [Download](#)

Datasheet: [Download](#)

Application Image

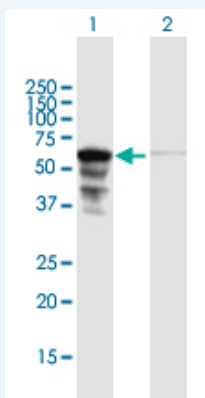
Western Blot (Transfected lysate)



[enlarge](#)

Applications

Western Blot (Transfected lysate)



Western Blot analysis of CSTF2 expression in transfected 293T cell line ([H00001478-T01](#)) by CSTF2 MaxPab polyclonal antibody.

Lane 1: CSTF2 transfected lysate(63.47 KDa).

Lane 2: Non-transfected lysate.

 [Protocol Download](#)

Gene Information

Entrez GeneID: [1478](#)

GeneBank Accession#: [NM_001325](#)

Protein Accession#: [NP_001316](#)

Gene Name: CSTF2

Gene Alias: CstF-64

Gene Description: cleavage stimulation factor, 3' pre-RNA, subunit 2, 64kDa

Omim ID: [600368](#)

Gene Ontology: [Hyperlink](#)

Gene Summary: This gene encodes a nuclear protein with an RRM (RNA recognition motif) domain. The protein is a member of the cleavage stimulation factor (CSTF) complex that is involved in the 3' end cleavage and polyadenylation of pre-mRNAs. Specifically, this protein binds GU-rich elements within the 3'-untranslated region of mRNAs. [provided by RefSeq]

Other Designations: CF-1 64 kDa subunit, OTTHUMP00000024310, betaCstF-64 variant 2, cleavage stimulation factor subunit 2, cleavage stimulation factor, 64kDa subunit

[服務條款](#) | [隱私權政策](#) | [著作及商標](#) | [網站地圖](#)

©2016 亞諾法生技股份有限公司 Abnova Corporation. 版權所有.