



SZABO SCANDIC

Part of Europa Biosite

Produktinformation



Forschungsprodukte & Biochemikalien



Zellkultur & Verbrauchsmaterial



Diagnostik & molekulare Diagnostik



Laborgeräte & Service

Weitere Information auf den folgenden Seiten!
See the following pages for more information!



Lieferung & Zahlungsart

siehe unsere [Liefer- und Versandbedingungen](#)

Zuschläge

- Mindermengenzuschlag
- Trockeneiszuschlag
- Gefahrgutzuschlag
- Expressversand

SZABO-SCANDIC HandelsgmbH

Quellenstraße 110, A-1100 Wien

T. +43(0)1 489 3961-0

F. +43(0)1 489 3961-7

mail@szabo-scandic.com

www.szabo-scandic.com

[linkedin.com/company/szaboscandic](https://www.linkedin.com/company/szaboscandic) 

CSTF2 monoclonal antibody (M02), clone 4E3-3C9

Catalog # : H00001478-M02

規格 : [100 ug]

[List All](#)

Specification

Product Description: Mouse monoclonal antibody raised against a full-length recombinant CSTF2.

Immunogen: CSTF2 (AAH17712, 1 a.a. ~ 577 a.a) full-length recombinant protein with GST tag. MW of the GST tag alone is 26 KDa.

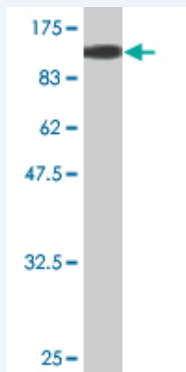
Sequence: MAGLTVRDPVAVDRSLRSVFGNIPYEATEGQLKDIFSEVGPVVSFRLVY DRETGKPKGYGFCEYQDQETALNAMRNLANGREFSGRALRVDNAASEKN KEELKSLGTGAPVIESPYGETISPEDAPESISKAVASLPPEQMFELMKQMK LCVQNSPQEARNMLLQNPQLAYALLQAQVMRIVDPEIALKILHRQTNIPT LIAGNPQPVHGAGPGSGSNVSMNQNPQAPQAQSLGGMHVNGAPPLM QASMGGVVPAPGQMPAAVTGPGPGSLAPGGGMQAQVGMPSGSPVS MERGQVPMQDPRAAMQRGSLPANVPTPRGLLGDAPNDPRGGTLLSVT GEVEPRGYLGPPHQGPPMHVPGHESRGPPELHRRGGPLPEPRPLMAE PRGPMLDQRGPPLDGRGGRDPRGIDARGMEARAMEARGLDARGLEAR AMEARAMEARAMEARAMEARAMEVRGMEARGMDTRGPVPGPRGPIPS GMQGPSINMGAVVPQGSQRQVPMQGTGMQGASIQGGSQPGGFSPG QNQVTPQDHEKAALIMQVLQLTADQIAMLPPEQRQSILILKEQIQKSTGAP

Host: Mouse

Reactivity: Human

Isotype: IgG1 Kappa

Quality Control Testing: Antibody Reactive Against Recombinant Protein.



Western Blot detection against Immunogen (89.21 KDa) .

Storage Buffer: In 1x PBS, pH 7.4

Storage Instruction: Store at -20°C or lower. Aliquot to avoid repeated freezing and thawing.

MSDS: [Download](#)

Datasheet: [Download](#)

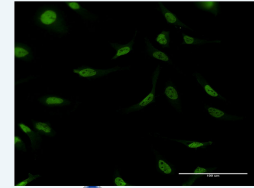
Applications

Western Blot (Recombinant protein)

Application Image

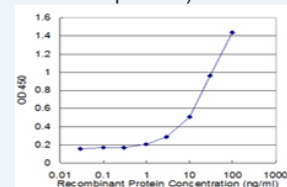
Western Blot (Recombinant protein)

Immunofluorescence



[enlarge](#)

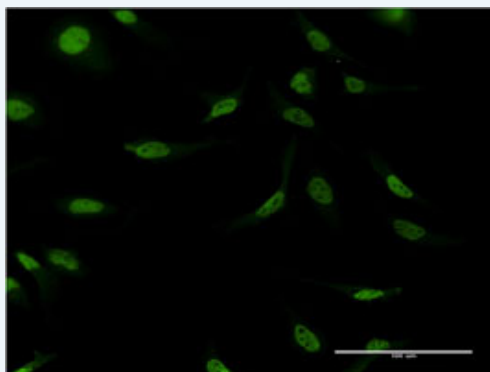
Sandwich ELISA (Recombinant protein)



[enlarge](#)


ELISA

Immunofluorescence

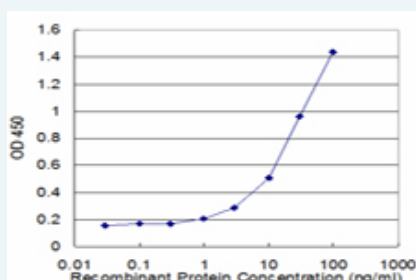


 enlarge this image


Immunofluorescence of monoclonal antibody to CSTF2 on HeLa cell . [antibody concentration 10 ug/ml]

 Protocol Download

Sandwich ELISA (Recombinant protein)



Detection limit for recombinant GST tagged CSTF2 is approximately 1ng/ml as a capture antibody.

 Protocol Download

ELISA

Gene Information

Entrez GeneID: [1478](#)

GeneBank Accession#: [BC017712](#)

Protein Accession#: [AAH17712](#)

Gene Name: CSTF2

Gene Alias: CstF-64

Gene Description: cleavage stimulation factor, 3' pre-RNA, subunit 2, 64kDa

Omim ID: [600368](#)

Gene Ontology: [Hyperlink](#)

Gene Summary: This gene encodes a nuclear protein with an RRM (RNA recognition motif) domain. The protein is a member of the cleavage stimulation factor (CSTF) complex that is involved in the 3' end cleavage and polyadenylation of pre-mRNAs. Specifically, this protein binds GU-rich elements within the 3'-untranslated region of mRNAs. [provided by RefSeq]

Other Designations: CF-1 64 kDa subunit, OTTHUMP00000024310, betaCstF-64 variant 2, cleavage stimulation factor subunit 2, cleavage stimulation factor,

[服務條款](#) | [隱私權政策](#) | [著作及商標](#) | [網站地圖](#)

©2016 亞諾法生技股份有限公司 Abnova Corporation. 版權所有.