



SZABO SCANDIC

Part of Europa Biosite

Produktinformation



Forschungsprodukte & Biochemikalien



Zellkultur & Verbrauchsmaterial



Diagnostik & molekulare Diagnostik



Laborgeräte & Service

Weitere Information auf den folgenden Seiten!
See the following pages for more information!



Lieferung & Zahlungsart

siehe unsere [Liefer- und Versandbedingungen](#)

Zuschläge

- Mindermengenzuschlag
- Trockeneiszuschlag
- Gefahrgutzuschlag
- Expressversand

SZABO-SCANDIC HandelsgmbH

Quellenstraße 110, A-1100 Wien

T. +43(0)1 489 3961-0

F. +43(0)1 489 3961-7

mail@szabo-scandic.com

www.szabo-scandic.com

[linkedin.com/company/szaboscandic](https://www.linkedin.com/company/szaboscandic) 

CSTF3 monoclonal antibody (M01), clone 1D4

Catalog # : H00001479-M01

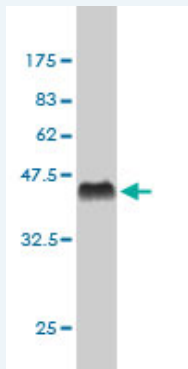
規格 : [100 ug]

[List All](#)

Specification

Product Description:	Mouse monoclonal antibody raised against a full length recombinant CSTF3.
Immunogen:	CSTF3 (AAH09792, 1 a.a. ~ 103 a.a) full-length recombinant protein with GST tag. MW of the GST tag alone is 26 KDa.
Sequence:	MSGDGATEQAAEYVPEKVKKAIEKKLEENPYDLDAWSILIREAQNPIDKARKTYERLVAQFPSSGRFWKLYIEAEVTILFYFFLYQYCSIHCSRKQVRNIAN
Host:	Mouse
Reactivity:	Human
Isotype:	IgG1 kappa

Quality Control Testing: Antibody Reactive Against Recombinant Protein.



Western Blot detection against Immunogen (37.07 KDa) .

Storage Buffer: In 1x PBS, pH 7.4

Storage Instruction: Store at -20°C or lower. Aliquot to avoid repeated freezing and thawing.

MSDS: [Download](#)

Datasheet: [Download](#)

Publication Reference

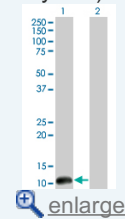
1. Polyadenylation site-specific differences in the activity of the neuronal β CstF-64 protein in PC-12 cells. Shankarling GS, Macdonald CC. Gene. 2013 Oct 25;529(2):220-7.

Applications

Western Blot (Transfected lysate)

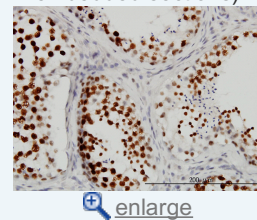
Application Image

Western Blot (Transfected lysate)

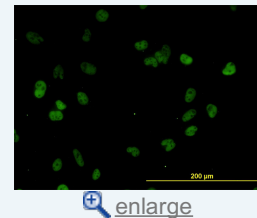


Western Blot (Recombinant protein)

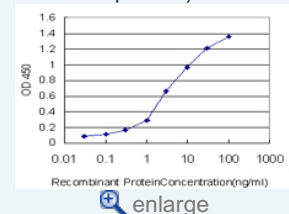
Immunohistochemistry (Formalin/PFA-fixed paraffin-embedded sections)



Immunofluorescence

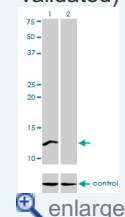


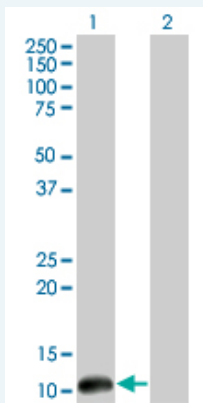
Sandwich ELISA (Recombinant protein)



ELISA


RNAi Knockdown (Antibody validated)





Western Blot analysis of CSTF3 expression in transfected 293T cell line by CSTF3 monoclonal antibody (M01), clone 1D4.

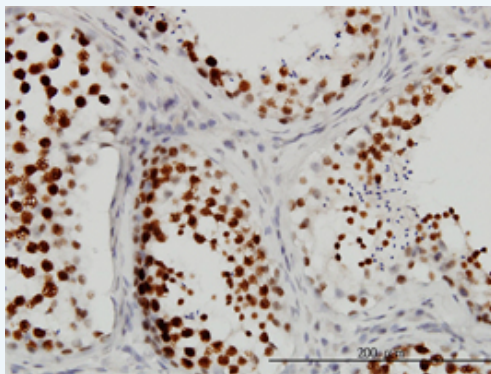
Lane 1: CSTF3 transfected lysate(11.44 KDa).
Lane 2: Non-transfected lysate.


 [Protocol Download](#)

Western Blot (Recombinant protein)

 [Protocol Download](#)

Immunohistochemistry (Formalin/PFA-fixed paraffin-embedded sections)

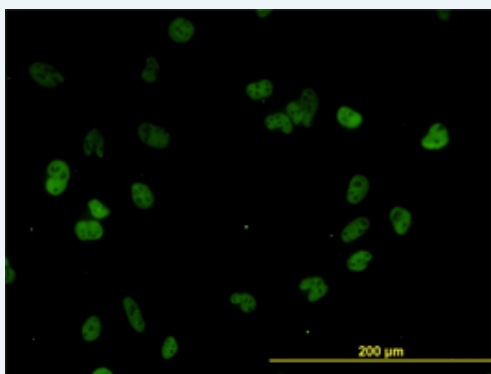



 [enlarge this image](#)

Immunoperoxidase of monoclonal antibody to CSTF3 on formalin-fixed paraffin-embedded human testis. [antibody concentration 3 ug/ml]


 [Protocol Download](#)

Immunofluorescence

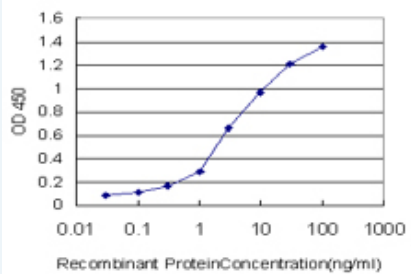


 [enlarge this image](#)

Immunofluorescence of monoclonal antibody to CSTF3 on HeLa cell. [antibody concentration 10 ug/ml]

 [Protocol Download](#)

Sandwich ELISA (Recombinant protein)

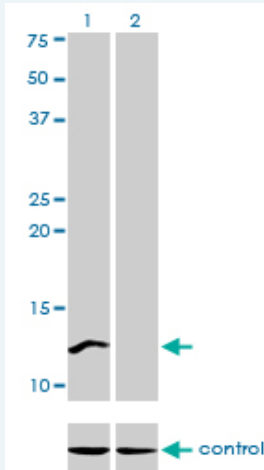


Detection limit for recombinant GST tagged CSTF3 is approximately 0.1ng/ml as a capture antibody.

[Protocol Download](#)

ELISA

RNAi Knockdown (Antibody validated)



Western blot analysis of CSTF3 over-expressed 293 cell line, cotransfected with CSTF3 Validated Chimera RNAi (Cat # H00001479-R01V) (Lane 2) or non-transfected control (Lane 1). Blot probed with CSTF3 monoclonal antibody (M01), clone 1D4 (Cat # H00001479-M01). GAPDH (36.1 kDa) used as specificity and loading control.

[Protocol Download](#)

Gene Information

Entrez GeneID: [1479](#)

GeneBank [BC009792](#)

Accession#:

Protein [AAH09792](#)

Accession#:

Gene Name: CSTF3

Gene Alias: CSTF-77,MGC117398,MGC43001,MGC75122

Gene Description: cleavage stimulation factor, 3' pre-RNA, subunit 3, 77kDa

Omim ID: [600367](#)

Gene Ontology: [Hyperlink](#)

Gene Summary: The protein encoded by this gene is one of three (including CSTF1 and CSTF2) cleavage stimulation factors that combine to form the cleavage stimulation factor complex (CSTF). This complex is involved in the polyadenylation and 3' end cleavage of pre-mRNAs. The encoded protein functions as a homodimer and interacts directly with both CSTF1 and CSTF2 in the CSTF complex. Alternative splicing results in multiple transcript variants encoding different isoforms. [provided by RefSeq

Other CSTF 77 kDa subunit,cleavage stimulation factor subunit 3,cleavage
Designations: stimulation factor subunit 3, isoform 1

[服務條款](#) | [隱私權政策](#) | [著作及商標](#) | [網站地圖](#)

©2016 亞諾法生技股份有限公司 Abnova Corporation. 版權所有.