



SZABO SCANDIC

Part of Europa Biosite

Produktinformation



Forschungsprodukte & Biochemikalien



Zellkultur & Verbrauchsmaterial



Diagnostik & molekulare Diagnostik



Laborgeräte & Service

Weitere Information auf den folgenden Seiten!
See the following pages for more information!



Lieferung & Zahlungsart

siehe unsere [Liefer- und Versandbedingungen](#)

Zuschläge

- Mindermengenzuschlag
- Trockeneiszuschlag
- Gefahrgutzuschlag
- Expressversand

SZABO-SCANDIC HandelsgmbH

Quellenstraße 110, A-1100 Wien

T. +43(0)1 489 3961-0

F. +43(0)1 489 3961-7

mail@szabo-scandic.com

www.szabo-scandic.com

[linkedin.com/company/szaboscandic](https://www.linkedin.com/company/szaboscandic) 

NKX2-5 purified MaxPab rabbit polyclonal antibody (D01P) MaxPab®

Catalog # : H00001482-D01P

規格 : [100 ug]

[List All](#)

Specification

Product Description: Rabbit polyclonal antibody raised against a full-length human NKX2-5 protein.

Immunogen: NKX2-5 (NP_004378.1, 1 a.a. ~ 324 a.a) full-length human protein.

Sequence:
 MFPSPALTPTPFVSKDILNLEQQQRSLAAAGEL SARLEATLAPSSCMLAA
 FKPEAYAGPEAAAPGLPELRAELGRAPSPAKCASAFPAAPAFYPRAYSD
 PDKAKDPRAEKKELCALQKAVELEKTEADNAERPRARRRRKPRVLF SQA
 QVYELERRFKQQRYSAPERDQLASVLKLTSTQVKIWFQNRRYKCKRQ
 RQDQTLELVGLPPPPPPARRIAVPVLVRDGGKPCLGDSAPYAPAYGVGL
 NPYGYNAYPAYPGYGAACSPGYSCTAAYPAGPSPAQPATAAANNFV
 NFGVGD LNAVQSPGIPQSN SGVSTLHGIRAW

Host: Rabbit

Reactivity: Human

Quality Control Testing: Antibody reactive against mammalian transfected lysate.

Storage Buffer: In 1x PBS, pH 7.4

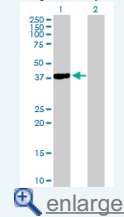
Storage Instruction: Store at -20°C or lower. Aliquot to avoid repeated freezing and thawing.

MSDS: [Download](#)

Datasheet: [Download](#)

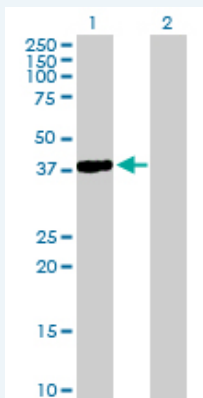
Application Image

Western Blot (Transfected lysate)



Applications

Western Blot (Transfected lysate)



Western Blot analysis of NKX2-5 expression in transfected 293T cell line (H00001482-T01) by NKX2-5 MaxPab polyclonal antibody.

Lane 1: NKX2-5 transfected lysate(34.90 KDa).

Lane 2: Non-transfected lysate.

[Protocol Download](#)

Gene Information

Entrez GeneID: [1482](#)

GeneBank
Accession#: [NM_004387.2](#)

Protein
Accession#: [NP_004378.1](#)

Gene Name: [NKX2-5](#)

Gene Alias: [CHNG5,CSX,CSX1,NKX2.5,NKX2E,NKX4-1](#)

Gene
Description: [NK2 transcription factor related, locus 5 \(Drosophila\)](#)

Omim ID: [108900](#), [187500](#), [600584](#)

Gene Ontology: [Hyperlink](#)

Gene Summary: Homeobox-containing genes play critical roles in regulating tissue-specific gene expression essential for tissue differentiation, as well as determining the temporal and spatial patterns of development (Shiojima et al., 1995 [PubMed 7665173]). It has been demonstrated that a Drosophila homeobox-containing gene called 'tinman' is expressed in the developing dorsal vessel and in the equivalent of the vertebrate heart. Mutations in tinman result in loss of heart formation in the embryo, suggesting that tinman is essential for Drosophila heart formation. Furthermore, abundant expression of Csx, the presumptive mouse homolog of tinman, is observed only in the heart from the time of cardiac differentiation. CSX, the human homolog of murine Csx, has a homeodomain sequence identical to that of Csx and is expressed only in the heart, again suggesting that CSX plays an important role in human heart formation.[supplied by OMIM]

Other
Designations: [NK2 transcription factor homolog E,NK2 transcription factor related, locus 5,cardiac-specific homeo box,tinman paralog](#)

Related Disease

[Alagille Syndrome](#) [Arthritis, Rheumatoid](#) [Atrial Fibrillation](#) [Cardiovascular Diseases](#)
[Chromosome Deletion](#) [Congenital Hypothyroidism](#) [Diabetes Mellitus, Type 2](#)
[Down Syndrome](#) [Ductus Arteriosus, Patent](#) [Ebstein Anomaly](#) [Edema](#)
[Genetic Predisposition to Disease](#) [Graves Disease](#) [Hand Deformities, Congenital](#)
[Heart Block](#) [Heart Defects, Congenital](#) [Heart Septal Defects](#) [Heart Septal Defects, Atrial](#)
[Heart Septal Defects, Ventricular](#)

... see more