



SZABO SCANDIC

Part of Europa Biosite

Produktinformation



Forschungsprodukte & Biochemikalien



Zellkultur & Verbrauchsmaterial



Diagnostik & molekulare Diagnostik



Laborgeräte & Service

Weitere Information auf den folgenden Seiten!
See the following pages for more information!



Lieferung & Zahlungsart

siehe unsere [Liefer- und Versandbedingungen](#)

Zuschläge

- Mindermengenzuschlag
- Trockeneiszuschlag
- Gefahrgutzuschlag
- Expressversand

SZABO-SCANDIC HandelsgmbH

Quellenstraße 110, A-1100 Wien

T. +43(0)1 489 3961-0

F. +43(0)1 489 3961-7

mail@szabo-scandic.com

www.szabo-scandic.com

[linkedin.com/company/szaboscandic](https://www.linkedin.com/company/szaboscandic) 

NKX2-5 monoclonal antibody (M01), clone 1E4-G5

Catalog # : H00001482-M01

規格 : [100 ug]

[List All](#)

Specification

Product Description: Mouse monoclonal antibody raised against a full length recombinant NKX2-5.

Immunogen: NKX2-5 (AAH25711, 1 a.a. ~ 324 a.a) full-length recombinant protein with GST tag. MW of the GST tag alone is 26 KDa.

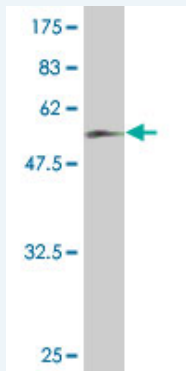
Sequence: MFPSPALTPFPFSVKDILNLEQQQRSLAAAGEL SARLEATLAPSSCMLAA FKPEAYAGPEAAAPGLPELRAELGRAPSPAKCASAFPAPAFYPRAYS DPDAKDPRAEKKELCALQKAVELEKTEADNAERPRARRRRKPRVLF SQA QVYELERRFKQQRYSAPERDQLASVLKLTSTQVKIWFQNRRYKCKRQ RQDQTLLELVGLPPPPPPARRIAPVLRDVGKPCLGDSAPYAPAYGVGL NPYGYNAYPAYPGYGAACSPGY SCTAAYPAGPSPAQPATAAANNFV NFGVGD LNAVQSPGIPQSNSGVSTLHGIRAW

Host: Mouse

Reactivity: Human

Isotype: IgG1 Kappa

Quality Control Testing: Antibody Reactive Against Recombinant Protein.



Western Blot detection against Immunogen (61.38 KDa) .

Storage Buffer: In 1x PBS, pH 7.4

Storage Instruction: Store at -20°C or lower. Aliquot to avoid repeated freezing and thawing.

MSDS: [Download](#)

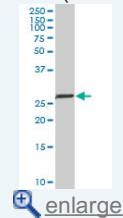
Datasheet: [Download](#)

Publication Reference

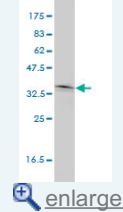
- [Complex SUMO-1 Regulation of Cardiac Transcription Factor Nkx2-5.](#)
Costa MW, Lee S, Furtado MB, Xin L, Sparrow DB, Martinez CG, Dunwoodie SL, Kurtenbach E, Mohun T, Rosenthal N, Harvey RP. PLoS One. 2011;6(9):e24812. Epub 2011 Sep 12.
- [RNA toxicity in myotonic muscular dystrophy induces NKX2-5 expression.](#)
Yadava RS, Frenzel-McCardell CD, Yu Q, Srinivasan V, Tucker AL, Puymirat J,

Application Image

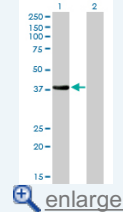
Western Blot (Tissue lysate)



Western Blot (Cell lysate)

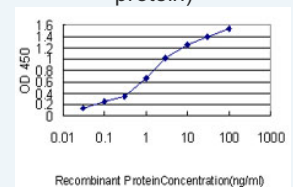


Western Blot (Transfected lysate)



Western Blot (Recombinant protein)

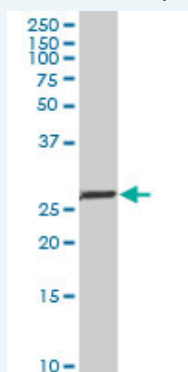
Sandwich ELISA (Recombinant protein)



ELISA

Applications

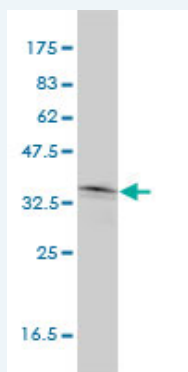
Western Blot (Tissue lysate)



NKX2-5 monoclonal antibody (M01), clone 1E4-G5. Western Blot analysis of NKX2-5 expression in human thyroid (diffuse hyperplasia).

 [Protocol Download](#)

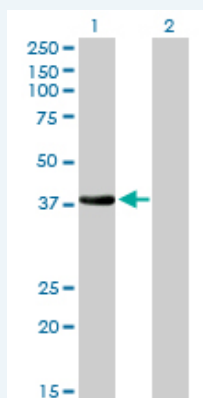
Western Blot (Cell lysate)



NKX2-5 monoclonal antibody (M01), clone 1E4-G5. Western Blot analysis of NKX2-5 expression in HeLa (Cat # L013V1).

 [Protocol Download](#)


Western Blot (Transfected lysate)



Western Blot analysis of NKX2-5 expression in transfected 293T cell line by NKX2-5 monoclonal antibody (M01), clone 1E4-G5.

Lane 1: NKX2-5 transfected lysate (34.9 kDa).

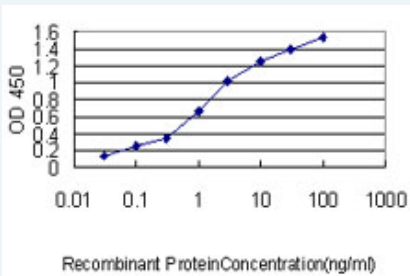
Lane 2: Non-transfected lysate.

 [Protocol Download](#)


Western Blot (Recombinant protein)

 [Protocol Download](#)

Sandwich ELISA (Recombinant protein)



Detection limit for recombinant GST tagged NKX2-5 is approximately 0.03ng/ml as a capture antibody.

 [Protocol Download](#)

ELISA

Gene Information

Entrez GeneID: [1482](#)

GeneBank [BC025711](#)

Accession#:

Protein [AAH25711](#)

Accession#:

Gene Name: NKX2-5

Gene Alias: CHNG5, CSX, CSX1, NKX2.5, NKX2E, NKX4-1

Gene Description: NK2 transcription factor related, locus 5 (Drosophila)

Omim ID: [108900](#), [187500](#), [600584](#)

Gene Ontology: [Hyperlink](#)

Gene Summary: Homeobox-containing genes play critical roles in regulating tissue-specific gene expression essential for tissue differentiation, as well as determining the temporal and spatial patterns of development (Shiojima et al., 1995 [PubMed 7665173]). It has been demonstrated that a Drosophila homeobox-containing gene called 'tinman' is expressed in the developing dorsal vessel and in the equivalent of the vertebrate heart. Mutations in tinman result in loss of heart formation in the embryo, suggesting that tinman is essential for Drosophila heart formation. Furthermore, abundant expression of Csx, the presumptive mouse homolog of tinman, is observed only in the heart from the time of cardiac differentiation. CSX, the human homolog of murine Csx, has a homeodomain sequence identical to that of Csx and is expressed only in the heart, again suggesting that CSX plays an important role in human heart formation.[supplied by OMIM]

Other Designations: NK2 transcription factor homolog E, NK2 transcription factor related, locus 5, cardiac-specific homeo box, tinman paralog

Related Disease

[Alagille Syndrome](#) [Arthritis, Rheumatoid](#) [Atrial Fibrillation](#) [Cardiovascular Diseases](#) [Chromosome Deletion](#) [Congenital Hypothyroidism](#) [Diabetes Mellitus, Type 2](#) [Down Syndrome](#) [Ductus Arteriosus, Patent](#) [Ebstein Anomaly](#) [Edema](#) [Genetic Predisposition to Disease](#) [Graves Disease](#) [Hand Deformities, Congenital](#) [Heart Block](#) [Heart Defects, Congenital](#) [Heart Septal Defects](#) [Heart Septal Defects, Atrial](#) [Heart Septal Defects, Ventricular](#)

... see more

