



# SZABO SCANDIC

Part of Europa Biosite

## Produktinformation



Forschungsprodukte & Biochemikalien



Zellkultur & Verbrauchsmaterial



Diagnostik & molekulare Diagnostik



Laborgeräte & Service

Weitere Information auf den folgenden Seiten!  
See the following pages for more information!



### Lieferung & Zahlungsart

siehe unsere [Liefer- und Versandbedingungen](#)

### Zuschläge

- Mindermengenzuschlag
- Trockeneiszuschlag
- Gefahrgutzuschlag
- Expressversand

### SZABO-SCANDIC HandelsgmbH

Quellenstraße 110, A-1100 Wien

T. +43(0)1 489 3961-0

F. +43(0)1 489 3961-7

[mail@szabo-scandic.com](mailto:mail@szabo-scandic.com)

[www.szabo-scandic.com](http://www.szabo-scandic.com)

[linkedin.com/company/szaboscandic](https://www.linkedin.com/company/szaboscandic) 

## NKX2-5 monoclonal antibody (M02), clone S1

Catalog # : H00001482-M02

規格 : [ 100 ug ]

[List All](#)

### Specification

**Product Description:** Mouse monoclonal antibody raised against a full length recombinant NKX2-5.

**Immunogen:** NKX2-5 (AAH25711, 1 a.a. ~ 324 a.a) full-length recombinant protein with GST tag. MW of the GST tag alone is 26 KDa.

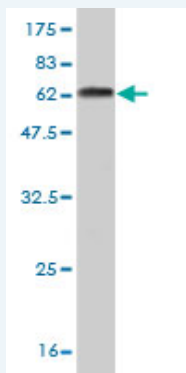
**Sequence:** MFPSPALTPFPFSVKDILNLEQQQRSLAAAGEL SARLEATLAPSSCMLAA  
FKPEAYAGPEAAAPGLPELRAELGRAPSPAKCASAFPAPAFYPRAYS  
D PDKAKDPRAEKELCALQKAVELEKTEADNAERPRARRRRKPRVLF  
SQA QVYELERRFKQQRYSAPERDQLASVLKLTSTQVKIWFQNR  
RYKCKRQ RQDQTLLELVGLPPPPPPARRIAPVLRD  
GKPCLGDSAPYAPAYGVGL NPYGYNAYPAYPGY  
GGAACSPGYSCTAAYPAGPSAPATAAANNFV  
NFGVGD LNAVQSPGIPQSNSGVSTLHGIRAW

**Host:** Mouse

**Reactivity:** Human

**Isotype:** IgG1 Kappa

**Quality Control Testing:** Antibody Reactive Against Recombinant Protein.



Western Blot detection against Immunogen (61.38 KDa) .

**Storage Buffer:** In 1x PBS, pH 7.4

**Storage Instruction:** Store at -20°C or lower. Aliquot to avoid repeated freezing and thawing.

**MSDS:** [Download](#)

**Datasheet:** [Download](#)

### Applications

**Western Blot (Recombinant protein)**

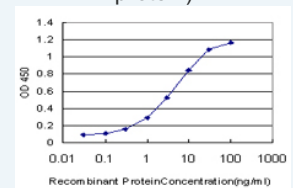
[Protocol Download](#)

**Sandwich ELISA (Recombinant protein)**

### Application Image

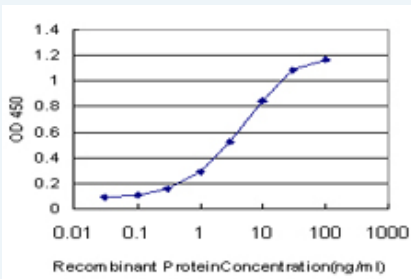
Western Blot (Recombinant protein)

Sandwich ELISA (Recombinant protein)



[enlarge](#)

ELISA



Detection limit for recombinant GST tagged NKX2-5 is approximately 0.1ng/ml as a capture antibody.

 [Protocol Download](#)

## ELISA

### Gene Information

**Entrez GeneID:** [1482](#)

**GeneBank** [BC025711](#)

**Accession#:**

**Protein** [AAH25711](#)

**Accession#:**

**Gene Name:** NKX2-5

**Gene Alias:** CHNG5,CSX,CSX1,NKX2.5,NKX2E,NKX4-1

**Gene** NK2 transcription factor related, locus 5 (Drosophila)

**Description:**

**Omim ID:** [108900](#), [187500](#), [600584](#)

**Gene Ontology:** [Hyperlink](#)

**Gene Summary:** Homeobox-containing genes play critical roles in regulating tissue-specific gene expression essential for tissue differentiation, as well as determining the temporal and spatial patterns of development (Shiojima et al., 1995 [PubMed 7665173]). It has been demonstrated that a Drosophila homeobox-containing gene called 'tinman' is expressed in the developing dorsal vessel and in the equivalent of the vertebrate heart. Mutations in tinman result in loss of heart formation in the embryo, suggesting that tinman is essential for Drosophila heart formation. Furthermore, abundant expression of Csx, the presumptive mouse homolog of tinman, is observed only in the heart from the time of cardiac differentiation. CSX, the human homolog of murine Csx, has a homeodomain sequence identical to that of Csx and is expressed only in the heart, again suggesting that CSX plays an important role in human heart formation.[supplied by OMIM]

**Other** NK2 transcription factor homolog E,NK2 transcription factor related,

**Designations:** locus 5,cardiac-specific homeo box,tinman paralog

### Related Disease

[Alagille Syndrome](#) [Arthritis, Rheumatoid](#) [Atrial Fibrillation](#) [Cardiovascular Diseases](#) [Chromosome Deletion](#) [Congenital Hypothyroidism](#) [Diabetes Mellitus, Type 2](#) [Down Syndrome](#) [Ductus Arteriosus, Patent](#) [Ebstein Anomaly](#) [Edema](#) [Genetic Predisposition to Disease](#) [Graves Disease](#) [Hand Deformities, Congenital](#) [Heart Block](#) [Heart Defects, Congenital](#) [Heart Septal Defects](#) [Heart Septal Defects, Atrial](#) [Heart Septal Defects, Ventricular](#)

... see more

