



SZABO SCANDIC

Part of Europa Biosite

Produktinformation



Forschungsprodukte & Biochemikalien



Zellkultur & Verbrauchsmaterial



Diagnostik & molekulare Diagnostik



Laborgeräte & Service

Weitere Information auf den folgenden Seiten!
See the following pages for more information!



Lieferung & Zahlungsart

siehe unsere [Liefer- und Versandbedingungen](#)

Zuschläge

- Mindermengenzuschlag
- Trockeneiszuschlag
- Gefahrgutzuschlag
- Expressversand

SZABO-SCANDIC HandelsgmbH

Quellenstraße 110, A-1100 Wien

T. +43(0)1 489 3961-0

F. +43(0)1 489 3961-7

mail@szabo-scandic.com

www.szabo-scandic.com

[linkedin.com/company/szaboscandic](https://www.linkedin.com/company/szaboscandic) 

NKX2-5 293T Cell Transient Overexpression Lysate(Denatured)

Catalog # : H00001482-T01

規格 : [100 uL]

[List All](#)

Specification

Transfected Cell Line: 293T

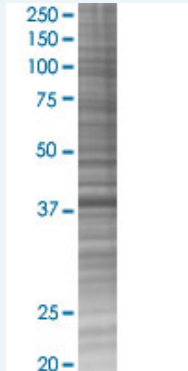
Plasmid: pCMV-NKX2-5 full-length

Host: Human

Theoretical MW (kDa): 34.9

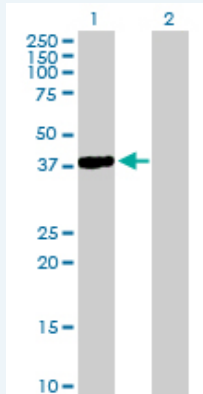
Quality Control Testing: Transient overexpression cell lysate was tested with Anti-NKX2-5 antibody ([H00001482-D01P](#)) by Western Blots.

SDS-PAGE Gel



NKX2-5 transfected lysate.

Western Blot



Lane 1: NKX2-5 transfected lysate (35.75 KDa)

Lane 2: Non-transfected lysate.

Storage Buffer: 1X Sample Buffer (50 mM Tris-HCl, 2% SDS, 10% glycerol, 300 mM 2-mercaptoethanol, 0.01% Bromophenol blue)

Storage Instruction: Store at -80°C. Aliquot to avoid repeated freezing and thawing.

MSDS:  [Download](#)

Applications

Western Blot

Gene Information

Entrez GeneID: [1482](#)

GeneBank [NM_004387.2](#)
Accession#:

Protein [NP_004378.1](#)
Accession#:

Gene Name: NKX2-5

Gene Alias: CHNG5,CSX,CSX1,NKX2.5,NKX2E,NKX4-1

Gene Description: NK2 transcription factor related, locus 5 (Drosophila)

Omim ID: [108900](#), [187500](#), [600584](#)

Gene Ontology: [Hyperlink](#)

Gene Summary: Homeobox-containing genes play critical roles in regulating tissue-specific gene expression essential for tissue differentiation, as well as determining the temporal and spatial patterns of development (Shiojima et al., 1995 [PubMed 7665173]). It has been demonstrated that a Drosophila homeobox-containing gene called 'tinman' is expressed in the developing dorsal vessel and in the equivalent of the vertebrate heart. Mutations in tinman result in loss of heart formation in the embryo, suggesting that tinman is essential for Drosophila heart formation. Furthermore, abundant expression of Csx, the presumptive mouse homolog of tinman, is observed only in the heart from the time of cardiac differentiation. CSX, the human homolog of murine Csx, has a homeodomain sequence identical to that of Csx and is expressed only in the heart, again suggesting that CSX plays an important role in human heart formation.[supplied by OMIM]

Other Designations: NK2 transcription factor homolog E,NK2 transcription factor related, locus 5,cardiac-specific homeo box,tinman paralog

Related Disease

[Alagille Syndrome](#) [Arthritis, Rheumatoid](#) [Atrial Fibrillation](#) [Cardiovascular Diseases](#) [Chromosome Deletion](#) [Congenital Hypothyroidism](#) [Diabetes Mellitus, Type 2](#) [Down Syndrome](#) [Ductus Arteriosus, Patent](#) [Ebstein Anomaly](#) [Edema](#) [Genetic Predisposition to Disease](#) [Graves Disease](#) [Hand Deformities, Congenital](#) [Heart Block](#) [Heart Defects, Congenital](#) [Heart Septal Defects](#) [Heart Septal Defects, Atrial](#) [Heart Septal Defects, Ventricular](#)

... see more