



# SZABO SCANDIC

Part of Europa Biosite

## Produktinformation



Forschungsprodukte & Biochemikalien



Zellkultur & Verbrauchsmaterial



Diagnostik & molekulare Diagnostik



Laborgeräte & Service

Weitere Information auf den folgenden Seiten!  
See the following pages for more information!



### Lieferung & Zahlungsart

siehe unsere [Liefer- und Versandbedingungen](#)

### Zuschläge

- Mindermengenzuschlag
- Trockeneiszuschlag
- Gefahrgutzuschlag
- Expressversand

### SZABO-SCANDIC HandelsgmbH

Quellenstraße 110, A-1100 Wien

T. +43(0)1 489 3961-0

F. +43(0)1 489 3961-7

[mail@szabo-scandic.com](mailto:mail@szabo-scandic.com)

[www.szabo-scandic.com](http://www.szabo-scandic.com)

[linkedin.com/company/szaboscandic](https://www.linkedin.com/company/szaboscandic) 

## CTBP1 polyclonal antibody (A01)

Catalog # : H00001487-A01

規格 : [ 50 uL ]

List All

### Specification

**Product Description:** Mouse polyclonal antibody raised against a full-length recombinant CTBP1.

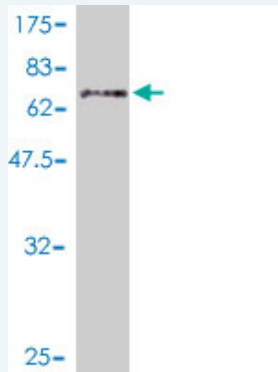
**Immunogen:** CTBP1 (AAH53320, 1 a.a. ~ 429 a.a) full-length recombinant protein with GST tag.

**Sequence:** MSGVRPPIMNGPLHPRPLVALLDGRDCTVEMPILKDVATVAFCDQSTQ  
EIHEKVLNEAVGALMYHTITLTREDLEKFKALRIIVRIGSGFDNIDIKSAGDL  
GIAVCN/PAASVEETADSTLCHILNLYRRATWLHQALREGTRVQSVEQIR  
EVASGAARIRGETLGIIGLGRVGGQAVALLRAKAFGNVLFYDPYLSDGVER  
ALGLQRVSTLQDLLFHSDCVTLHCGLNEHNHHLINDFTVKQMRQGAFLV  
NTARGGLVDEKALAQALKEGRIRGAALDVHESEPFSSQGPLKDAPNLIC  
TPHAAWYSEQASIEMREEAAREIRRAITGRIPDSLKNCVNDHDLTAATHW  
ASMDPAVVHPELNGAAYRYPPGVVGVAPTGIPAAVEGIVPSAMSLSHGLP  
PVAHPPHAPSPGQTVKPEADRDHASDQL

**Host:** Mouse

**Reactivity:** Human

**Quality Control Testing:** Antibody Reactive Against Recombinant Protein.



Western Blot detection against Immunogen (73.3 KDa) .

**Storage Buffer:** 50 % glycerol

**Storage Instruction:** Store at -20°C or lower. Aliquot to avoid repeated freezing and thawing.

**MSDS:**  [Download](#)

**Datasheet:**  [Download](#)

### Applications

**Western Blot (Recombinant protein)**

 [Protocol Download](#)

**ELISA**

## Gene Information

---

**Entrez GeneID:** [1487](#)

---

**GeneBank  
Accession#:** [BC053320](#)

---

**Protein  
Accession#:** [AAH53320](#)

---

**Gene Name:** CTBP1

---

**Gene Alias:** BARS,MGC104684

---

**Gene  
Description:** C-terminal binding protein 1

---

**Omim ID:** [602618](#)

---

**Gene Ontology:** [Hyperlink](#)

---

**Gene Summary:** This gene encodes a protein that binds to the C-terminus of adenovirus E1A proteins. This phosphoprotein is a transcriptional repressor and may play a role during cellular proliferation. This protein and the product of a second closely related gene, CTBP2, can dimerize. Both proteins can also interact with a polycomb group protein complex which participates in regulation of gene expression during development. Alternative splicing of transcripts from this gene results in multiple transcript variants. [provided by RefSeq]

---

**Other  
Designations:** brefeldin A-ribosylated substrate

---

## Gene Pathway

---

[Chronic myeloid leukemia](#) [Notch signaling pathway](#) [Pathways in cancer](#)  
[Wnt signaling pathway](#)

## Related Disease

---

[Cerebral Hemorrhage](#) [Genetic Predisposition to Disease](#) [Hypertension](#)  
[Intracranial Hemorrhages](#) [Stroke](#) [Subarachnoid Hemorrhage](#)