



# SZABO SCANDIC

Part of Europa Biosite

## Produktinformation



Forschungsprodukte & Biochemikalien



Zellkultur & Verbrauchsmaterial



Diagnostik & molekulare Diagnostik



Laborgeräte & Service

Weitere Information auf den folgenden Seiten!  
See the following pages for more information!



### Lieferung & Zahlungsart

siehe unsere [Liefer- und Versandbedingungen](#)

### Zuschläge

- Mindermengenzuschlag
- Trockeneiszuschlag
- Gefahrgutzuschlag
- Expressversand

### SZABO-SCANDIC HandelsgmbH

Quellenstraße 110, A-1100 Wien

T. +43(0)1 489 3961-0

F. +43(0)1 489 3961-7

[mail@szabo-scandic.com](mailto:mail@szabo-scandic.com)

[www.szabo-scandic.com](http://www.szabo-scandic.com)

[linkedin.com/company/szaboscandic](https://www.linkedin.com/company/szaboscandic) 

## CTBP1 purified MaxPab rabbit polyclonal antibody (D01P) MaxPab®

Catalog # : H00001487-D01P

規格 : [ 100 ug ]

[List All](#)

### Specification

**Product Description:** Rabbit polyclonal antibody raised against a full-length human CTBP1 protein.

**Immunogen:** CTBP1 (NP\_001012632.1, 1 a.a. ~ 429 a.a) full-length human protein.

**Sequence:**  
 MSGVRPPIMNGPLHPRPLVALLDGRDCTVEMPILKDVATVAFCDQAQSTQ  
 EIHEKVLNEAVGALMYHTITLTREDLEKFKALRIIVRIGSGFDNIDIKSAGDL  
 GIAVCNVPAASVEETADSTLCHILNLYRRATWLHQALREGTRVQSVEQIR  
 EVASGAARIRGETLGIIGLGRVGGQAVALRAKAFGFNLFYDPYLSDGVER  
 ALGLQRVSTLQDLLFHSDCVTLHCGLNEHNHHLINDFTVKQMRQGAFLV  
 NTARGGLVDEKALAQALKEGRIRGAALDVHESEPFSSQGPLKDAPNLIC  
 TPHAAWYSEQASIEMREEAAREIRRAITGRIPDSLKNCVNDHDLTAATHW  
 ASMDPAVVHPELNGAAYRYPPGVVGVAPTGIPAAVEGIVPSAMSLSHGLP  
 PVAHPPHAPSPGQTVKPEADRDHASDQL

**Host:** Rabbit

**Reactivity:** Human

**Quality Control Testing:** Antibody reactive against mammalian transfected lysate.

**Storage Buffer:** In 1x PBS, pH 7.4

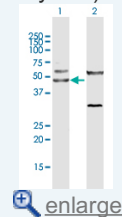
**Storage Instruction:** Store at -20°C or lower. Aliquot to avoid repeated freezing and thawing.

**MSDS:** [Download](#)

**Datasheet:** [Download](#)

### Application Image

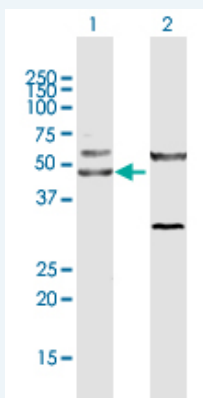
Western Blot (Transfected lysate)



[enlarge](#)

### Applications

Western Blot (Transfected lysate)



Western Blot analysis of CTBP1 expression in transfected 293T cell line (H00001487-T01) by CTBP1 MaxPab polyclonal antibody.

Lane 1: CTBP1 transfected lysate(46.40 KDa).

Lane 2: Non-transfected lysate.

## Gene Information

---

**Entrez GeneID:** [1487](#)

**GeneBank Accession#:** [NM\\_001012614](#)

**Protein Accession#:** [NP\\_001012632.1](#)

**Gene Name:** CTBP1

**Gene Alias:** BARS,MGC104684

**Gene Description:** C-terminal binding protein 1

**Omim ID:** [602618](#)

**Gene Ontology:** [Hyperlink](#)

**Gene Summary:** This gene encodes a protein that binds to the C-terminus of adenovirus E1A proteins. This phosphoprotein is a transcriptional repressor and may play a role during cellular proliferation. This protein and the product of a second closely related gene, CTBP2, can dimerize. Both proteins can also interact with a polycomb group protein complex which participates in regulation of gene expression during development. Alternative splicing of transcripts from this gene results in multiple transcript variants. [provided by RefSeq]

**Other Designations:** brefeldin A-ribosylated substrate

## Gene Pathway

---

[Chronic myeloid leukemia](#) [Notch signaling pathway](#) [Pathways in cancer](#)  
[Wnt signaling pathway](#)

## Related Disease

---

[Cerebral Hemorrhage](#) [Genetic Predisposition to Disease](#) [Hypertension](#)  
[Intracranial Hemorrhages](#) [Stroke](#) [Subarachnoid Hemorrhage](#)