



SZABO SCANDIC

Part of Europa Biosite

Produktinformation



Forschungsprodukte & Biochemikalien



Zellkultur & Verbrauchsmaterial



Diagnostik & molekulare Diagnostik



Laborgeräte & Service

Weitere Information auf den folgenden Seiten!
See the following pages for more information!



Lieferung & Zahlungsart

siehe unsere [Liefer- und Versandbedingungen](#)

Zuschläge

- Mindermengenzuschlag
- Trockeneiszuschlag
- Gefahrgutzuschlag
- Expressversand

SZABO-SCANDIC HandelsgmbH

Quellenstraße 110, A-1100 Wien

T. +43(0)1 489 3961-0

F. +43(0)1 489 3961-7

mail@szabo-scandic.com

www.szabo-scandic.com

[linkedin.com/company/szaboscandic](https://www.linkedin.com/company/szaboscandic) 

CTBP1 monoclonal antibody (M01), clone 2G7

Catalog # : H00001487-M01

規格 : [100 ug]

[List All](#)

Specification

Product Description: Mouse monoclonal antibody raised against a full length recombinant CTBP1.

Immunogen: CTBP1 (AAH53320, 1 a.a. ~ 429 a.a) full-length recombinant protein with GST tag. MW of the GST tag alone is 26 KDa.

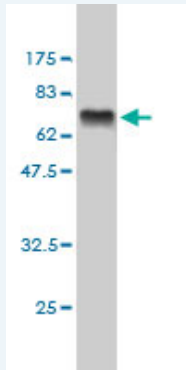
Sequence: MSGVRPPIMNGPLHPRPLVALLDGRDCTVEMPILKDVATVAFCDQSTQ
 EIHEKVLNEAVGALMYHTITLTREDLEKFKALRIIVRIGSGFDNIDIKSAGDL
 GIAVCN/PAASVEETADSTLCHILNLYRRATWLHQALREGTRVQSVEQIR
 EVASGAARIRGETLGIIGLGRVGQAVALLRAKAFGNVLFYDPYLSDGVER
 ALGLQRVSTLQDLLFHSDCVTLHCGLNEHNHHLINDFTVKQMRQGAFLV
 NTARGGLVDEKALAQALKEGRIRGAALDVHESEPFSSQGPLKDAPNLIC
 TPHAAWYSEQASIEMREEAAREIRRAITGRIPDSLKNCVKNKDHLEAATHW
 ASMDPAVVHPELNGAAYRYPPGVVGVAPTGIPAAVEGIVPSAMSLSHGLP
 PVAHPPHAPSPGQTVKPEADRDHASDQL

Host: Mouse

Reactivity: Human

Isotype: IgG2b kappa

Quality Control Testing: Antibody Reactive Against Recombinant Protein.



Western Blot detection against Immunogen (72.93 KDa) .

Storage Buffer: In 1x PBS, pH 7.4

Storage Instruction: Store at -20°C or lower. Aliquot to avoid repeated freezing and thawing.

MSDS: [Download](#)

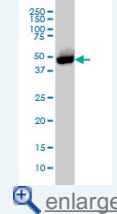
Datasheet: [Download](#)

Applications

Western Blot (Cell lysate)

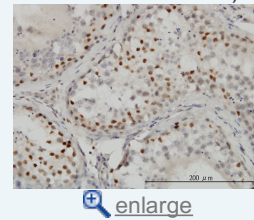
Application Image

Western Blot (Cell lysate)

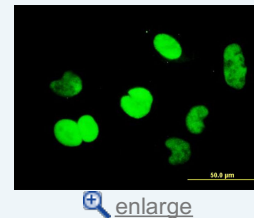


Western Blot (Recombinant protein)

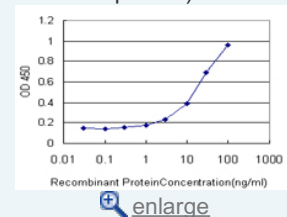
Immunohistochemistry (Formalin/PFA-fixed paraffin-embedded sections)



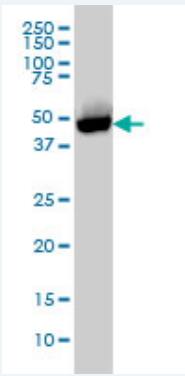
Immunofluorescence



Sandwich ELISA (Recombinant protein)



ELISA



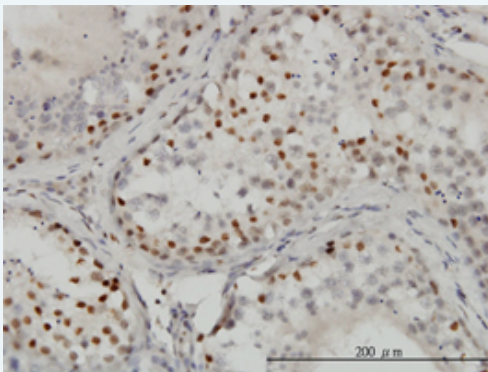
CTBP1 monoclonal antibody (M01), clone 2G7 Western Blot analysis of CTBP1 expression in HL-60 (Cat # L014V1).

[Protocol Download](#)

Western Blot (Recombinant protein)

[Protocol Download](#)

Immunohistochemistry (Formalin/PFA-fixed paraffin-embedded sections)

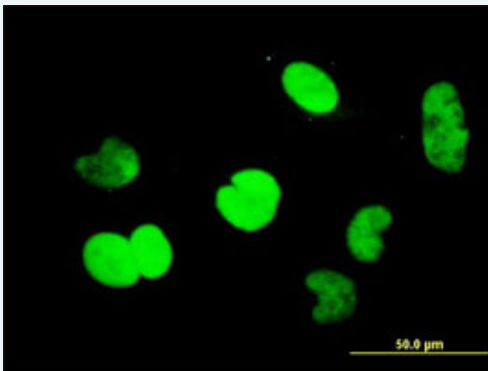


[enlarge this image](#)

Immunoperoxidase of monoclonal antibody to CTBP1 on formalin-fixed paraffin-embedded human testis. [antibody concentration 3 ug/ml]

[Protocol Download](#)

Immunofluorescence

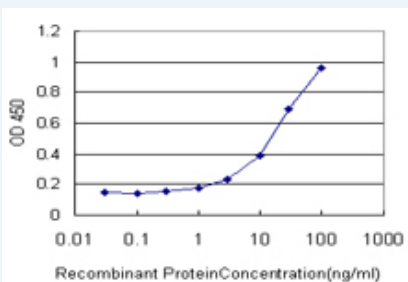


[enlarge this image](#)

Immunofluorescence of monoclonal antibody to CTBP1 on HeLa cell. [antibody concentration 10 ug/ml]

[Protocol Download](#)

Sandwich ELISA (Recombinant protein)



Detection limit for recombinant GST tagged CTBP1 is approximately 1ng/ml as a capture antibody.

ELISA

Gene Information

Entrez GeneID: [1487](#)**GeneBank
Accession#:** [BC053320](#)**Protein
Accession#:** [AAH53320](#)**Gene Name:** CTBP1**Gene Alias:** BARS,MGC104684**Gene
Description:** C-terminal binding protein 1**Omim ID:** [602618](#)**Gene Ontology:** [Hyperlink](#)

Gene Summary: This gene encodes a protein that binds to the C-terminus of adenovirus E1A proteins. This phosphoprotein is a transcriptional repressor and may play a role during cellular proliferation. This protein and the product of a second closely related gene, CTBP2, can dimerize. Both proteins can also interact with a polycomb group protein complex which participates in regulation of gene expression during development. Alternative splicing of transcripts from this gene results in multiple transcript variants. [provided by RefSeq]

**Other
Designations:** brefeldin A-ribosylated substrate**Gene Pathway**

[Chronic myeloid leukemia](#) [Notch signaling pathway](#) [Pathways in cancer](#)
[Wnt signaling pathway](#)**Related Disease**

[Cerebral Hemorrhage](#) [Genetic Predisposition to Disease](#) [Hypertension](#)
[Intracranial Hemorrhages](#) [Stroke](#) [Subarachnoid Hemorrhage](#)