



SZABO SCANDIC

Part of Europa Biosite

Produktinformation



Forschungsprodukte & Biochemikalien



Zellkultur & Verbrauchsmaterial



Diagnostik & molekulare Diagnostik



Laborgeräte & Service

Weitere Information auf den folgenden Seiten!
See the following pages for more information!



Lieferung & Zahlungsart

siehe unsere [Liefer- und Versandbedingungen](#)

Zuschläge

- Mindermengenzuschlag
- Trockeneiszuschlag
- Gefahrgutzuschlag
- Expressversand

SZABO-SCANDIC HandelsgmbH

Quellenstraße 110, A-1100 Wien

T. +43(0)1 489 3961-0

F. +43(0)1 489 3961-7

mail@szabo-scandic.com

www.szabo-scandic.com

[linkedin.com/company/szaboscandic](https://www.linkedin.com/company/szaboscandic) 

CTBP1 monoclonal antibody (M04), clone 2G11

Catalog # : H00001487-M04

規格 : [100 ug]

[List All](#)

Specification

Product Description: Mouse monoclonal antibody raised against a full-length recombinant CTBP1.

Immunogen: CTBP1 (AAH53320, 1 a.a. ~ 429 a.a) full-length recombinant protein with GST tag. MW of the GST tag alone is 26 KDa.

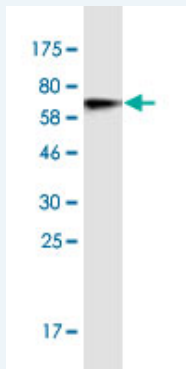
Sequence: MSGVRPPIMNGPLHPRPLVALLDGRDCTVEMPILKDVATVAFCDQSTQ
 EIHEKVLNEAVGALMYHTITLTREDLEKFKALRIIVRIGSGFDNIDIKSAGDL
 GIAVCN/PAASVEETADSTLCHILNLYRRATWLHQALREGTRVQSVEQIR
 EVASGAARIRGETLGIIGLGRVGGAAVALRAKAFGFNVLFYDPYLSDGVER
 ALGLQRVSTLQDLLFHSDCVTLHCGLNEHNHHLINDFTVKQMRQGAFLV
 NTARGGLVDEKALAQALKEGRIRGAALDVHESEPFSSQGPLKDAPNLIC
 TPHAAWYSEQASIEMREEAAREIRRAITGRIPDSLKNCVKNKDHLTAATHW
 ASMDPAVVHPELNGAAYRYPGVVGVAPTGIPAAVEGIVPSAMSLSHGLP
 PVAHPPHAPSPGQTVKPEADRDHASDQL

Host: Mouse

Reactivity: Human

Isotype: IgG1 Kappa

Quality Control Testing: Antibody Reactive Against Recombinant Protein.



Western Blot detection against Immunogen (72.93 KDa) .

Storage Buffer: In 1x PBS, pH 7.4

Storage Instruction: Store at -20°C or lower. Aliquot to avoid repeated freezing and thawing.

Datasheet: [Download](#)

Applications

Western Blot (Recombinant protein)

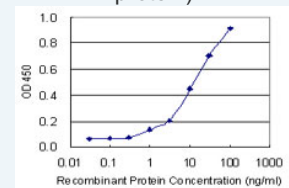
[Protocol Download](#)

Sandwich ELISA (Recombinant protein)

Application Image

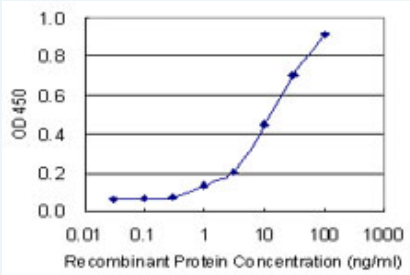
Western Blot (Recombinant protein)

Sandwich ELISA (Recombinant protein)



[enlarge](#)

ELISA



Detection limit for recombinant GST tagged CTBP1 is 0.3 ng/ml as a capture antibody.

 [Protocol Download](#)

ELISA

Gene Information

Entrez GeneID: [1487](#)

GeneBank [BC053320](#)

Accession#:

Protein [AAH53320](#)

Accession#:

Gene Name: CTBP1

Gene Alias: BARS,MGC104684

Gene Description: C-terminal binding protein 1

Description:

Omim ID: [602618](#)

Gene Ontology: [Hyperlink](#)

Gene Summary: This gene encodes a protein that binds to the C-terminus of adenovirus E1A proteins. This phosphoprotein is a transcriptional repressor and may play a role during cellular proliferation. This protein and the product of a second closely related gene, CTBP2, can dimerize. Both proteins can also interact with a polycomb group protein complex which participates in regulation of gene expression during development. Alternative splicing of transcripts from this gene results in multiple transcript variants. [provided by RefSeq]

Other Designations: brefeldin A-ribosylated substrate

Designations:

Gene Pathway

[Chronic myeloid leukemia](#) [Notch signaling pathway](#) [Pathways in cancer](#)
[Wnt signaling pathway](#)

Related Disease

[Cerebral Hemorrhage](#) [Genetic Predisposition to Disease](#) [Hypertension](#)
[Intracranial Hemorrhages](#) [Stroke](#) [Subarachnoid Hemorrhage](#)