



# SZABO SCANDIC

Part of Europa Biosite

## Produktinformation



Forschungsprodukte & Biochemikalien



Zellkultur & Verbrauchsmaterial



Diagnostik & molekulare Diagnostik



Laborgeräte & Service

Weitere Information auf den folgenden Seiten!  
See the following pages for more information!



### Lieferung & Zahlungsart

siehe unsere [Liefer- und Versandbedingungen](#)

### Zuschläge

- Mindermengenzuschlag
- Trockeneiszuschlag
- Gefahrgutzuschlag
- Expressversand

### SZABO-SCANDIC HandelsgmbH

Quellenstraße 110, A-1100 Wien

T. +43(0)1 489 3961-0

F. +43(0)1 489 3961-7

[mail@szabo-scandic.com](mailto:mail@szabo-scandic.com)

[www.szabo-scandic.com](http://www.szabo-scandic.com)

[linkedin.com/company/szaboscandic](https://www.linkedin.com/company/szaboscandic) 

## CTBP2 polyclonal antibody (A01)

Catalog # : H00001488-A01

規格 : [ 50 uL ]

[List All](#)

### Specification

**Product Description:** Mouse polyclonal antibody raised against a full-length recombinant CTBP2.

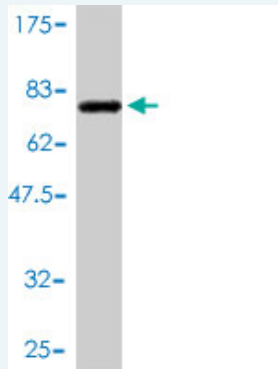
**Immunogen:** CTBP2 (AAH02486, 1 a.a. ~ 445 a.a) full-length recombinant protein with GST tag.

**Sequence:** MALVDKHKVQRQLDRICEGIRPQIMNGPLHPRPLVALLDGRDCTVEMPI LKDLATVAFCD AQSTQEIHEKVLNEAVGAMMYHTITLTREDLEKFKALRVI VRIGSGYDNVDIKAAGELGIAVCNIPSAAVEETADSTICHILNLYRRNTWLY QALREGTRVQSVEQIREVASGAARIRGETLGLIGFGRTGQAVAVRAKAF GFSVIFYDPYLQDGIERSLGVQRVYTLQDLLYQSDCVSLHCNLNEHNHHL INDFTIKQMRQGAFVNAARGGLVDEKALAQALKEGRIRGAALDVHESEP FSFAQGPKDAPNLICTPHTAWYSEQASLEMREAAATEIRRAITGRIPESL RNCVNKEFFVTSAPWSVIDQQAIHPELNGATYRYPPGIVGVAPGGLPAAM EGIIPGGIPVTHNLPTVAHPSQAPSPNQPTKHGDNREHPNEQ

**Host:** Mouse

**Reactivity:** Human

**Quality Control Testing:** Antibody Reactive Against Recombinant Protein.



Western Blot detection against Immunogen (75.06 kDa) .

**Storage Buffer:** 50 % glycerol

**Storage Instruction:** Store at -20°C or lower. Aliquot to avoid repeated freezing and thawing.

**MSDS:** [Download](#)

**Datasheet:** [Download](#)

### Publication Reference

1. [Expression patterns of candidate susceptibility genes HNF1 \$\beta\$  and CtBP2 in prostate cancer: Association with tumor progression.](#) Debiais-Delpech C, Godet J, Pedretti N, Bernard FX, Irani J, Cathelineau X, Cussenot O, Fromont GUrol Oncol. 2013 Dec 11. pii: S1078-1439(13)00349-9. doi: 10.1016/j.urolonc.2013.09.006.

## Applications

Western Blot (Recombinant protein)

 [Protocol Download](#)

ELISA

## Gene Information

Entrez GeneID: [1488](#)

GeneBank Accession#: [BC002486](#)

Protein Accession#: [AAH02486](#)

Gene Name: CTBP2

Gene Alias: -

Gene Description: C-terminal binding protein 2

Omim ID: [602619](#)

Gene Ontology: [Hyperlink](#)

**Gene Summary:** This gene produces alternative transcripts encoding two distinct proteins. One protein is a transcriptional repressor, while the other isoform is a major component of specialized synapses known as synaptic ribbons. Both proteins contain a NAD<sup>+</sup> binding domain similar to NAD<sup>+</sup>-dependent 2-hydroxyacid dehydrogenases. A portion of the 3' untranslated region was used to map this gene to chromosome 21q21.3; however, it was noted that similar loci elsewhere in the genome are likely. Blast analysis shows that this gene is present on chromosome 10. [provided by RefSeq]

Other Designations: OTTHUMP00000020699,OTTHUMP00000020701,ribeye

## Gene Pathway

[Chronic myeloid leukemia](#) [Notch signaling pathway](#) [Pathways in cancer](#)  
[Wnt signaling pathway](#)

## Related Disease

[Alzheimer Disease](#) [Celiac Disease](#) [Disease Progression](#) [Genetic Predisposition to Disease](#)  
[Neoplasm Recurrence, Local](#) [Prostate cancer](#) [Prostatic Hyperplasia](#) [Prostatic Neoplasms](#)  
[Tobacco Use Disorder](#)