



# SZABO SCANDIC

Part of Europa Biosite

## Produktinformation



Forschungsprodukte & Biochemikalien



Zellkultur & Verbrauchsmaterial



Diagnostik & molekulare Diagnostik



Laborgeräte & Service

Weitere Information auf den folgenden Seiten!  
See the following pages for more information!



### Lieferung & Zahlungsart

siehe unsere [Liefer- und Versandbedingungen](#)

### Zuschläge

- Mindermengenzuschlag
- Trockeneiszuschlag
- Gefahrgutzuschlag
- Expressversand

### SZABO-SCANDIC HandelsgmbH

Quellenstraße 110, A-1100 Wien

T. +43(0)1 489 3961-0

F. +43(0)1 489 3961-7

[mail@szabo-scandic.com](mailto:mail@szabo-scandic.com)

[www.szabo-scandic.com](http://www.szabo-scandic.com)

[linkedin.com/company/szaboscandic](https://www.linkedin.com/company/szaboscandic) 

## CTBP2 polyclonal antibody (A02)

Catalog # : H00001488-A02

規格 : [ 50 uL ]

[List All](#)

### Specification

**Product Description:** Mouse polyclonal antibody raised against a partial recombinant CTBP2.

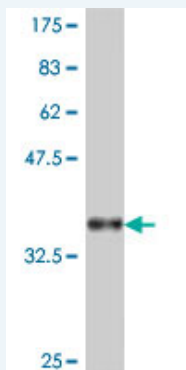
**Immunogen:** CTBP2 (NP\_001320, 138 a.a. ~ 239 a.a) partial recombinant protein with GST tag.

**Sequence:** TICHILNLYRRNTWLYQALREGTRVQSVEQIREVASGAARIRGETLGLIGF  
GRTGQAVAVRAKAFGFVIFYPYLQDGIERSLGVQRVYTLQDLLYQSD  
CV

**Host:** Mouse

**Reactivity:** Human

**Quality Control Testing:** Antibody Reactive Against Recombinant Protein.



Western Blot detection against Immunogen (37.33 kDa) .

**Storage Buffer:** 50 % glycerol

**Storage Instruction:** Store at -20°C or lower. Aliquot to avoid repeated freezing and thawing.

**MSDS:** [Download](#)

**Datasheet:** [Download](#)

### Applications

**Western Blot (Recombinant protein)**

[Protocol Download](#)

**ELISA**

### Gene Information

**Entrez GeneID:** [1488](#)

**GeneBank Accession#:** [NM\\_001329](#)

### Application Image

Western Blot (Recombinant protein)

ELISA

**Protein Accession#:** [NP\\_001320](#)

**Gene Name:** CTBP2

**Gene Alias:** -

**Gene Description:** C-terminal binding protein 2

**Omim ID:** [602619](#)

**Gene Ontology:** [Hyperlink](#)

**Gene Summary:** This gene produces alternative transcripts encoding two distinct proteins. One protein is a transcriptional repressor, while the other isoform is a major component of specialized synapses known as synaptic ribbons. Both proteins contain a NAD<sup>+</sup> binding domain similar to NAD<sup>+</sup>-dependent 2-hydroxyacid dehydrogenases. A portion of the 3' untranslated region was used to map this gene to chromosome 21q21.3; however, it was noted that similar loci elsewhere in the genome are likely. Blast analysis shows that this gene is present on chromosome 10. [provided by RefSeq]

**Other Designations:** OTTHUMP00000020699,OTTHUMP00000020701,ribeye

#### Gene Pathway

[Chronic myeloid leukemia](#) [Notch signaling pathway](#) [Pathways in cancer](#)  
[Wnt signaling pathway](#)

#### Related Disease

[Alzheimer Disease](#) [Celiac Disease](#) [Disease Progression](#) [Genetic Predisposition to Disease](#)  
[Neoplasm Recurrence, Local](#) [Prostate cancer](#) [Prostatic Hyperplasia](#) [Prostatic Neoplasms](#)  
[Tobacco Use Disorder](#)

[服務條款](#) | [隱私權政策](#) | [著作及商標](#) | [網站地圖](#)

©2016 亞諾法生技股份有限公司 Abnova Corporation. 版權所有.