



SZABO SCANDIC

Part of Europa Biosite

Produktinformation



Forschungsprodukte & Biochemikalien



Zellkultur & Verbrauchsmaterial



Diagnostik & molekulare Diagnostik



Laborgeräte & Service

Weitere Information auf den folgenden Seiten!
See the following pages for more information!



Lieferung & Zahlungsart

siehe unsere [Liefer- und Versandbedingungen](#)

Zuschläge

- Mindermengenzuschlag
- Trockeneiszuschlag
- Gefahrgutzuschlag
- Expressversand

SZABO-SCANDIC HandelsgmbH

Quellenstraße 110, A-1100 Wien

T. +43(0)1 489 3961-0

F. +43(0)1 489 3961-7

mail@szabo-scandic.com

www.szabo-scandic.com

[linkedin.com/company/szaboscandic](https://www.linkedin.com/company/szaboscandic) 



CTBP2 purified MaxPab mouse polyclonal antibody (B01P) MaxPab®

Catalog # : H00001488-B01P

規格 : [50 ug]

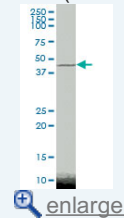
[List All](#)

Specification

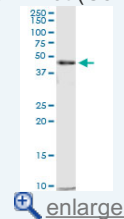
Product Description:	Mouse polyclonal antibody raised against a full-length human CTBP2 protein.
Immunogen:	CTBP2 (AAH37900.1, 1 a.a. ~ 513 a.a) full-length human protein.
Sequence:	MRPGLPGPTGLCAQTSRRGQKSVLKQKESCGIWQLYHFLSRKQEPRW EPCVSGSSSGDGAVADLADELRGYPALCCTLPVHSYRSWAGIRPQIMNG PLHPRPLVALLDGRDCTVEMPILKDLATVAFCDQSTQEIEKVLNEAVG AMMYHTITLTREDLEKFKALRVIVRIGSGYDNVDIKAAGELGIAVCNIPSAA VEETADSTICHILNLYRRNTWLYQALREGTRVQSVEQIREVASGAARIRG ETLGLIGFGRTGQAVAVRAKAFGFSVIFYDPYLQDGIERSLGVQRVYTL QDLLYQSDCVSLHCNLEHNHHLINDFTIKQMRQGAFLVNAARGGLVDE KALAQALKEGRIRRAALDVHESEPFSAQGPLKDAPNLICTPHTAWYSEQ ASLEMREAAATEIRRAITGRIPESLRNCVNKEFFVT SAPWSVIDQQAIHPEL NGATYRPPGIVGVAPGGLPAAMEGIIIPGGIPVTHNLPVAHPSQAPSPN QPTKHGDNREHPNEQ
Host:	Mouse
Reactivity:	Human
Quality Control Testing:	Antibody reactive against mammalian transfected lysate.
Storage Buffer:	In 1x PBS, pH 7.4
Storage Instruction:	Store at -20°C or lower. Aliquot to avoid repeated freezing and thawing.
MSDS:	 Download
Datasheet:	 Download

Application Image

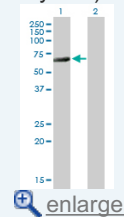
Western Blot (Tissue lysate)



Western Blot (Cell lysate)

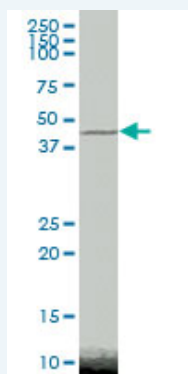


Western Blot (Transfected lysate)




Applications

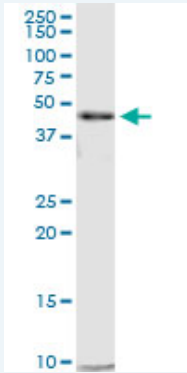
Western Blot (Tissue lysate)



CTBP2 MaxPab polyclonal antibody. Western Blot analysis of CTBP2 expression in human pancreas.

 [Protocol Download](#)

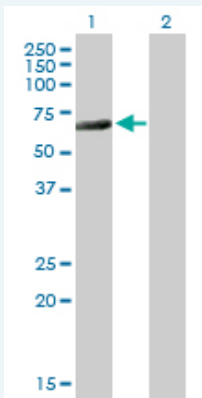
Western Blot (Cell lysate)



CTBP2 MaxPab polyclonal antibody. Western Blot analysis of CTBP2 expression in HepG2.

 [Protocol Download](#)

Western Blot (Transfected lysate)



Western Blot analysis of CTBP2 expression in transfected 293T cell line ([H00001488-T01](#)) by CTBP2 MaxPab polyclonal antibody.

Lane 1: CTBP2 transfected lysate(56.43 KDa).

Lane 2: Non-transfected lysate.

 [Protocol Download](#)

Gene Information

Entrez GeneID: [1488](#)

GeneBank [BC037900](#)
Accession#:

Protein [AAH37900.1](#)
Accession#:

Gene Name: CTBP2

Gene Alias: -

Gene Description: C-terminal binding protein 2

Omim ID: [602619](#)

Gene Ontology: [Hyperlink](#)

Gene Summary: This gene produces alternative transcripts encoding two distinct proteins. One protein is a transcriptional repressor, while the other isoform is a major component of specialized synapses known as synaptic ribbons. Both proteins contain a NAD⁺ binding domain similar to NAD⁺-dependent 2-hydroxyacid dehydrogenases. A portion of the 3' untranslated region was used to map this gene to chromosome 21q21.3; however, it was noted that similar loci elsewhere in the

genome are likely. Blast analysis shows that this gene is present on chromosome 10. [provided by RefSeq]

Other Designations: OTTHUMP00000020699,OTTHUMP00000020701,ribeye

Gene Pathway

[Chronic myeloid leukemia](#) [Notch signaling pathway](#) [Pathways in cancer](#)
[Wnt signaling pathway](#)

Related Disease

[Alzheimer Disease](#) [Celiac Disease](#) [Disease Progression](#) [Genetic Predisposition to Disease](#)
[Neoplasm Recurrence, Local](#) [Prostate cancer](#) [Prostatic Hyperplasia](#) [Prostatic Neoplasms](#)
[Tobacco Use Disorder](#)

[服務條款](#) | [隱私權政策](#) | [著作及商標](#) | [網站地圖](#)

©2016 亞諾法生技股份有限公司 Abnova Corporation. 版權所有.