



SZABO SCANDIC

Part of Europa Biosite

Produktinformation



Forschungsprodukte & Biochemikalien



Zellkultur & Verbrauchsmaterial



Diagnostik & molekulare Diagnostik



Laborgeräte & Service

Weitere Information auf den folgenden Seiten!
See the following pages for more information!



Lieferung & Zahlungsart

siehe unsere [Liefer- und Versandbedingungen](#)

Zuschläge

- Mindermengenzuschlag
- Trockeneiszuschlag
- Gefahrgutzuschlag
- Expressversand

SZABO-SCANDIC HandelsgmbH

Quellenstraße 110, A-1100 Wien

T. +43(0)1 489 3961-0

F. +43(0)1 489 3961-7

mail@szabo-scandic.com

www.szabo-scandic.com

[linkedin.com/company/szaboscandic](https://www.linkedin.com/company/szaboscandic) 

CTBP2 purified MaxPab rabbit polyclonal antibody (D01P) MaxPab®

Catalog # : H00001488-D01P

規格 : [100 ug]

[List All](#)

Specification

Product Description: Rabbit polyclonal antibody raised against a full-length human CTBP2 protein.

Immunogen: CTBP2 (AAH37900.1, 1 a.a. ~ 513 a.a) full-length human protein.

Sequence:
 MRPGLPGPTGLCAQTSRRGQKSVLKQKESCGIWQLYHFLSRKQEPRW
 EPCVSGSSSGDGAVADLADELRGYPALCCTLPVHSYRSWAGIRPQIMNG
 PLHPRPLVALLDGRDCTVEMPILKDLATVAFCDQSTQEIEKVLNEAVG
 AMMYHTITLTREDLEKFKALRVIVRIGSGYDNVDIKAAGELGIAVCNIPSAA
 VEETADSTICHILNLYRRNTWLYQALREGTRVQSVEQIREVASGAARIG
 ETLGLIGFGRTGQAVAVRAKAFGFSVIFYDPYLQDGIERSLGVQRVYTL
 QDLLYQSDCVSLHCNLEHNHHLINDFTIKQMRQGAFLVNAARGGLVDE
 KALAQALKEGRIRRAALDVHESEPFSAQGPLKDAPNLICTPHTAWYSEQ
 ASLEMREAAATEIRRAITGRIPESLRNCVNKEFFVT SAPWSVIDQQAIHPEL
 NGATYRPPGIVGVAPGGLPAAMEGIIIPGGIPVTHNLPVAHPSQAPSPN
 QPTKHGDNREHPNEQ

Host: Rabbit

Reactivity: Human

Quality Control Testing: Antibody reactive against mammalian transfected lysate.

Storage Buffer: In 1x PBS, pH 7.4

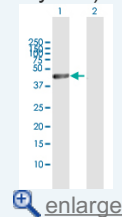
Storage Instruction: Store at -20°C or lower. Aliquot to avoid repeated freezing and thawing.

MSDS: [Download](#)

Datasheet: [Download](#)

Application Image

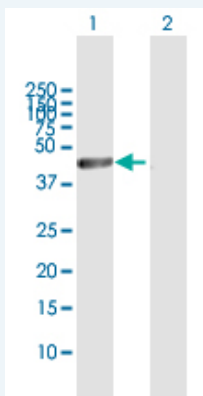
Western Blot (Transfected lysate)



[enlarge](#)

Applications

Western Blot (Transfected lysate)



Western Blot analysis of CTBP2 expression in transfected 293T cell line (H00001488-T01) by CTBP2 MaxPab polyclonal antibody.

Lane 1: CTBP2 transfected lysate(56.20 KDa).

Gene Information

Entrez GeneID: [1488](#)

**GeneBank
Accession#:** [BC037900](#)

**Protein
Accession#:** [AAH37900.1](#)

Gene Name: CTBP2

Gene Alias: -

**Gene
Description:** C-terminal binding protein 2

Omim ID: [602619](#)

Gene Ontology: [Hyperlink](#)

Gene Summary: This gene produces alternative transcripts encoding two distinct proteins. One protein is a transcriptional repressor, while the other isoform is a major component of specialized synapses known as synaptic ribbons. Both proteins contain a NAD⁺ binding domain similar to NAD⁺-dependent 2-hydroxyacid dehydrogenases. A portion of the 3' untranslated region was used to map this gene to chromosome 21q21.3; however, it was noted that similar loci elsewhere in the genome are likely. Blast analysis shows that this gene is present on chromosome 10. [provided by RefSeq]

**Other
Designations:** OTTHUMP00000020699,OTTHUMP00000020701,ribeye

Gene Pathway

[Chronic myeloid leukemia](#) [Notch signaling pathway](#) [Pathways in cancer](#)
[Wnt signaling pathway](#)

Related Disease

[Alzheimer Disease](#) [Celiac Disease](#) [Disease Progression](#) [Genetic Predisposition to Disease](#)
[Neoplasm Recurrence, Local](#) [Prostate cancer](#) [Prostatic Hyperplasia](#) [Prostatic Neoplasms](#)
[Tobacco Use Disorder](#)