



SZABO SCANDIC

Part of Europa Biosite

Produktinformation



Forschungsprodukte & Biochemikalien



Zellkultur & Verbrauchsmaterial



Diagnostik & molekulare Diagnostik



Laborgeräte & Service

Weitere Information auf den folgenden Seiten!
See the following pages for more information!



Lieferung & Zahlungsart

siehe unsere [Liefer- und Versandbedingungen](#)

Zuschläge

- Mindermengenzuschlag
- Trockeneiszuschlag
- Gefahrgutzuschlag
- Expressversand

SZABO-SCANDIC HandelsgmbH

Quellenstraße 110, A-1100 Wien

T. +43(0)1 489 3961-0

F. +43(0)1 489 3961-7

mail@szabo-scandic.com

www.szabo-scandic.com

[linkedin.com/company/szaboscandic](https://www.linkedin.com/company/szaboscandic) 

CTBP2 293T Cell Transient Overexpression Lysate(Denatured)

Catalog # : H00001488-T01

規格 : [100 uL]

[List All](#)

Specification

Transfected Cell Line: 293T

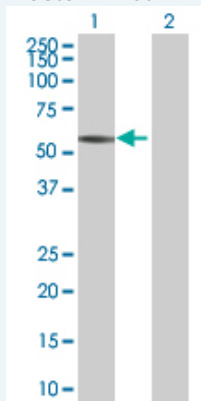
Plasmid: pCMV-CTBP2 full-length

Host: Human

Theoretical MW (kDa): 56.54

Quality Control Testing: Transient overexpression cell lysate was tested with Anti-CTBP2 antibody ([H00001488-B01](#)) by Western Blots.

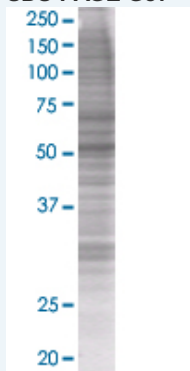
Western Blot



Lane 1: CTBP2 transfected lysate (56.2 KDa)

Lane 2: Non-transfected lysate.

SDS-PAGE Gel



CTBP2 transfected lysate.

Storage Buffer: 1X Sample Buffer (50 mM Tris-HCl, 2% SDS, 10% glycerol, 300 mM 2-mercaptoethanol, 0.01% Bromophenol blue)

Storage Instruction: Store at -80°C. Aliquot to avoid repeated freezing and thawing.

MSDS:  [Download](#)

Applications

Application Image

Western Blot

Western Blot

Gene Information

Entrez GeneID: [1488](#)

GeneBank [BC037900](#)
Accession#:

Protein [AAH37900](#)
Accession#:

Gene Name: CTBP2

Gene Alias: -

Gene Description: C-terminal binding protein 2

Omim ID: [602619](#)

Gene Ontology: [Hyperlink](#)

Gene Summary: This gene produces alternative transcripts encoding two distinct proteins. One protein is a transcriptional repressor, while the other isoform is a major component of specialized synapses known as synaptic ribbons. Both proteins contain a NAD⁺ binding domain similar to NAD⁺-dependent 2-hydroxyacid dehydrogenases. A portion of the 3' untranslated region was used to map this gene to chromosome 21q21.3; however, it was noted that similar loci elsewhere in the genome are likely. Blast analysis shows that this gene is present on chromosome 10. [provided by RefSeq]

Other Designations: OTTHUMP00000020699,OTTHUMP00000020701,ribeye

Gene Pathway

[Chronic myeloid leukemia](#) [Notch signaling pathway](#) [Pathways in cancer](#)
[Wnt signaling pathway](#)

Related Disease

[Alzheimer Disease](#) [Celiac Disease](#) [Disease Progression](#) [Genetic Predisposition to Disease](#)
[Neoplasm Recurrence, Local](#) [Prostate cancer](#) [Prostatic Hyperplasia](#) [Prostatic Neoplasms](#)
[Tobacco Use Disorder](#)