



SZABO SCANDIC

Part of Europa Biosite

Produktinformation



Forschungsprodukte & Biochemikalien



Zellkultur & Verbrauchsmaterial



Diagnostik & molekulare Diagnostik



Laborgeräte & Service

Weitere Information auf den folgenden Seiten!
See the following pages for more information!



Lieferung & Zahlungsart

siehe unsere [Liefer- und Versandbedingungen](#)

Zuschläge

- Mindermengenzuschlag
- Trockeneiszuschlag
- Gefahrgutzuschlag
- Expressversand

SZABO-SCANDIC HandelsgmbH

Quellenstraße 110, A-1100 Wien

T. +43(0)1 489 3961-0

F. +43(0)1 489 3961-7

mail@szabo-scandic.com

www.szabo-scandic.com

[linkedin.com/company/szaboscandic](https://www.linkedin.com/company/szaboscandic) 

CTF1 purified MaxPab rabbit polyclonal antibody (D01P) MaxPab®

Catalog # : H00001489-D01P

規格 : [100 ug]

[List All](#)

Specification

Product Description: Rabbit polyclonal antibody raised against a full-length human CTF1 protein.

Immunogen: CTF1 (NP_001321.1, 1 a.a. ~ 201 a.a) full-length human protein.

Sequence:
MSRREGSLEDPQTDDSSVLLPHLEAKIRQTHSLAHLTKYAEQLLQEYV
QLQGDPFGLPSFSPPRLPVAGLSAPAPSHAGLPVHERLRDAAALAALP
PLLDVAVCRRQAELNPRAPRLLRREDAARQARALGAAVEALLAALGAAN
RGPRAEPPAATASAASATGVFPAKVLGLRVCGLYREWLSRTEGDLGQL
LPGGSA

Host: Rabbit

Reactivity: Human

Quality Control Testing: Antibody reactive against mammalian transfected lysate.

Storage Buffer: In 1x PBS, pH 7.4

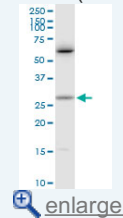
Storage Instruction: Store at -20°C or lower. Aliquot to avoid repeated freezing and thawing.

MSDS: [Download](#)

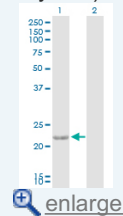
Datasheet: [Download](#)

Application Image

Western Blot (Cell lysate)

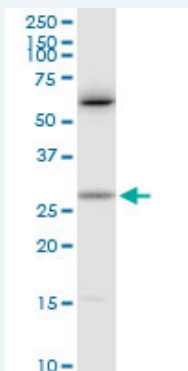


Western Blot (Transfected lysate)



Applications

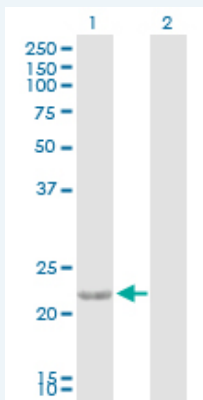
Western Blot (Cell lysate)



CTF1 MaxPab rabbit polyclonal antibody. Western Blot analysis of CTF1 expression in Jurkat.

[Protocol Download](#)

Western Blot (Transfected lysate)



Western Blot analysis of CTF1 expression in transfected 293T cell line ([H00001489-T02](#)) by CTF1 MaxPab polyclonal antibody.

Lane 1: CTF1 transfected lysate(21.20 KDa).
Lane 2: Non-transfected lysate.

 [Protocol Download](#)

Gene Information

Entrez GeneID: [1489](#)

GeneBank Accession#: [NM_001330](#)

Protein Accession#: [NP_001321.1](#)

Gene Name: CTF1

Gene Alias: CT-1,CT1

Gene Description: [cardiotrophin 1](#)

Omim ID: [600435](#)

Gene Ontology: [Hyperlink](#)

Gene Summary: The protein encoded by this gene is a secreted cytokine that induces cardiac myocyte hypertrophy in vitro. It has been shown to bind and activate the ILST/gp130 receptor. Two transcript variants encoding different isoforms have been found for this gene. [provided by RefSeq]

Other Designations: [cardiophin 1](#)

Gene Pathway

[Cytokine-cytokine receptor interaction](#) [Jak-STAT signaling pathway](#)

Related Disease

[Cardiomyopathy, Dilated](#) [Cardiovascular Diseases](#) [Diabetes Mellitus, Type 2](#) [Edema](#)