



# SZABO SCANDIC

Part of Europa Biosite

## Produktinformation



Forschungsprodukte & Biochemikalien



Zellkultur & Verbrauchsmaterial



Diagnostik & molekulare Diagnostik



Laborgeräte & Service

Weitere Information auf den folgenden Seiten!  
See the following pages for more information!



### Lieferung & Zahlungsart

siehe unsere [Liefer- und Versandbedingungen](#)

### Zuschläge

- Mindermengenzuschlag
- Trockeneiszuschlag
- Gefahrgutzuschlag
- Expressversand

### SZABO-SCANDIC HandelsgmbH

Quellenstraße 110, A-1100 Wien

T. +43(0)1 489 3961-0

F. +43(0)1 489 3961-7

[mail@szabo-scandic.com](mailto:mail@szabo-scandic.com)

[www.szabo-scandic.com](http://www.szabo-scandic.com)

[linkedin.com/company/szaboscandic](https://www.linkedin.com/company/szaboscandic) 

## CTGF (Human) Matched Antibody Pair

Catalog # : H00001490-AP41

規格 : [ 1 Set ]

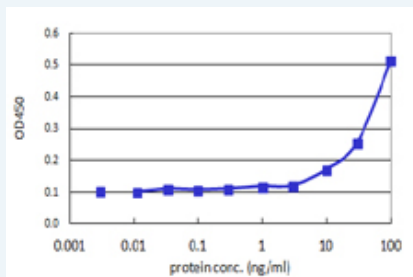
[List All](#)

### Specification

**Product Description:** This antibody pair set comes with matched antibody pair to detect and quantify protein level of human CTGF.

**Reactivity:** Human

**Quality Control Testing:** Standard curve using recombinant protein ( H00001490-P01 ) as an analyte.



Sandwich ELISA detection sensitivity ranging from 10 ng/ml to 100 ng/ml.

**Supplied Product:** Antibody pair set content:  
 1. Capture antibody: mouse monoclonal anti-CTGF, IgG2b Kappa (100 ug)  
 2. Detection antibody: biotinylated mouse monoclonal anti-CTGF, IgG2b Kappa (50 ug)  
 \*Reagents are sufficient for at least 3-5 x 96 well plates using recommended protocols.

**Storage Instruction:** Store reagents of the antibody pair set at -20°C or lower. Please aliquot to avoid repeated freeze thaw cycle. Reagents should be returned to -20°C storage immediately after use.

### Applications

ELISA Pair (Recombinant protein)

 [Protocol Download](#)

### Gene Information

**Entrez GeneID:** [1490](#)

**Gene Name:** CTGF

**Gene Alias:** CCN2,HCS24,IGFBP8,MGC102839,NOV2

**Gene Description:** connective tissue growth factor

**Omim ID:** [121009](#)

**Gene Ontology:** [Hyperlink](#)

**Other:** OTTHUMP00000017213,hypertrophic chondrocyte-specific protein

**Designations:** 24,insulin-like growth factor-binding protein 8

---

### **Related Disease**

---

[Adenocarcinoma](#) [Aortic Valve Stenosis](#) [Biliary Atresia](#) [Calcinosis](#) [Death, Sudden](#)  
[Diabetes Mellitus, Type 1](#) [Diabetic Nephropathies](#) [Disease Susceptibility](#)  
[Esophageal Neoplasms](#) [Fibrosis](#) [Genetic Predisposition to Disease](#) [Hypoglycemia](#)  
[Inflammation](#) [Liver Cirrhosis](#) [Lung Diseases, Interstitial](#) [Lung Neoplasms](#)  
[Ovarian Neoplasms](#) [Pulmonary Disease, Chronic Obstructive](#) [Schistosomiasis](#)

**... see more**

---

[服務條款](#) | [隱私權政策](#) | [著作及商標](#) | [網站地圖](#)

©2016 亞諾法生技股份有限公司 Abnova Corporation. 版權所有.