



# SZABO SCANDIC

Part of Europa Biosite

## Produktinformation



Forschungsprodukte & Biochemikalien



Zellkultur & Verbrauchsmaterial



Diagnostik & molekulare Diagnostik



Laborgeräte & Service

Weitere Information auf den folgenden Seiten!  
See the following pages for more information!



### Lieferung & Zahlungsart

siehe unsere [Liefer- und Versandbedingungen](#)

### Zuschläge

- Mindermengenzuschlag
- Trockeneiszuschlag
- Gefahrgutzuschlag
- Expressversand

### SZABO-SCANDIC HandelsgmbH

Quellenstraße 110, A-1100 Wien

T. +43(0)1 489 3961-0

F. +43(0)1 489 3961-7

[mail@szabo-scandic.com](mailto:mail@szabo-scandic.com)

[www.szabo-scandic.com](http://www.szabo-scandic.com)

[linkedin.com/company/szaboscandic](https://www.linkedin.com/company/szaboscandic) 

## CTGF monoclonal antibody (M01), clone 2C11

Catalog # : H00001490-M01

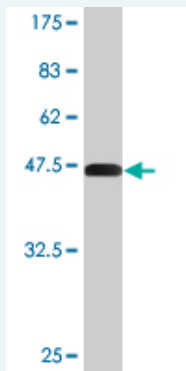
規格 : [ 100 ug ]

[List All](#)

### Specification

<b>Product Description:</b>	Mouse monoclonal antibody raised against a full-length recombinant CTGF.
<b>Immunogen:</b>	CTGF (NP_001892.1, 31 a.a. ~ 251 a.a) full-length recombinant protein with GST tag. MW of the GST tag alone is 26 KDa.
<b>Sequence:</b>	GPCRCPDEPAPRPCAGVSLVLDGCGCCRVCAKQLGELCTERDPDCPH KGLFCDFGSPANRKIGVCTAKDGAPCIFGGTVYRSGESFQSSCKYQCT CLDGAVGCMPLCSMDVRLPSPDCPFPRRVKLPKGKCEEVWCDEPKDQ TVVGPALAAAYRLEDTFGPDPTMIRANCLVQTTEWSACSKTCGMGISTRV TNDNASCRLEKQSRLCMVRPCEADLEENIK
<b>Host:</b>	Mouse
<b>Reactivity:</b>	Human
<b>Isotype:</b>	IgG2b Kappa

**Quality Control Testing:** Antibody Reactive Against Recombinant Protein.



Western Blot detection against Immunogen (49.94 KDa) .

**Storage Buffer:** In 1x PBS, pH 7.4

**Storage Instruction:** Store at -20°C or lower. Aliquot to avoid repeated freezing and thawing.

**MSDS:** [Download](#)

**Datasheet:** [Download](#)

### Publication Reference

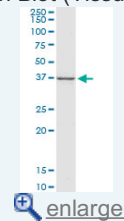
- Comparative Analyses of the Secretome from Dedifferentiated and Redifferentiated Adult Articular Chondrocytes.  
Polacek M, Bruun JA, Johansen O, Martinez I. Cartilage April 2011 vol. 2 no. 2 186-196

### Applications

**Western Blot (Tissue lysate)**

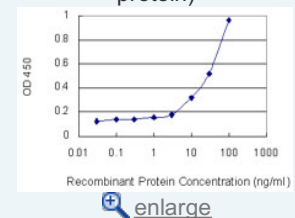
### Application Image

Western Blot (Tissue lysate)

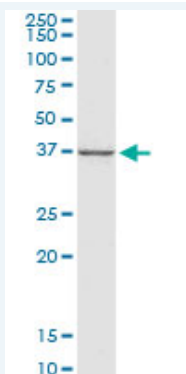


Western Blot (Recombinant protein)

Sandwich ELISA (Recombinant protein)



ELISA



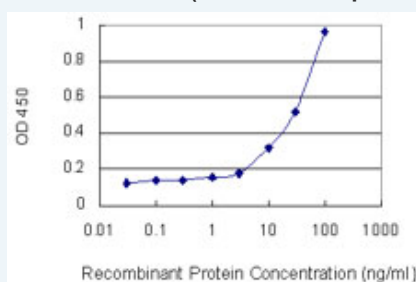
CTGF monoclonal antibody (M01), clone 2C11. Western Blot analysis of CTGF expression in human liver.

 [Protocol Download](#)


#### Western Blot (Recombinant protein)

 [Protocol Download](#)

#### Sandwich ELISA (Recombinant protein)



Detection limit for recombinant GST tagged CTGF is 1 ng/ml as a capture antibody.

 [Protocol Download](#)

#### ELISA

#### Gene Information

**Entrez GeneID:** [1490](#)

**GeneBank** [NM\\_001901](#)

**Accession#:**

**Protein** [NP\\_001892.1](#)

**Accession#:**

**Gene Name:** CTGF

**Gene Alias:** CCN2,HCS24,IGFBP8,MGC102839,NOV2

**Gene Description:** connective tissue growth factor

**Omim ID:** [121009](#)

**Gene Ontology:** [Hyperlink](#)

**Other Designations:** OTTHUMP00000017213,hypertrophic chondrocyte-specific protein 24,insulin-like growth factor-binding protein 8

#### Related Disease

[Adenocarcinoma](#) [Aortic Valve Stenosis](#) [Biliary Atresia](#) [Calcinosis](#) [Death, Sudden](#) [Diabetes Mellitus, Type 1](#) [Diabetic Nephropathies](#) [Disease Susceptibility](#) [Esophageal Neoplasms](#) [Fibrosis](#) [Genetic Predisposition to Disease](#) [Hypoglycemia](#) [Inflammation](#) [Liver Cirrhosis](#) [Lung Diseases, Interstitial](#) [Lung Neoplasms](#) [Ovarian Neoplasms](#) [Pulmonary Disease, Chronic Obstructive](#) [Schistosomiasis](#)

[... see more](#)

---

[服務條款](#) | [隱私權政策](#) | [著作及商標](#) | [網站地圖](#)

©2016 亞諾法生技股份有限公司 Abnova Corporation. 版權所有.