



# SZABO SCANDIC

Part of Europa Biosite

## Produktinformation



Forschungsprodukte & Biochemikalien



Zellkultur & Verbrauchsmaterial



Diagnostik & molekulare Diagnostik



Laborgeräte & Service

Weitere Information auf den folgenden Seiten!  
See the following pages for more information!



### Lieferung & Zahlungsart

siehe unsere [Liefer- und Versandbedingungen](#)

### Zuschläge

- Mindermengenzuschlag
- Trockeneiszuschlag
- Gefahrgutzuschlag
- Expressversand

### SZABO-SCANDIC HandelsgmbH

Quellenstraße 110, A-1100 Wien

T. +43(0)1 489 3961-0

F. +43(0)1 489 3961-7

[mail@szabo-scandic.com](mailto:mail@szabo-scandic.com)

[www.szabo-scandic.com](http://www.szabo-scandic.com)

[linkedin.com/company/szaboscandic](https://www.linkedin.com/company/szaboscandic) 

## CTH (Human) Matched Antibody Pair

Catalog # : H00001491-AP52

規格 : [ 1 Set ]

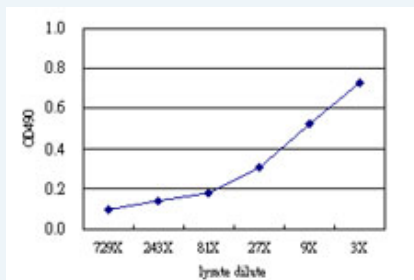
List All

### Specification

**Product Description:** This antibody pair set comes with matched antibody pair to detect and quantify protein level of human CTH.

**Reactivity:** Human

**Quality Control Testing:** Standard curve using CTH 293T overexpression lysate (non-denatured) as an analyte.



Sandwich ELISA detection sensitivity ranging from approximately 243x to 3x dilution of the CTH 293T overexpression lysate (non-denatured).

**Supplied Product:** Antibody pair set content:  
 1. Capture antibody: mouse monoclonal anti-CTH (100 ug)  
 2. Detection antibody: rabbit purified polyclonal anti-CTH (50 ug)  
 \*Reagents are sufficient for at least 3-5 x 96 well plates using recommended protocols.

**Storage Instruction:** Store reagents of the antibody pair set at -20°C or lower. Please aliquot to avoid repeated freeze thaw cycle. Reagents should be returned to -20°C storage immediately after use.

**MSDS:**  [Download](#)

### Applications

ELISA Pair (Transfected lysate)

 [Protocol Download](#)

### Gene Information

**Entrez GeneID:** [1491](#)

**Gene Name:** CTH

**Gene Alias:** MGC9471

**Gene Description:** cystathionase (cystathionine gamma-lyase)

**Omim ID:** [219500](#), [607657](#)

**Gene Ontology:** [Hyperlink](#)

### Application Image

ELISA Pair (Transfected lysate)

**Gene Summary:** This gene encodes a cytoplasmic enzyme in the trans-sulfuration pathway that converts cystathione derived from methionine into cysteine. Glutathione synthesis in the liver is dependent upon the availability of cysteine. Mutations in this gene cause cystathioninuria. Alternative splicing of this gene results in two transcript variants encoding different isoforms. [provided by RefSeq]

**Other Designations:** OTTHUMP00000010945, OTTHUMP00000010946, cystathionase, cysteine desulfhydrase, gamma-cystathionase, homoserine deaminase, homoserine dehydratase

### Gene Pathway

[Cysteine and methionine metabolism](#) [Glycine, serine and threonine metabolism](#)  
[Metabolic pathways](#) [Nitrogen metabolism](#) [Selenoamino acid metabolism](#)

### Related Disease

[Atherosclerosis](#) [Atherosclerosis](#) [Calcinosis](#) [Cardiovascular Diseases](#) [Carotid Stenosis](#)  
[Cleft Lip](#) [Cleft Palate](#) [Coronary Artery Disease](#) [Diabetes Mellitus, Type 2](#) [Edema](#)  
[Genetic Predisposition to Disease](#) [Hypertension](#) [Infertility, Female](#) [Lung Neoplasms](#)  
[Pulmonary Disease, Chronic Obstructive](#) [Spinal Dysraphism](#) [Urinary Bladder Neoplasms](#)  
[Werner syndrome](#)

[服務條款](#) | [隱私權政策](#) | [著作及商標](#) | [網站地圖](#)

©2016 亞諾法生技股份有限公司 Abnova Corporation. 版權所有.