



SZABO SCANDIC

Part of Europa Biosite

Produktinformation



Forschungsprodukte & Biochemikalien



Zellkultur & Verbrauchsmaterial



Diagnostik & molekulare Diagnostik



Laborgeräte & Service

Weitere Information auf den folgenden Seiten!
See the following pages for more information!



Lieferung & Zahlungsart

siehe unsere [Liefer- und Versandbedingungen](#)

Zuschläge

- Mindermengenzuschlag
- Trockeneiszuschlag
- Gefahrgutzuschlag
- Expressversand

SZABO-SCANDIC HandelsgmbH

Quellenstraße 110, A-1100 Wien

T. +43(0)1 489 3961-0

F. +43(0)1 489 3961-7

mail@szabo-scandic.com

www.szabo-scandic.com

[linkedin.com/company/szaboscandic](https://www.linkedin.com/company/szaboscandic) 



CTH purified MaxPab mouse polyclonal antibody (B01P) MaxPab®

Catalog # : H00001491-B01P

規格 : [50 ug]

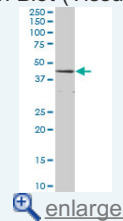
[List All](#)

Specification

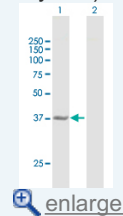
Product Description:	Mouse polyclonal antibody raised against a full-length human CTH protein.
Immunogen:	CTH (NP_001893.2, 1 a.a. ~ 405 a.a) full-length human protein.
Sequence:	MQEKDASSQGFLPHFQHFATQAIHVGQDPEQWTSRAVVPPISLSTTFK QGAPGQHSGFEYSRSGNPTRNCKLEKAVAALDGAKYCLAFASGLAATVTI THLLKAGDQIICMDDVYGGTNRIFYRQVASEFGLKISFVDCSKIKLLEAIT PETKLVWIETPTNPTQKVIDIEGCAHIVHKHGDIIILVVDNTFMSPYFQRPLA LGADISMYSATKYMNGHSDVVMGLVSVNCESLHNRLRFLQNSLGAVPSPI DCYLCNRGLKTLHVRMEKHFKNGMAVAQFLESNPWVEKVYIPGLPSHPQ HELVKRQCTGCTGMVTFYIKGTLQHAEIFLKNLKLFTLAESLGGFESLAE LPAIMTHASVLKNDRDVLGISDTLIRLSVGLLEDEEDLLEDLDQALKAHPP SGSHS
Host:	Mouse
Reactivity:	Human
Quality Control Testing:	Antibody reactive against mammalian transfected lysate.
Storage Buffer:	In 1x PBS, pH 7.4
Storage Instruction:	Store at -20°C or lower. Aliquot to avoid repeated freezing and thawing.
MSDS:	 Download
Datasheet:	 Download

Application Image

Western Blot (Tissue lysate)

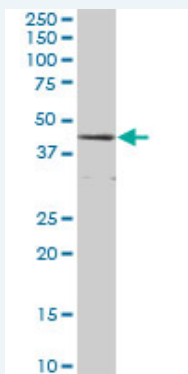


Western Blot (Transfected lysate)



Applications

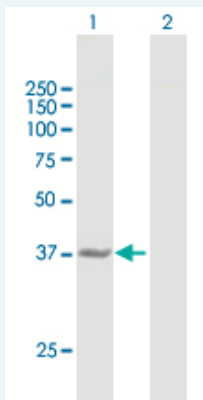
Western Blot (Tissue lysate)



CTH MaxPab polyclonal antibody. Western Blot analysis of CTH expression in human liver.

 [Protocol Download](#)

Western Blot (Transfected lysate)



Western Blot analysis of CTH expression in transfected 293T cell line ([H00001491-T01](#)) by CTH MaxPab polyclonal antibody.

Lane 1: CTH transfected lysate(44.55 KDa).
Lane 2: Non-transfected lysate.

 [Protocol Download](#)

Gene Information

Entrez GeneID: [1491](#)

GeneBank Accession#: [NM_001902.4](#)

Protein Accession#: [NP_001893.2](#)

Gene Name: CTH

Gene Alias: MGC9471

Gene Description: cystathionase (cystathionine gamma-lyase)

Omim ID: [219500](#), [607657](#)

Gene Ontology: [Hyperlink](#)

Gene Summary: This gene encodes a cytoplasmic enzyme in the trans-sulfuration pathway that converts cystathione derived from methionine into cysteine. Glutathione synthesis in the liver is dependent upon the availability of cysteine. Mutations in this gene cause cystathioninuria. Alternative splicing of this gene results in two transcript variants encoding different isoforms. [provided by RefSeq]

Other Designations: OTTHUMP00000010945,OTTHUMP00000010946,cystathionase,cystein e desulfhydrase,gamma-cystathionase,homoserine deaminase,homoserine dehydratase

Gene Pathway

[Cysteine and methionine metabolism](#) [Glycine, serine and threonine metabolism](#)
[Metabolic pathways](#) [Nitrogen metabolism](#) [Selenoamino acid metabolism](#)

Related Disease

[Atherosclerosis](#) [Atherosclerosis](#) [Calcinosis](#) [Cardiovascular Diseases](#) [Carotid Stenosis](#)
[Cleft Lip](#) [Cleft Palate](#) [Coronary Artery Disease](#) [Diabetes Mellitus, Type 2](#) [Edema](#)
[Genetic Predisposition to Disease](#) [Hypertension](#) [Infertility, Female](#) [Lung Neoplasms](#)
[Pulmonary Disease, Chronic Obstructive](#) [Spinal Dysraphism](#) [Urinary Bladder Neoplasms](#)
[Werner syndrome](#)

