



SZABO SCANDIC

Part of Europa Biosite

Produktinformation



Forschungsprodukte & Biochemikalien



Zellkultur & Verbrauchsmaterial



Diagnostik & molekulare Diagnostik



Laborgeräte & Service

Weitere Information auf den folgenden Seiten!
See the following pages for more information!



Lieferung & Zahlungsart

siehe unsere [Liefer- und Versandbedingungen](#)

Zuschläge

- Mindermengenzuschlag
- Trockeneiszuschlag
- Gefahrgutzuschlag
- Expressversand

SZABO-SCANDIC HandelsgmbH

Quellenstraße 110, A-1100 Wien

T. +43(0)1 489 3961-0

F. +43(0)1 489 3961-7

mail@szabo-scandic.com

www.szabo-scandic.com

[linkedin.com/company/szaboscandic](https://www.linkedin.com/company/szaboscandic) 

CTH monoclonal antibody (M03), clone S51

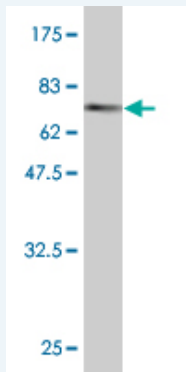
Catalog # : H00001491-M03

規格 : [100 ug]

List All

Specification

| | |
|---------------------------------|--|
| Product Description: | Mouse monoclonal antibody raised against a full length recombinant CTH. |
| Immunogen: | CTH (AAH15807, 1 a.a. ~ 405 a.a) full-length recombinant protein with GST tag. MW of the GST tag alone is 26 KDa. |
| Sequence: | MQEKDASSQGFLPHFQHFATQAIHVGQDPEQWTSRAVVPPISLSTTFK QGAPGQHSGFEYSRSGNPTRNCLEKAVAALDGAKYCLAFASGLAATVTI THLLKAGDQIICMDDVYGGTNRVYFRQVASEFGLKISFVDCSKIKLEAAIT PETKLWVETPTNPTQKVIDIEGCAHIVHKHGDILVDNTFMSPYFQRPLA LGADISMYSATKYMNGRSDVVMGLVSVNCESLHNRLRFLQNSLGAVPSP DCYLCNRGLKTLHVRMEKHFKNMVAQAFLSNPWVEKVIYPLPSHPQ HELVKRQCTGCTGMVTFYIKGTLQHAEIFLKNLKLFTLAESLGGFESLAE LPAIMTHASVLKNDRDVLGISDTLIRLSVGLLEDEEDLLEDLDQALKAHPP SGSHS |
| Host: | Mouse |
| Reactivity: | Human, Mouse |
| Isotype: | IgG1 Kappa |
| Quality Control Testing: | Antibody Reactive Against Recombinant Protein. |



Western Blot detection against Immunogen (70.07 kDa).

Storage Buffer: In 1x PBS, pH 7.4

Storage Instruction: Store at -20°C or lower. Aliquot to avoid repeated freezing and thawing.

MSDS: [Download](#)

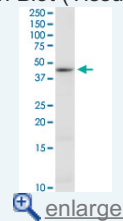
Datasheet: [Download](#)

Publication Reference

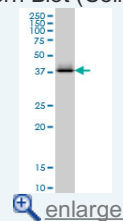
- [Impacts of CD44 knockdown in cancer cells on tumor and host metabolic systems revealed by quantitative imaging mass spectrometry.](#)
Ohmura M, Hishiki T, Yamamoto T, Nakanishi T, Kubo A, Tsuchihashi K, Tamada M, Toue S, Kabe Y, Saya H, Suematsu M. Nitric Oxide (2014), doi:10.1016/j.niox.2014.11.005

Application Image

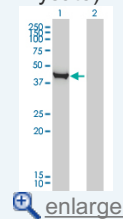
Western Blot (Tissue lysate)



Western Blot (Cell lysate)

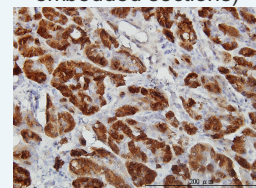


Western Blot (Transfected lysate)

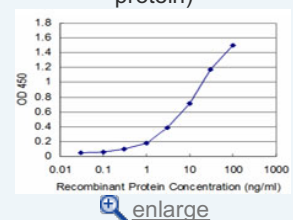


Western Blot (Recombinant protein)

Immunohistochemistry (Formalin/PFA-fixed paraffin-embedded sections)



Sandwich ELISA (Recombinant protein)

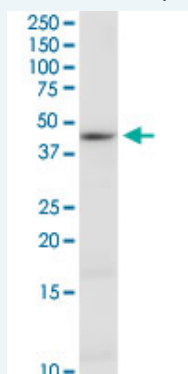


ELISA

2. cGMP-Dependent Protein Kinase Contributes to Hydrogen Sulfide-Stimulated Vasorelaxation.
Bucci M, Papapetropoulos A, Vellecco V, Zhou Z, Zaid A, Giannogonas P, Cantalupo A, Dhayade S, Karalis KP, Wang R, Feil R, Cirino G. PLoS One. 2012;7(12):e53319. doi: 10.1371/journal.pone.0053319. Epub 2012 Dec 28.
3. Hydrogen sulfide impairs glucose utilization and increases gluconeogenesis in hepatocytes.
Zhang L, Yang G, Untereiner A, Ju Y, Wu L, Wang R. Endocrinology. 2013 Jan;154(1):114-26. doi: 10.1210/en.2012-1658. Epub 2012 Nov 26.
4. An investigation of the mechanisms of hydrogen sulfide-induced vasorelaxation in rat middle cerebral arteries.
Streeter E, Hart J, Badoer E. Naunyn-Schmiedeberg's Arch Pharmacol. 2012 Jul 17.
5. Characterization of Hydrogen Sulfide and Its Synthases, Cystathionine β -Synthase and Cystathionine γ -Lyase, in Human Prostatic Tissue and Cells.
Guo H, Gai JW, Wang Y, Jin HF, Du JB, Jin J. Urology. 2012 Feb;79(2):483.e1-5.
6. Glucocorticoids suppress cystathionine gamma-lyase expression and H(2)S production in lipopolysaccharide-treated macrophages.
Zhu XY, Liu SJ, Liu YJ, Wang S, Ni X. Cell Mol Life Sci. 2010 Jan 10. [Epub ahead of print]
7. H2S contributes to the hepatic arterial buffer response and mediates vasorelaxation of the hepatic artery via activation of KATP channels.
Siebert N, Cantre D, Eipel C, Vollmar B. Am J Physiol Gastrointest Liver Physiol. 2008 Dec;295(6):G1266-73. Epub 2008 Oct 30.

Applications

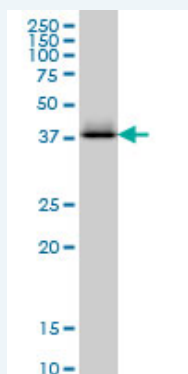
Western Blot (Tissue lysate)



CTH monoclonal antibody (M03), clone S51. Western Blot analysis of CTH expression in mouse kidney.

 [Protocol Download](#)

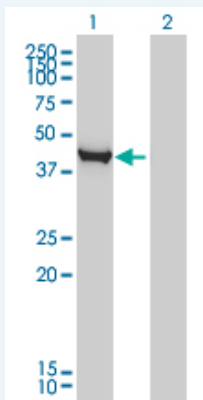
Western Blot (Cell lysate)



CTH monoclonal antibody (M03), clone S51 Western Blot analysis of CTH expression in K-562 (Cat # L009V1).

 [Protocol Download](#)

Western Blot (Transfected lysate)



Western Blot analysis of CTH expression in transfected 293T cell line by CTH monoclonal antibody (M03), clone S51.

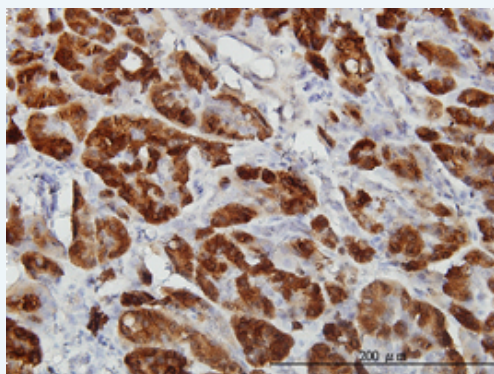
Lane 1: CTH transfected lysate(45 KDa).
Lane 2: Non-transfected lysate.

[Protocol Download](#)

Western Blot (Recombinant protein)

[Protocol Download](#)

Immunohistochemistry (Formalin/PFA-fixed paraffin-embedded sections)

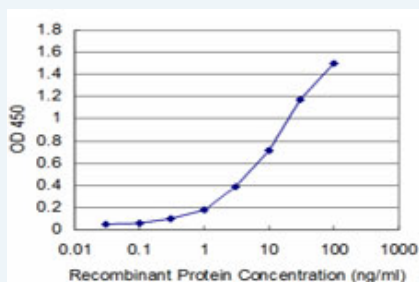


[enlarge this image](#)

Immunoperoxidase of monoclonal antibody to CTH on formalin-fixed paraffin-embedded human pancreas. [antibody concentration 3 ug/ml]

[Protocol Download](#)

Sandwich ELISA (Recombinant protein)



Detection limit for recombinant GST tagged CTH is approximately 1ng/ml as a capture antibody.

[Protocol Download](#)

ELISA

Gene Information

Entrez GeneID: [1491](#)

GeneBank [BC015807](#)
Accession#:

Protein [AAH15807](#)
Accession#:

Gene Name: CTH

Gene Alias: MGC9471

Gene Description: cystathionase (cystathionine gamma-lyase)

Omim ID: [219500](#), [607657](#)

Gene Ontology: [Hyperlink](#)

Gene Summary: This gene encodes a cytoplasmic enzyme in the trans-sulfuration pathway that converts cystathione derived from methionine into cysteine. Glutathione synthesis in the liver is dependent upon the availability of cysteine. Mutations in this gene cause cystathioninuria. Alternative splicing of this gene results in two transcript variants encoding different isoforms. [provided by RefSeq]

Other Designations: OTTHUMP00000010945, OTTHUMP00000010946, cystathionase, cysteine desulfhydrase, gamma-cystathionase, homoserine deaminase, homoserine dehydratase

Gene Pathway

[Cysteine and methionine metabolism](#) [Glycine, serine and threonine metabolism](#)
[Metabolic pathways](#) [Nitrogen metabolism](#) [Selenoamino acid metabolism](#)

Related Disease

[Atherosclerosis](#) [Atherosclerosis Calcinosi](#) [Cardiovascular Diseases](#) [Carotid Stenosis](#)
[Cleft Lip](#) [Cleft Palate](#) [Coronary Artery Disease](#) [Diabetes Mellitus, Type 2](#) [Edema](#)
[Genetic Predisposition to Disease](#) [Hypertension](#) [Infertility, Female](#) [Lung Neoplasms](#)
[Pulmonary Disease, Chronic Obstructive](#) [Spinal Dysraphism](#) [Urinary Bladder Neoplasms](#)
[Werner syndrome](#)

[服務條款](#) | [隱私權政策](#) | [著作及商標](#) | [網站地圖](#)

©2016 亞諾法生技股份有限公司 Abnova Corporation. 版權所有.