



SZABO SCANDIC

Part of Europa Biosite

Produktinformation



Forschungsprodukte & Biochemikalien



Zellkultur & Verbrauchsmaterial



Diagnostik & molekulare Diagnostik



Laborgeräte & Service

Weitere Information auf den folgenden Seiten!
See the following pages for more information!



Lieferung & Zahlungsart

siehe unsere [Liefer- und Versandbedingungen](#)

Zuschläge

- Mindermengenzuschlag
- Trockeneiszuschlag
- Gefahrgutzuschlag
- Expressversand

SZABO-SCANDIC HandelsgmbH

Quellenstraße 110, A-1100 Wien

T. +43(0)1 489 3961-0

F. +43(0)1 489 3961-7

mail@szabo-scandic.com

www.szabo-scandic.com

[linkedin.com/company/szaboscandic](https://www.linkedin.com/company/szaboscandic) 

CTLA4 (Human) Matched Antibody Pair

Catalog # : H00001493-AP41

規格 : [1 Set]

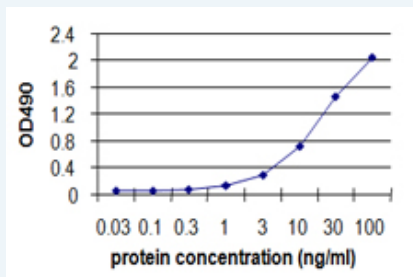
[List All](#)

Specification

Product Description: This antibody pair set comes with matched antibody pair to detect and quantify protein level of human CTLA4.

Reactivity: Human

Quality Control Testing: Standard curve using mammalian expressed recombinant protein as an analyte.



Sandwich ELISA detection sensitivity ranging from 0.1 ng/ml to 100 ng/ml.

Supplied Product: Antibody pair set content:
 1. Capture antibody: mouse monoclonal anti-CTLA4, IgG1 Kappa (100 ug)
 2. Detection antibody: biotinylated mouse monoclonal anti-CTLA4, IgG1 Kappa (50 ug)
 *Reagents are sufficient for at least 3-5 x 96 well plates using recommended protocols.

Storage Instruction: Store reagents of the antibody pair set at -20°C or lower. Please aliquot to avoid repeated freeze thaw cycle. Reagents should be returned to -20°C storage immediately after use.

MSDS:  [Download](#)

Applications

ELISA Pair (Recombinant protein)

 [Protocol Download](#)

Gene Information

Entrez GeneID: [1493](#)

Gene Name: CTLA4

Gene Alias: CD152, CELIAC3, CTLA-4, GSE, IDDM12

Gene Description: cytotoxic T-lymphocyte-associated protein 4

Omim ID: [123890](#), [140300](#), [275000](#), [601388](#), [609755](#)

Gene Ontology: [Hyperlink](#)

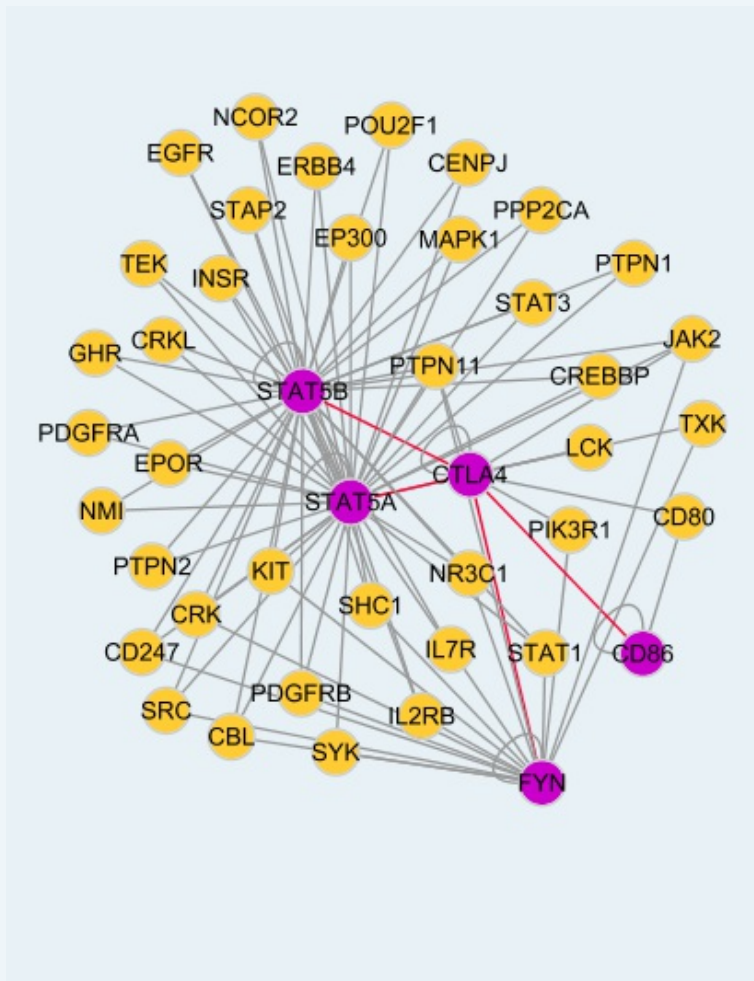
Application Image

ELISA Pair (Recombinant protein)

Gene Summary: This gene is a member of the immunoglobulin superfamily and encodes a protein which transmits an inhibitory signal to T cells. The protein contains a V domain, a transmembrane domain, and a cytoplasmic tail. Alternate transcriptional splice variants, encoding different isoforms, have been characterized. The membrane-bound isoform functions as a homodimer interconnected by a disulfide bond, while the soluble isoform functions as a monomer. Mutations in this gene have been associated with insulin-dependent diabetes mellitus, Graves disease, Hashimoto thyroiditis, celiac disease, systemic lupus erythematosus, thyroid-associated orbitopathy, and other autoimmune diseases. [provided by RefSeq]

Other Designations: OTTHUMP00000163781,cytotoxic T-lymphocyte-associated antigen 4,cytotoxic T-lymphocyte-associated serine esterase-4,ligand and transmembrane spliced cytotoxic T lymphocyte associated antigen 4

Interactome



Gene Pathway

[Autoimmune thyroid disease](#) [Cell adhesion molecules \(CAMs\)](#)
[T cell receptor signaling pathway](#)

Related Disease

[Abortion, Habitual](#) [Abortion, Spontaneous](#) [Abruptio Placentae](#)
[Acquired Immunodeficiency Syndrome](#) [Acute Disease](#) [Addison Disease](#) [Adenocarcinoma](#)
[Adenoma](#) [Alcoholism](#) [Alopecia Areata](#) [Anemia, Aplastic](#) [Anemia, Hemolytic](#), [Autoimmune](#)
[Arthritis, Juvenile Rheumatoid](#) [Arthritis, Psoriatic](#) [Arthritis, Rheumatoid](#) [Asthma](#) [Asthma](#)
[Atherosclerosis](#) [Autoimmune Diseases](#)

... see more

