



SZABO SCANDIC

Part of Europa Biosite

Produktinformation



Forschungsprodukte & Biochemikalien



Zellkultur & Verbrauchsmaterial



Diagnostik & molekulare Diagnostik



Laborgeräte & Service

Weitere Information auf den folgenden Seiten!
See the following pages for more information!



Lieferung & Zahlungsart

siehe unsere [Liefer- und Versandbedingungen](#)

Zuschläge

- Mindermengenzuschlag
- Trockeneiszuschlag
- Gefahrgutzuschlag
- Expressversand

SZABO-SCANDIC HandelsgmbH

Quellenstraße 110, A-1100 Wien

T. +43(0)1 489 3961-0

F. +43(0)1 489 3961-7

mail@szabo-scandic.com

www.szabo-scandic.com

[linkedin.com/company/szaboscandic](https://www.linkedin.com/company/szaboscandic) 

CTLA4 monoclonal antibody (M06), clone 2F1

Catalog # : H00001493-M06

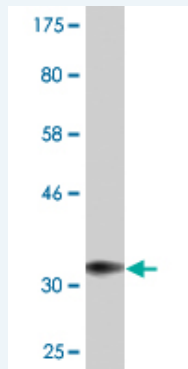
規格 : [100 ug]

[List All](#)

Specification

Product Description:	Mouse monoclonal antibody raised against a partial recombinant CTLA4.
Immunogen:	CTLA4 (NP_005205, 36 a.a. ~ 135 a.a) partial recombinant protein with GST tag. MW of the GST tag alone is 26 KDa.
Sequence:	KAMHVAQPAVVLASSRGIASFVCEYASPGKATEVRVTVLRQADSQVTEV CAATYMMGNELTFLDDSICTGTSSGNQVNLTIQGLRAMDTGLYICKVEL MY
Host:	Mouse
Reactivity:	Human
Isotype:	IgG2a Kappa

Quality Control Testing: Antibody Reactive Against Recombinant Protein.



Western Blot detection against Immunogen (36.74 KDa) .

Storage Buffer: In 1x PBS, pH 7.4

Storage Instruction: Store at -20°C or lower. Aliquot to avoid repeated freezing and thawing.

MSDS: [Download](#)

Datasheet: [Download](#)

Publication Reference

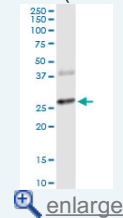
1. [Preclinical imaging of the co-stimulatory molecules CD80 and CD86 with indium-111-labeled belatacept in atherosclerosis.](#)
Meletta R, Müller Herde A, Dennler P, Fischer E, Schibli R, Krüger SD. *EJNMMI Res.* 2016 Jan 4. [Epub ahead of print]

Applications

Western Blot (Tissue lysate)

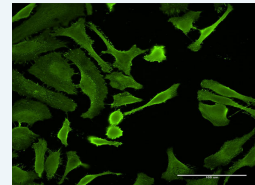
Application Image

Western Blot (Tissue lysate)

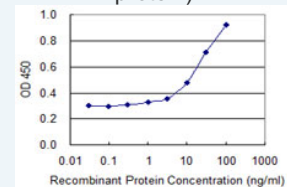


Western Blot (Recombinant protein)

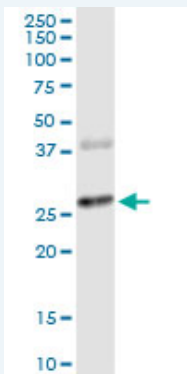
Immunofluorescence



Sandwich ELISA (Recombinant protein)



ELISA



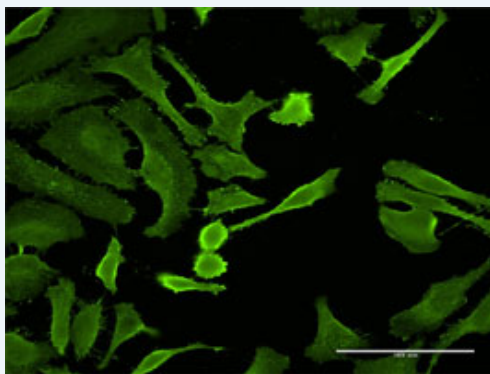
CTLA4 monoclonal antibody (M06), clone 2F1. Western Blot analysis of CTLA4 expression in human pancreas.

[Protocol Download](#)

Western Blot (Recombinant protein)

[Protocol Download](#)

Immunofluorescence

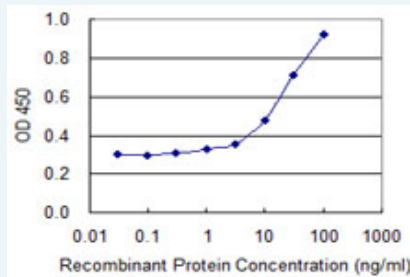


[enlarge this image](#)

Immunofluorescence of monoclonal antibody to CTLA4 on HeLa cell . [antibody concentration 15 ug/ml]

[Protocol Download](#)

Sandwich ELISA (Recombinant protein)



Detection limit for recombinant GST tagged CTLA4 is 0.3 ng/ml as a capture antibody.

[Protocol Download](#)

ELISA

Gene Information

Entrez GeneID: [1493](#)

GeneBank [NM_005214](#)

Accession#:

Protein [NP_005205](#)

Accession#:

Gene Name: CTLA4

Gene Alias: CD152,CELIAC3,CTLA-4,GSE,IDDM12

Gene cytotoxic T-lymphocyte-associated protein 4
Description:

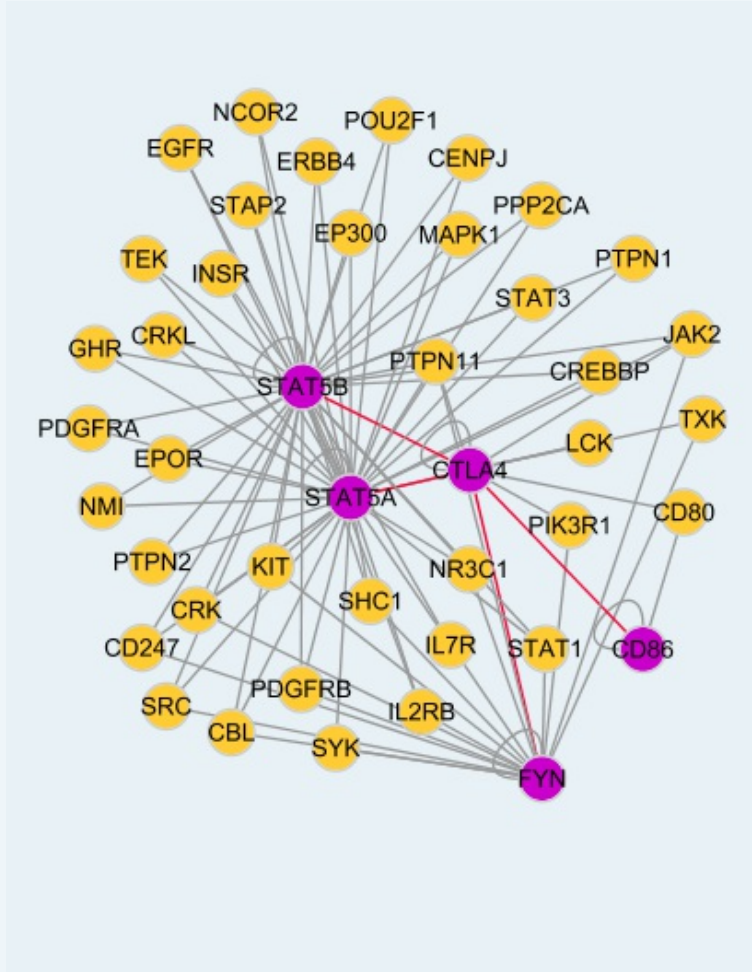
Omim ID: [123890](#), [140300](#), [275000](#), [601388](#), [609755](#)

Gene Ontology: [Hyperlink](#)

Gene Summary: This gene is a member of the immunoglobulin superfamily and encodes a protein which transmits an inhibitory signal to T cells. The protein contains a V domain, a transmembrane domain, and a cytoplasmic tail. Alternate transcriptional splice variants, encoding different isoforms, have been characterized. The membrane-bound isoform functions as a homodimer interconnected by a disulfide bond, while the soluble isoform functions as a monomer. Mutations in this gene have been associated with insulin-dependent diabetes mellitus, Graves disease, Hashimoto thyroiditis, celiac disease, systemic lupus erythematosus, thyroid-associated orbitopathy, and other autoimmune diseases. [provided by RefSeq]

Other Designations: OTTHUMP00000163781,cytotoxic T-lymphocyte-associated antigen 4,cytotoxic T-lymphocyte-associated serine esterase-4,ligand and transmembrane spliced cytotoxic T lymphocyte associated antigen 4

Interactome



Gene Pathway

[Autoimmune thyroid disease](#) [Cell adhesion molecules \(CAMs\)](#)
[T cell receptor signaling pathway](#)

Related Disease

[Abortion](#), [Habitual Abortion](#), [Spontaneous Abruption Placentae](#)
[Acquired Immunodeficiency Syndrome](#) [Acute Disease](#) [Addison Disease](#) [Adenocarcinoma](#)
[Adenoma](#) [Alcoholism](#) [Alopecia Areata](#) [Anemia](#), [Aplastic Anemia](#), [Hemolytic](#), [Autoimmune](#)
[Arthritis](#), [Juvenile Rheumatoid Arthritis](#), [Psoriatic Arthritis](#), [Rheumatoid](#) [Asthma](#) [Asthma](#)

