



# SZABO SCANDIC

Part of Europa Biosite

## Produktinformation



Forschungsprodukte & Biochemikalien



Zellkultur & Verbrauchsmaterial



Diagnostik & molekulare Diagnostik



Laborgeräte & Service

Weitere Information auf den folgenden Seiten!  
See the following pages for more information!



### Lieferung & Zahlungsart

siehe unsere [Liefer- und Versandbedingungen](#)

### Zuschläge

- Mindermengenzuschlag
- Trockeneiszuschlag
- Gefahrgutzuschlag
- Expressversand

### SZABO-SCANDIC HandelsgmbH

Quellenstraße 110, A-1100 Wien

T. +43(0)1 489 3961-0

F. +43(0)1 489 3961-7

[mail@szabo-scandic.com](mailto:mail@szabo-scandic.com)

[www.szabo-scandic.com](http://www.szabo-scandic.com)

[linkedin.com/company/szaboscandic](https://www.linkedin.com/company/szaboscandic) 

## CTLA4 monoclonal antibody (M08), clone 1F4

Catalog # : H00001493-M08

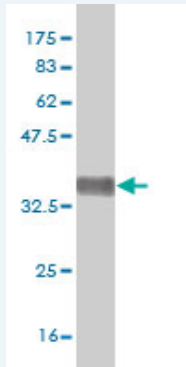
規格 : [ 50 ug ]

[List All](#)

### Specification

<b>Product Description:</b>	Mouse monoclonal antibody raised against a partial recombinant CTLA4.
<b>Immunogen:</b>	CTLA4 (NP_005205, 36 a.a. ~ 135 a.a) partial recombinant protein with GST tag. MW of the GST tag alone is 26 KDa.
<b>Sequence:</b>	KAMHVAQPAVVLLASSRGIASFVCEYASPGKATEVRVTVLRQADSQVTEV CAATYMMGNELTFLDDSICTGTSSGNQVNLTIQGLRAMDTGLYICKVEL MY
<b>Host:</b>	Mouse
<b>Reactivity:</b>	Human
<b>Isotype:</b>	IgG2a Kappa

**Quality Control Testing:** Antibody Reactive Against Recombinant Protein.



Western Blot detection against Immunogen (36.74 KDa) .

**Storage Buffer:** In 1x PBS, pH 7.4

**Storage Instruction:** Store at -20°C or lower. Aliquot to avoid repeated freezing and thawing.

**MSDS:** [Download](#)

**Datasheet:** [Download](#)

### Applications

**Western Blot (Recombinant protein)**

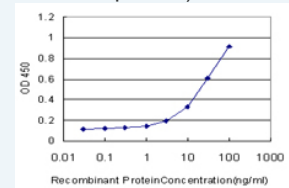
[Protocol Download](#)

**Sandwich ELISA (Recombinant protein)**

### Application Image

Western Blot (Recombinant protein)

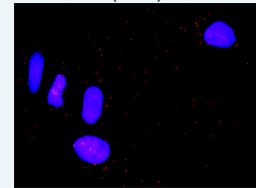
Sandwich ELISA (Recombinant protein)



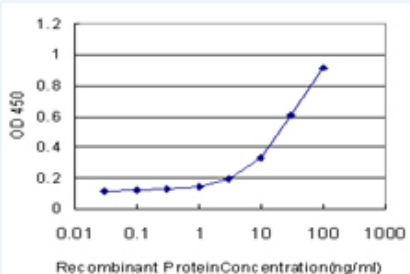
[enlarge](#)

ELISA


*In situ* Proximity Ligation Assay (Cell)



[enlarge](#)

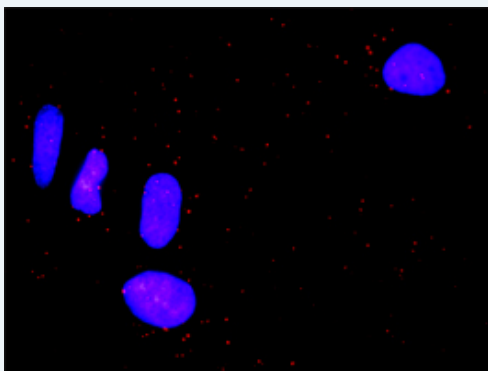


Detection limit for recombinant GST tagged CTLA4 is approximately 0.3ng/ml as a capture antibody.

 [Protocol Download](#)

## ELISA

### *In situ* Proximity Ligation Assay (Cell)



Proximity Ligation Analysis of protein-protein interactions between CD86 and CTLA4. HeLa cells were stained with anti-CD86 rabbit purified polyclonal 1:1200 and anti-CTLA4 mouse monoclonal antibody 1:50. Each red dot represents the detection of protein-protein interaction complex, and nuclei were counterstained with DAPI (blue).

## Gene Information

**Entrez GeneID:** [1493](#)

**GeneBank Accession#:** [NM\\_005214](#)

**Protein Accession#:** [NP\\_005205](#)

**Gene Name:** CTLA4

**Gene Alias:** CD152, CELIAC3, CTLA-4, GSE, IDDM12

**Gene Description:** cytotoxic T-lymphocyte-associated protein 4

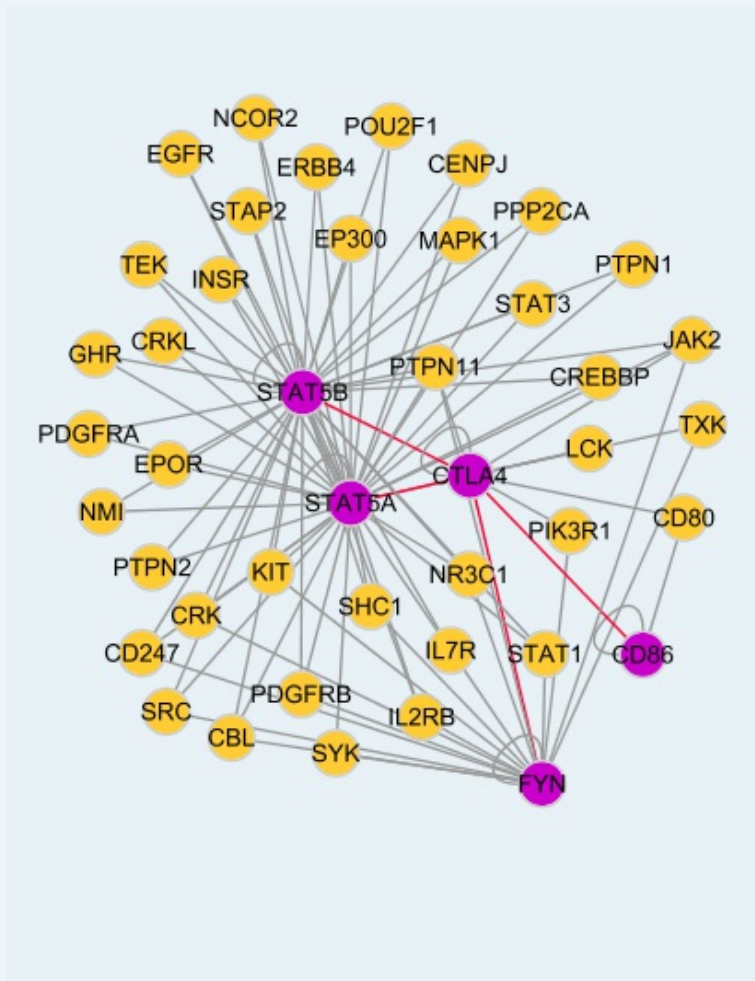
**Omim ID:** [123890](#), [140300](#), [275000](#), [601388](#), [609755](#)

**Gene Ontology:** [Hyperlink](#)

**Gene Summary:** This gene is a member of the immunoglobulin superfamily and encodes a protein which transmits an inhibitory signal to T cells. The protein contains a V domain, a transmembrane domain, and a cytoplasmic tail. Alternate transcriptional splice variants, encoding different isoforms, have been characterized. The membrane-bound isoform functions as a homodimer interconnected by a disulfide bond, while the soluble isoform functions as a monomer. Mutations in this gene have been associated with insulin-dependent diabetes mellitus, Graves disease, Hashimoto thyroiditis, celiac disease, systemic lupus erythematosus, thyroid-associated orbitopathy, and other autoimmune diseases. [provided by RefSeq]

**Other** OTTHUMP00000163781, cytotoxic T-lymphocyte-associated antigen  
**Designations:** 4, cytotoxic T-lymphocyte-associated serine esterase-4, ligand and transmembrane spliced cytotoxic T lymphocyte associated antigen 4

### Interactome



### Gene Pathway

[Autoimmune thyroid disease](#) [Cell adhesion molecules \(CAMs\)](#)  
[T cell receptor signaling pathway](#)

### Related Disease

[Abortion, Habitual](#) [Abortion, Spontaneous](#) [Abruptio Placentae](#)  
[Acquired Immunodeficiency Syndrome](#) [Acute Disease](#) [Addison Disease](#) [Adenocarcinoma](#)  
[Adenoma](#) [Alcoholism](#) [Alopecia Areata](#) [Anemia, Aplastic](#) [Anemia, Hemolytic](#), [Autoimmune](#)  
[Arthritis, Juvenile Rheumatoid](#) [Arthritis, Psoriatic](#) [Arthritis, Rheumatoid](#) [Asthma](#) [Asthma](#)  
[Atherosclerosis](#) [Autoimmune Diseases](#)

[... see more](#)

[服務條款](#) | [隱私權政策](#) | [著作及商標](#) | [網站地圖](#)

©2016 亞諾法生技股份有限公司 Abnova Corporation. 版權所有.