



SZABO SCANDIC

Part of Europa Biosite

Produktinformation



Forschungsprodukte & Biochemikalien



Zellkultur & Verbrauchsmaterial



Diagnostik & molekulare Diagnostik



Laborgeräte & Service

Weitere Information auf den folgenden Seiten!
See the following pages for more information!



Lieferung & Zahlungsart

siehe unsere [Liefer- und Versandbedingungen](#)

Zuschläge

- Mindermengenzuschlag
- Trockeneiszuschlag
- Gefahrgutzuschlag
- Expressversand

SZABO-SCANDIC HandelsgmbH

Quellenstraße 110, A-1100 Wien

T. +43(0)1 489 3961-0

F. +43(0)1 489 3961-7

mail@szabo-scandic.com

www.szabo-scandic.com

[linkedin.com/company/szaboscandic](https://www.linkedin.com/company/szaboscandic) 

CTLA4 monoclonal antibody (M37), clone 5G6

Catalog # : H00001493-M37

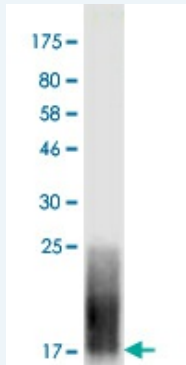
規格 : [100 ug]

List All

Specification

Product Description:	Mouse monoclonal antibody raised against a partial recombinant CTLA4.
Immunogen:	CTLA4 (AAH74842.1, 37 a.a. ~ 161 a.a) partial recombinant protein with GST tag.
Sequence:	AMHVAQPAVWLASSRGIASFVCEYASPGKATEVRVTVLRQADSQVTEVC AATYMMGNELTFLDSSICTGTSSGNQVNLTIQGLRAMDTGLYICKVELMY PPYYLIGINGTQIYVIDPEPCPDSD
Host:	Mouse
Reactivity:	Human
Isotype:	IgG1 Kappa

Quality Control Testing: Antibody Reactive Against Recombinant Protein.



Western Blot detection against Immunogen (15.95 KDa) .

Storage Buffer: In 1x PBS, pH 7.4

Storage Instruction: Store at -20°C or lower. Aliquot to avoid repeated freezing and thawing.

Datasheet: [Download](#)

Applications

Western Blot (Recombinant protein)

[Protocol Download](#)

ELISA

Gene Information

Entrez GeneID: [1493](#)

GeneBank Accession#: [BC074842](#)

Application Image

Western Blot (Recombinant protein)

ELISA

Protein [AAH74842.1](#)

Accession#:

Gene Name: CTLA4

Gene Alias: CD152,CELIAC3,CTLA-4,GSE,IDDM12

Gene Description: cytotoxic T-lymphocyte-associated protein 4

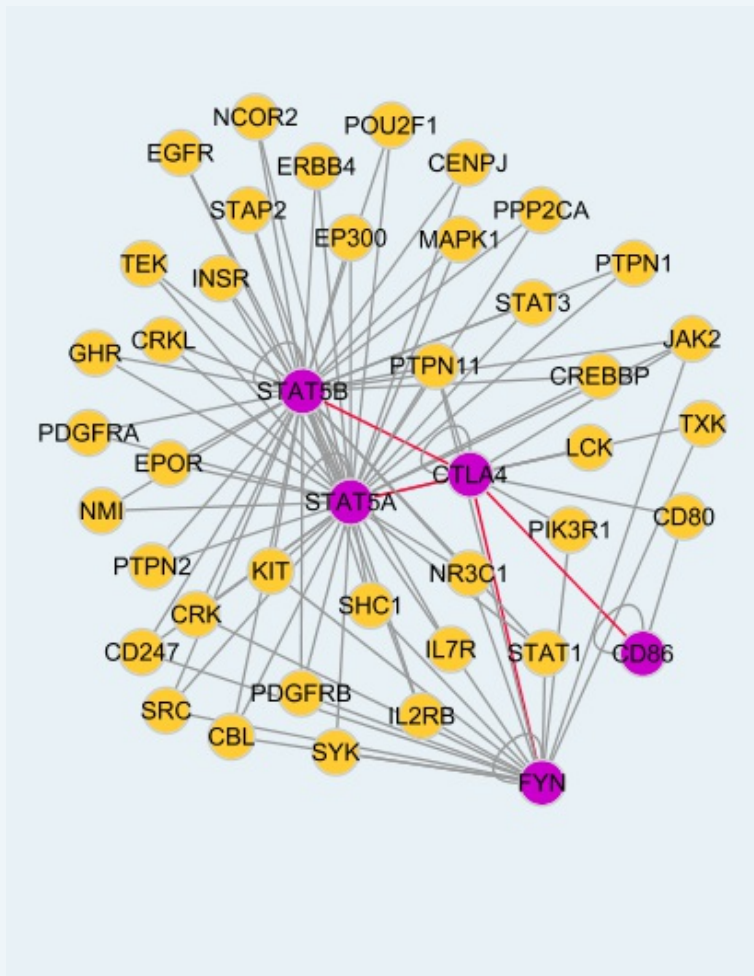
Omim ID: [123890](#), [140300](#), [275000](#), [601388](#), [609755](#)

Gene Ontology: [Hyperlink](#)

Gene Summary: This gene is a member of the immunoglobulin superfamily and encodes a protein which transmits an inhibitory signal to T cells. The protein contains a V domain, a transmembrane domain, and a cytoplasmic tail. Alternate transcriptional splice variants, encoding different isoforms, have been characterized. The membrane-bound isoform functions as a homodimer interconnected by a disulfide bond, while the soluble isoform functions as a monomer. Mutations in this gene have been associated with insulin-dependent diabetes mellitus, Graves disease, Hashimoto thyroiditis, celiac disease, systemic lupus erythematosus, thyroid-associated orbitopathy, and other autoimmune diseases. [provided by RefSeq]

Other Designations: OTTHUMP00000163781,cytotoxic T-lymphocyte-associated antigen 4,cytotoxic T-lymphocyte-associated serine esterase-4,ligand and transmembrane spliced cytotoxic T lymphocyte associated antigen 4

Interactome



Gene Pathway

[Autoimmune thyroid disease](#) [Cell adhesion molecules \(CAMs\)](#)
[T cell receptor signaling pathway](#)

Related Disease

[Abortion, Habitual](#) [Abortion, Spontaneous](#) [Abruptio Placentae](#)
[Acquired Immunodeficiency Syndrome](#) [Acute Disease](#) [Addison Disease](#) [Adenocarcinoma](#)
[Adenoma](#) [Alcoholism](#) [Alopecia Areata](#) [Anemia, Aplastic](#) [Anemia, Hemolytic](#) [Autoimmune](#)
[Arthritis, Juvenile Rheumatoid](#) [Arthritis, Psoriatic](#) [Arthritis, Rheumatoid](#) [Asthma](#) [Asthma](#)
[Atherosclerosis](#) [Autoimmune Diseases](#)

... see more

[服務條款](#) | [隱私權政策](#) | [著作及商標](#) | [網站地圖](#)

©2016 亞諾法生技股份有限公司 Abnova Corporation. 版權所有.