



SZABO SCANDIC

Part of Europa Biosite

Produktinformation



Forschungsprodukte & Biochemikalien



Zellkultur & Verbrauchsmaterial



Diagnostik & molekulare Diagnostik



Laborgeräte & Service

Weitere Information auf den folgenden Seiten!
See the following pages for more information!



Lieferung & Zahlungsart

siehe unsere [Liefer- und Versandbedingungen](#)

Zuschläge

- Mindermengenzuschlag
- Trockeneiszuschlag
- Gefahrgutzuschlag
- Expressversand

SZABO-SCANDIC HandelsgmbH

Quellenstraße 110, A-1100 Wien

T. +43(0)1 489 3961-0

F. +43(0)1 489 3961-7

mail@szabo-scandic.com

www.szabo-scandic.com

[linkedin.com/company/szaboscandic](https://www.linkedin.com/company/szaboscandic) 

CTNNA1 monoclonal antibody (M03), clone 4G6

Catalog # : H00001495-M03

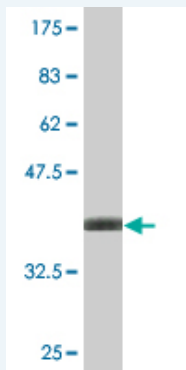
規格 : [100 ug]

[List All](#)

Specification

Product Description:	Mouse monoclonal antibody raised against a partial recombinant CTNNA1.
Immunogen:	CTNNA1 (NP_001894, 152 a.a. ~ 250 a.a) partial recombinant protein with GST tag. MW of the GST tag alone is 26 KDa.
Sequence:	VQLKVVEDGILKLRNAGNEQDLGIQYKALKPEVDKLNIMAAKRQQLKDV GHRDQMAAARGILQKNVPILY TASQAQLQHPDVAAYKANRDLYKQLQQ
Host:	Mouse
Reactivity:	Human
Isotype:	IgG1 Kappa

Quality Control Testing: Antibody Reactive Against Recombinant Protein.



Western Blot detection against Immunogen (36.63 KDa) .

Storage Buffer: In 1x PBS, pH 7.4

Storage Instruction: Store at -20°C or lower. Aliquot to avoid repeated freezing and thawing.

MSDS: [Download](#)

Datasheet: [Download](#)

Applications

Western Blot (Recombinant protein)

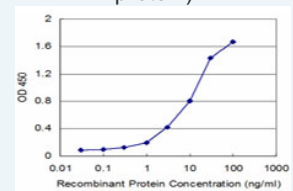
[Protocol Download](#)

Sandwich ELISA (Recombinant protein)

Application Image

Western Blot (Recombinant protein)

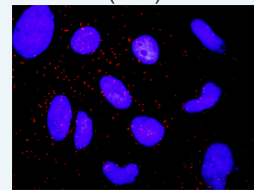
Sandwich ELISA (Recombinant protein)



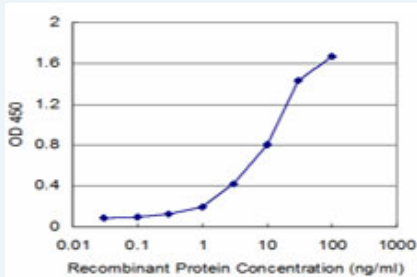
[enlarge](#)

ELISA

In situ Proximity Ligation Assay (Cell)



[enlarge](#)

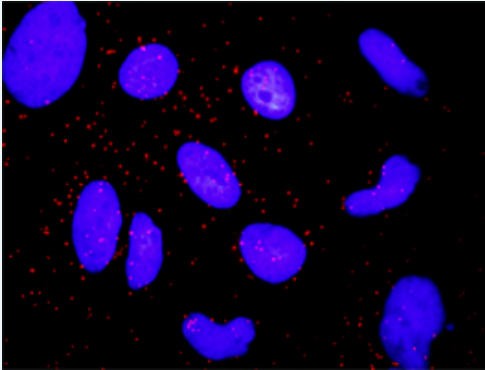


Detection limit for recombinant GST tagged CTNNA1 is approximately 0.3ng/ml as a capture antibody.

 [Protocol Download](#)

ELISA

In situ Proximity Ligation Assay (Cell)



Proximity Ligation Analysis of protein-protein interactions between ARRB2 and CTNNA1. HeLa cells were stained with anti-ARRB2 rabbit purified polyclonal 1:1200 and anti-CTNNA1 mouse monoclonal antibody 1:50. Each red dot represents the detection of protein-protein interaction complex, and nuclei were counterstained with DAPI (blue).

Gene Information

Entrez GeneID: [1495](#)

GeneBank Accession#: [NM_001903](#)

Protein Accession#: [NP_001894](#)

Gene Name: CTNNA1

Gene Alias: CAP102,FLJ36832

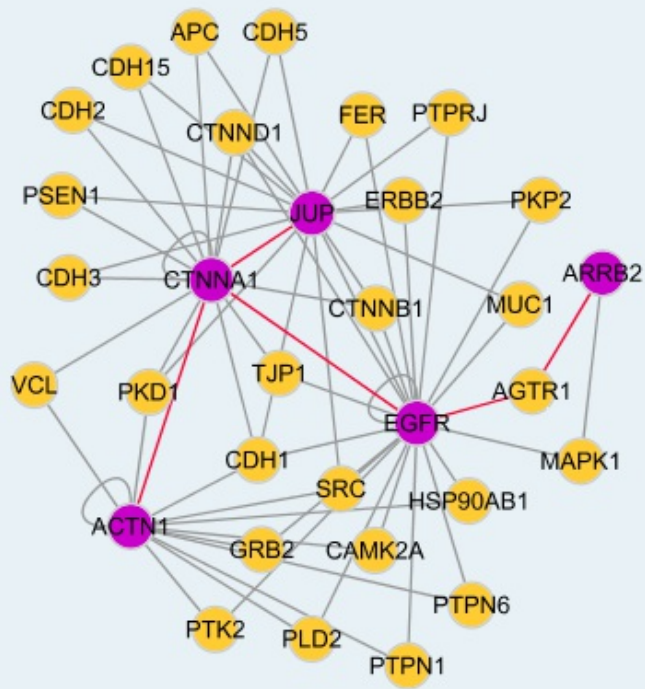
Gene Description: catenin (cadherin-associated protein), alpha 1, 102kDa

Omim ID: [116805](#)

Gene Ontology: [Hyperlink](#)

Other Designations: alpha-E-catenin,alpha-catenin,alphaE-catenin,cadherin-associated protein,102kDa,catenin (cadherin-associated protein), alpha 1 (102kD),catenin, alpha 1

Interactome



Gene Pathway

[Adherens junction](#) [Arrhythmogenic right ventricular cardiomyopathy \(ARVC\)](#)
[Endometrial cancer](#) [Leukocyte transendothelial migration](#) [Pathways in cancer](#)
[Tight junction](#)

Related Disease

[Cardiovascular Diseases](#) [Diabetes Mellitus, Type 2](#) [Edema](#)

[服務條款](#) | [隱私權政策](#) | [著作及商標](#) | [網站地圖](#)

©2016 亞諾法生技股份有限公司 Abnova Corporation. 版權所有.